

8+180 Δ
0°53' Rt.

2+771 P.C.
3+150 P.T.
90° C.L. Δ=88°05'

2+819 P.C.
3+949 P.T.
80° C.R. Δ=90°24'

N 49° 18' E.
0+000
Beginning of Project

Helix Vansycle Market Road No. 10.

N.P.R.R. Main Line
Side Track

N 49° 18' E.
0+00.0
Beginning of Project

Elev.

Station

Ware House

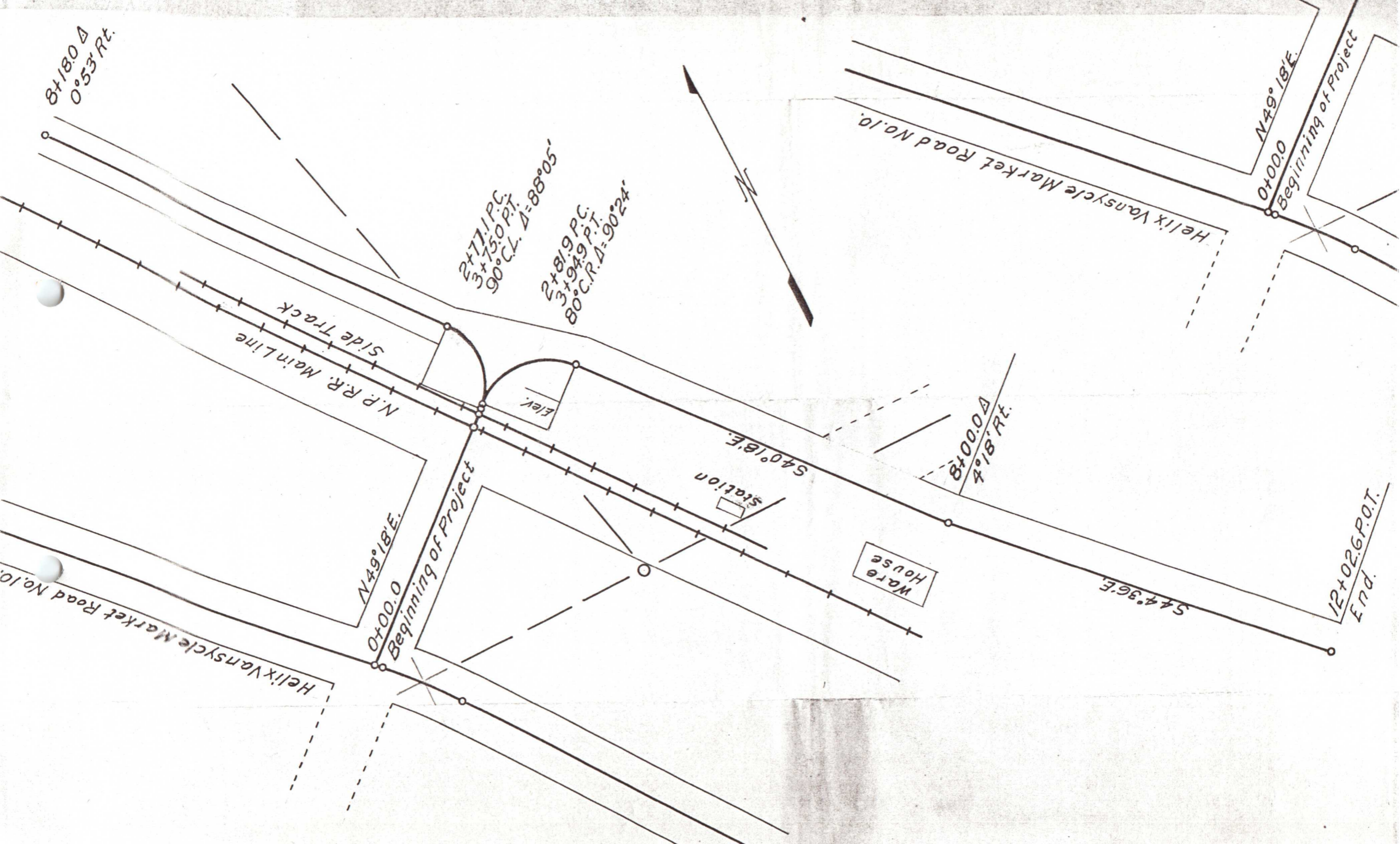
8+00.0 Δ
4°18' Rt.

S 44° 36' E.

12+02.6 P.O.T.
End.

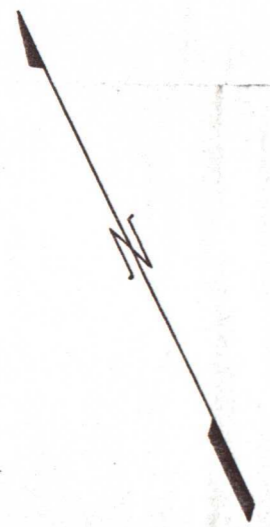
N

Helix Vansycle Market Road No. 10.



2+77.1 PC
3+75.0 PT.
90° C.L. Δ=88°05'

2+81.9 PC
3+94.9 PT.
80° C.R. Δ=90°24'



Helix Vansycle Market Road No. 10.

0+00.0
Beginning of Project

Main Line N.P.R.R.
Side Track
N 38° 47' W.

2+77.1 PC
3+75.0 PT.
90° C.L. Δ=88°05'

2+81.9 PC
3+94.9 PT.
80° C.R. Δ=90°24'

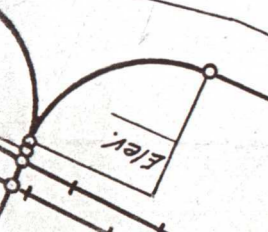
S 40° 18' E.

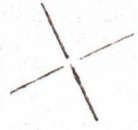
Station

Ware House

8+18.0
0° 53' R

2.04
RT.





50° C.R.
Δ: 116° 40'
19+09.4 P.C. 21+47.2 P.T.

N37° 54' W.

8+18.0 Δ
0° 53' Rt.

2A+

EL' W.



50° C.R.
Δ = 116°40'
94 P.C.
21+47.2 P.T.

N78°46'E
24+27.3 P.C.

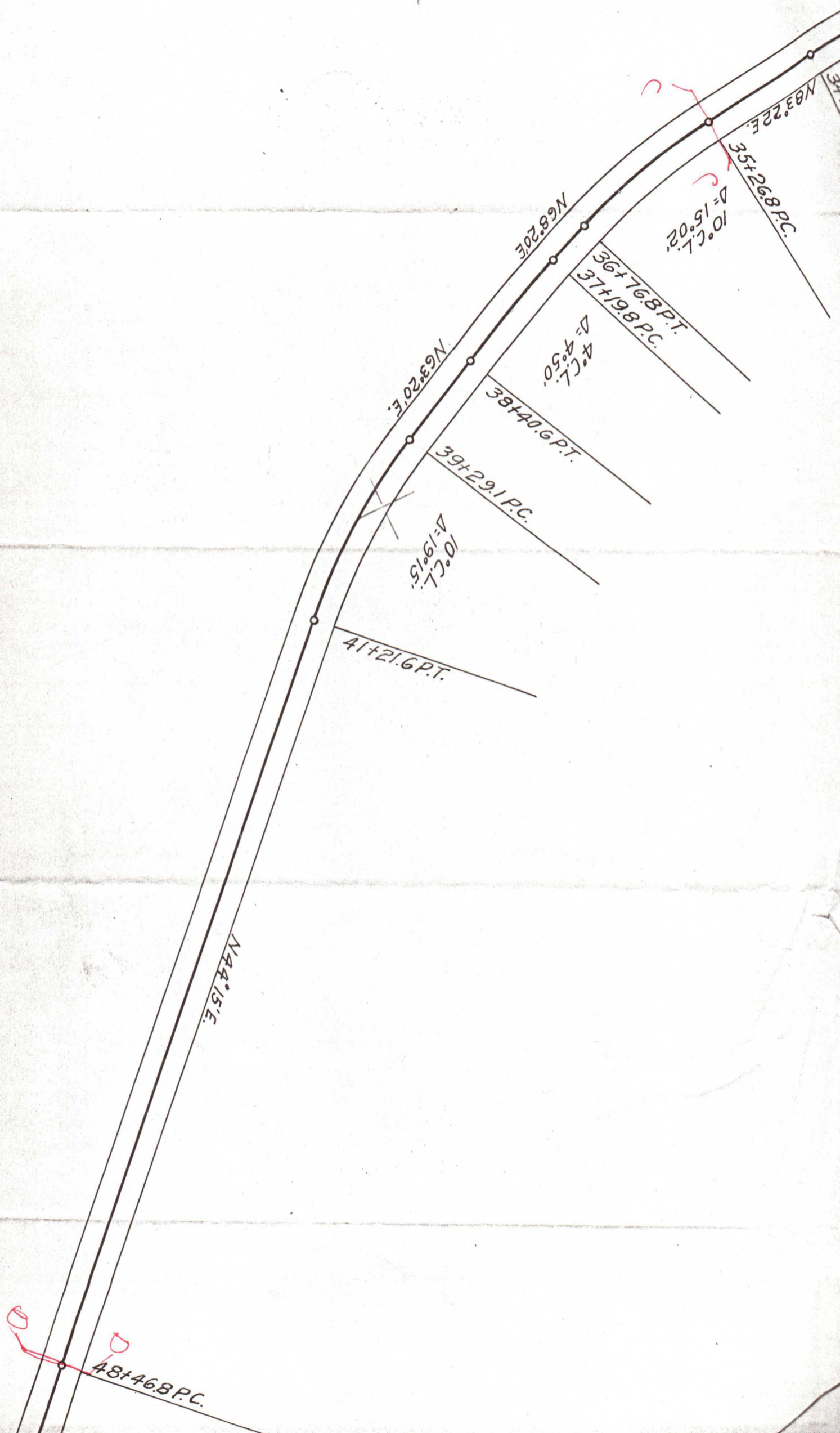
4° C.R.
D = 7°52'

27+84.0 P.O.T.

N86°38'E

37' C
N83°22'E
37' C





10° C.L.
Δ=15°02'

4° C.L.
Δ=4°50'

10° C.L.
Δ=19°15'

35+26.8 P.C.
N83°22'E

36+76.8 P.T.
37+19.8 P.C.

38+40.6 P.T.

39+29.1 P.C.

41+21.6 P.T.

N44°15'E

48+46.8 P.C.

N68°20'E

N63°20'E

UMATILLA COUNTY OREGON
COUNTY ENGINEERS OFFICE
RAYMOND ROAD
CONSTRUCTED LINE
SCALE 1IN=100FT. JUNE 1929

