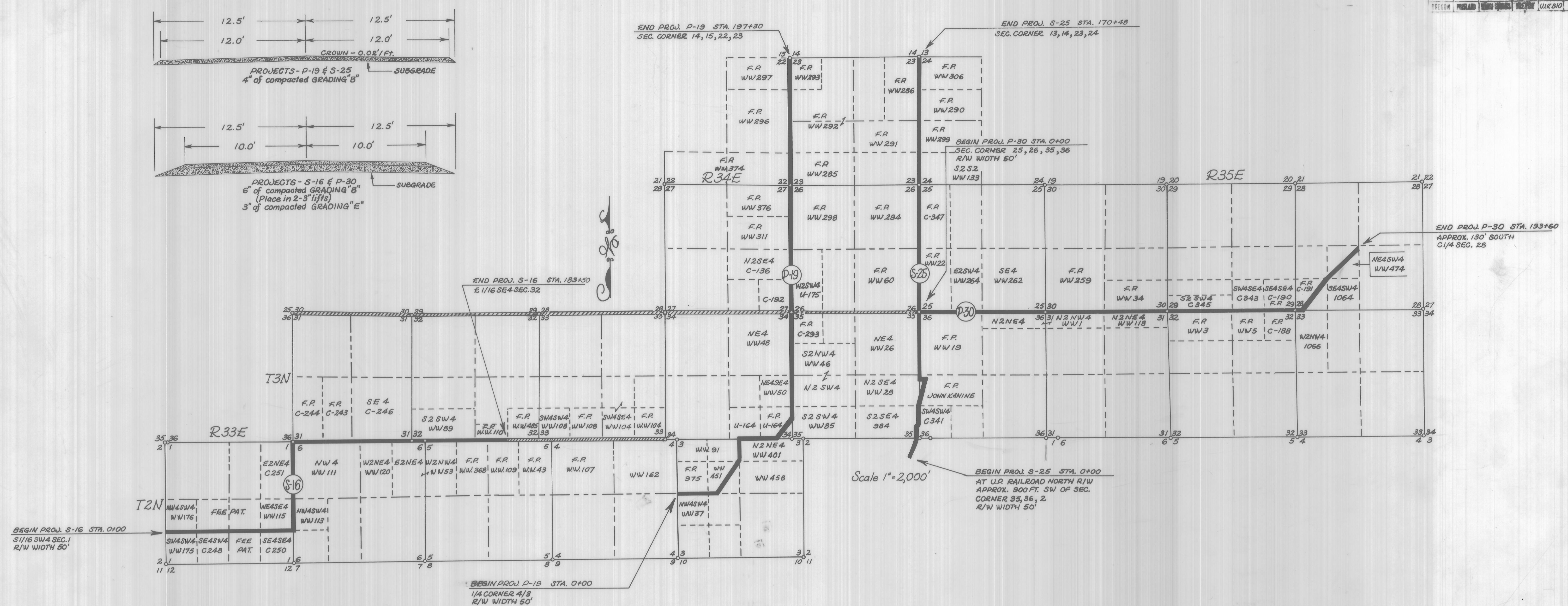


PROJECT	SHEET NO.	TOTAL SHEETS
UMATILLA COUNTY	1	1



APPROVAL OF MAP

This map composed of one sheet, of which this is sheet one, is approved pursuant to the provisions of the Act of February 5, 1948 (62 Stat. 17; 26 U.S.C. 323-328) and Departmental Regulations 25 CFR 161, as amended, and pursuant to the stipulations of the agreement dated December 16, 1963 between the United States as represented by the Bureau of Indian Affairs and the County as represented by the Board of County Commissioners subject to any prior, valid, existing rights or adverse claims.

Date Approved: October 27, 1965

Alma L. Fredrick
 Superintendent, Warm Springs Indian Agency
 Warm Springs, Oregon.

ENGINEERS AFFIDAVIT

STATE OF OREGON
 COUNTY OF UMATILLA

Lee M. Travis, being first duly sworn, states that he is the Supervising Highway Engineer for the Umatilla Indian Agency; that the survey of the roads described on this map was made by him or under his direction; that the said survey is 14.11 miles in length and is accurately represented on this map.

Date October 27 1965

Lee M. Travis
 Supervising Highway Engineer

Subscribed and sworn to Before Me This 27th Day of October 1965.

Phyllis B. Shaw
 Notary Public

My Commission Expires October 6, 1968

CERTIFICATION OF UMATILLA COUNTY

I, D. R. Cook hereby certify that I am the Judge of the County Court of Umatilla County, Oregon; that I am satisfied as to the accuracy of the survey of the roads and of the accuracy of this map on which the survey is represented; that Umatilla County accepts the right of way for the road represented on this map pursuant to agreement with the Bureau of Indian Affairs dated December 16, 1963

Dated 11-1 1965

D. R. Cook
 Judge County Court
Carl B. Stanton
 Commissioner
Walter A. Holt
 Commissioner
Jarvis M. Boer
 County Clerk

Attested:

Box 111