

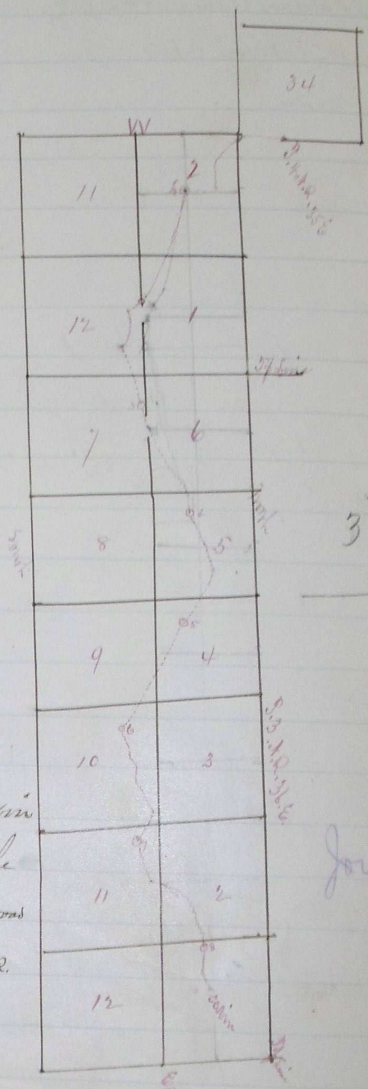
Rd #74
 Report. Plat & field notes of Co. Road
 from Maston to Port Stephens Cabin on the
 Mountain between N. St. & Pine Creek

Course	Rods	Miles	
S. 40 E	48	✓	
S. 35 E	24	✓	
S. 64 E	20	✓	
S. 40 E	80	✓	
East	60	✓	To Lane
South	80	✓	through Lane
S. 67 E	8	✓	1
S. 67 E	132	✓	
S. 79 E	114	✓	
S. 69 E	74	✓	2
S. 43 E	60	✓	
S. 89 E	80	✓	
S. 61 E	20	✓	To J Ray
N. 71 E	160	✓	3
N. 73 E	60	✓	
S. 88 E	20	✓	
N. 61 E	40	✓	
N. 54 E	154	✓	
N. 81 E	46	✓	4
N. 64 E	100	✓	
N. 66 E	50	✓	
S. 86 E	36	✓	
S. 57 E	50	✓	
S. 65 E	86	✓	5
S. 63 E	44	✓	
S. 71 E	56	✓	
S. 65 E	128		To Sea level on N. S. E. Cor Sec 4. S. 37. R. 36. E.
S. 53 E	92		6
N. 79 E	64		
N. 60 E	56		
N. 83 E	76		
N. 53 E	46		
S. 84 E	38		
S. 58 E	40		7

over

marks

	Rods	View
N. 68 E	40	
N. 78 E	40	
N. 48 E	22	
N. 37 E	4	
N. 9 W	26	
N. 35 E	14	
N. 15 W	8	
N. 37 E	34	
N. 47 E	22	
N. 74 E	34	
S. 87 E	28	
N. 58 E	26	
N. 65 E	22 -	8
N. 65 E	8	
S. 67 E	16	
S. 75 E	48	
N. 62 E	46	
N. 11 E	12 -	8 + 130 Road to Shehans Cabin



I certify the foregoing to be a correct copy of the field notes of the Survey as made by me of a County road from 80 rods north of S.E. Corner of S. 34, S. 4, N.R. 35 E. to Pat Shehans Cabin accompanying which is a plat of the same. Witness my hand Aug 2, 1879.

J. H. Riley Co. Surveyor
By J. H. Sharon Dep.

To the Hon County Court for the County of Umatilla State of Oregon.

We the undersigned viewers appointed at the July Term of said Court to view out ^{the} report on the location of a County road commencing 80 rods north of S.E. Corner of Sec 34, S. 4, N.R. 35 E. thence to Pat Shehans Cabin. report as follows.

We met at the town of Weston on the 26th day of August 1879, as per order ^{of} proceed in Company with J. H. Sharon Dep. County Surveyor ^{and} the necessary assistants to view out Survey ^{and} mark off said road as by laws required. ^{and} find there to be a good ^{and} practicable route ^{and} much needed by the public ^{and} would recommend the location as a County road in accordance with the prayer of the Petitioner the plat ^{and} field notes are hereto annexed

located ^{and} granted Sept 4th 1879
Filed Sept 8th 1879. Received Sept 13th 1879

Witness
 { Alfred Stages
 { Jesse J. Wain
 { W. A. Dozier

Journal B. 421