

UMATILLA COUNTY ROAD DEPARTMENT
 ATHENA-LAMARR GULCH MKT. No. 57
 TOWNSHIP 4 N. RANGE 35 E. W.M.
 STA 0+00 To 192+33.8
 ALSO (A) 21+19.2 To 28+00
 AND (B) 117+26.7 To 135+79.9
 TOTAL DISTANCE OF 4.09 MILES

SCALE 1"=400'
 SEPTEMBER 10, 1931
 SURVEYED AND DRAFTED BY D. TEMPLE

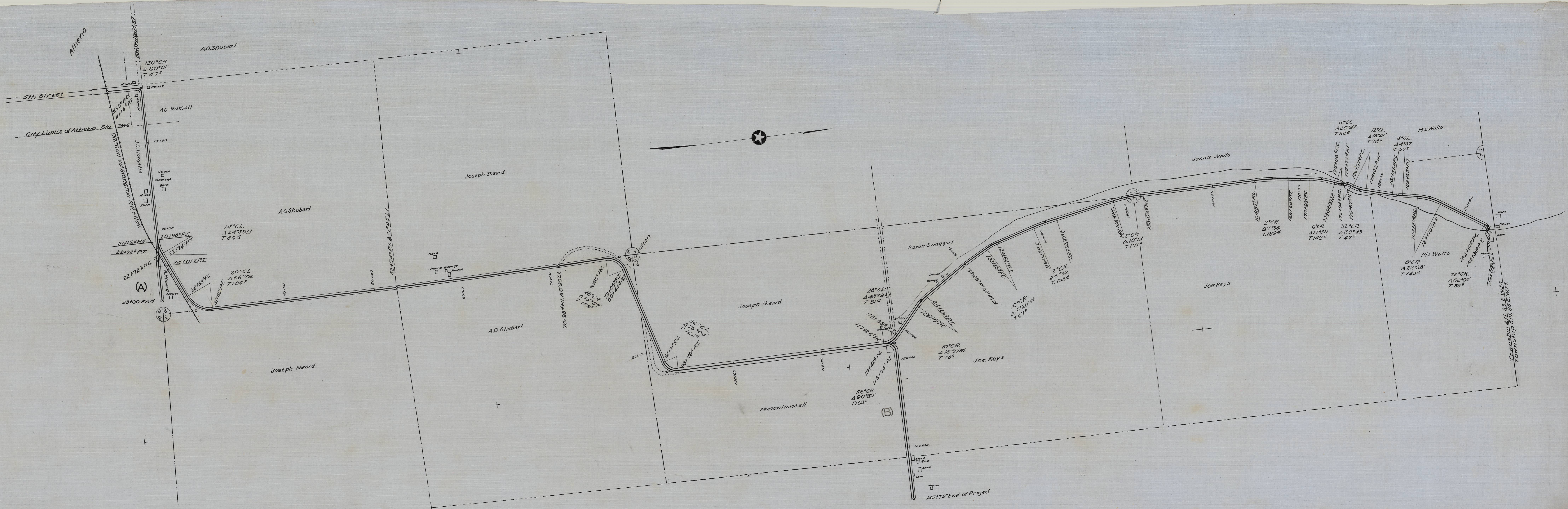
APPROVED BY
J. Schamper
 COUNTY JUDGE
J. O'Hales
 COMMISSIONER
R. C. Deany
 COMMISSIONER

OREGON STATE MARKET ROAD ENGINEER
W. E. Criger
 COUNTY ROADMASTER



APPROVED
 Oregon State Highway Commission
 By *J. Scott*
 State Market Road Engineer
 Date Oct. 15, 1931

Filed Sept 11th 1931.
R. T. Brown
 County Clerk



HW 32

BOX 12

125