

Rd #27

Report Survey and Plat of Road from Bridge in Weston  
 Point 1/4 mile S of N.E. cor. Sec. 36 T.4 N. R. 36 E

Rd #27

Weston Oct 24<sup>th</sup> 1872

To the Hon Co Court Multnomah Co Oregon

The the viewers appointed by said court at the October term to view out & survey a road from the Bridge in Weston to a point 1/4 mile South of N.E. corner Sec 36 T.4 N. R. 36 E proceeded on 21<sup>st</sup> Oct to view out & survey the same as per said order and would beg leave to recommend the location of the same as a best road it being a public necessity the plat and field notes of Surveyor accompanies this report

Viewers } Wm Russell  
 Jackson Nelson  
 J M Cienallen

Field Notes

Course	Dist Chains, miles	Remarks	Course	Dist Chains, miles	Remarks
N 54 <sup>o</sup> E	88.00	To N of Hales	S 54 <sup>o</sup> E	9	
N 72 <sup>o</sup> W	8.	To Hales corner	S 71 <sup>o</sup> E	6	Corner Road
East	19.50	To Bridge	N 80 <sup>o</sup> E	30	Heavy Timber
S 34 <sup>o</sup> E	14	Up mountain	N 4 <sup>o</sup> E	27	
S 39 <sup>o</sup> E	10	Gradual	East	9	6
S 65 <sup>o</sup> E	39	up	East	66	
S 57 <sup>o</sup> E	6	grade	S 20 <sup>o</sup> E	6	
N 74 <sup>o</sup> E	11		S 0 <sup>o</sup> E	8	
S 0 <sup>o</sup> E	14		S 6 <sup>o</sup> W	10	7
S 0 <sup>o</sup> E	04		S 28 <sup>o</sup> E	17	
S 66 <sup>o</sup> E	5		S 30 <sup>o</sup> E	20	
S 83 <sup>o</sup> E	8		S 30 <sup>o</sup> E	30	
S 72 <sup>o</sup> E	3	3	East	8	8
S 72 <sup>o</sup> E	20	To pine	East	40	
S 35 <sup>o</sup> E	20	timber	S 36 <sup>o</sup> E	10	
S 70 <sup>o</sup> E	19	To Brasfield's	East	30	9
S 70 <sup>o</sup> E	21	To	S 70 <sup>o</sup> E	80	10
S 70 <sup>o</sup> E	6		S 75 <sup>o</sup> E	17	To 1/4 mile South of N.E. corner Sec 36 T.4 N. R. 36 E
East	63				
S 37 <sup>o</sup> E	11	5			

I hereby certify that the foregoing is a correct copy of the field notes as taken by me of the road from Weston to the Blue Mountains 1/4 mile South of N.E. corner Sec 36 T.4 N. R. 36 E Surveyed Oct 22<sup>nd</sup> & 23<sup>rd</sup> 1872

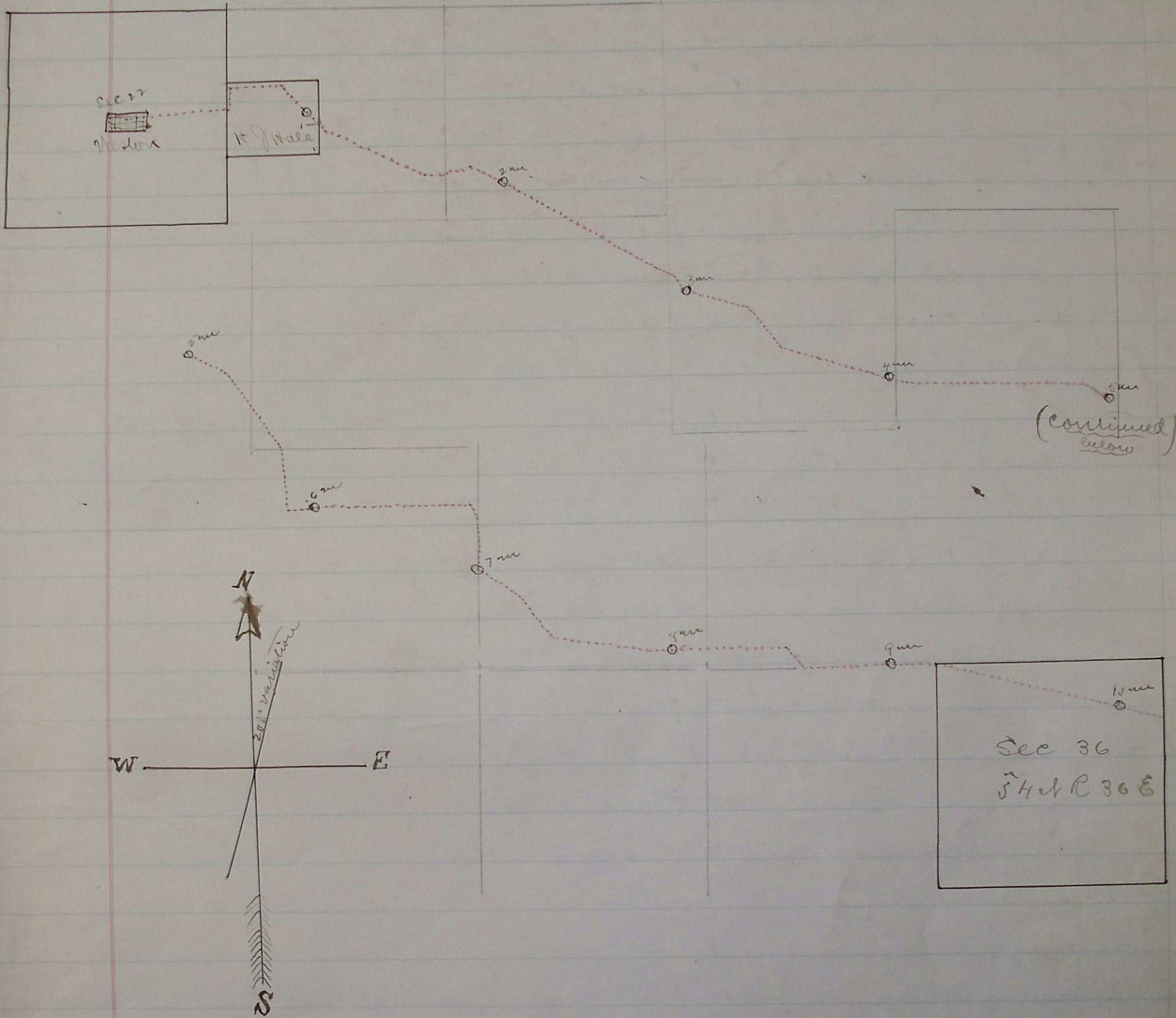
H. J. Hale }  
 J. A. Hartman } Chainman

J. H. Sharon  
 Co Surveyor  
 Multnomah Co Oregon

Plot of Road from Weston

Rd #37

to  
Blue Mts.



I certify that the above is a correct plot  
 of the road from Weston to Blue Mountains  
 as surveyed by October 22<sup>nd</sup> A.D. 1872 as per  
 order of the County Court of Washtenaw County  
 Oregon at October Term 1872 accompanying  
 this are the field notes of the same

E. N. J. Scale  
 Chairman  
 J. A. Hartman

J. N. Sharon  
 County Surveyor  
 Washtenaw Co. Ore

Road granted and located Jan. 7<sup>th</sup> 1873  
 See Co. Court Journal "B" page 258