

22°E.

Beginning of Project 2+00

2+78.3 P.C.

14° C.L.
Δ=93°31'

5

9+46.3 P.T.

5.55°09'

10+58.6 P.O.T. = EQUATION
10+70.0 P.C.

26° C.L.
Δ=111°59'

10

15+127 P.T.

16+91.3 P.C.

56°50'E.

14° C.L.
Δ=68°14'

20

21+78.7 P.T.

25

N.54°56'E.

ction 35
ion 2

ION

127 P.T. 151

S. 56° 50' E.

16191.3 P.C.

14° C.L.
Δ = 68° 14'

2178.7 P.T.

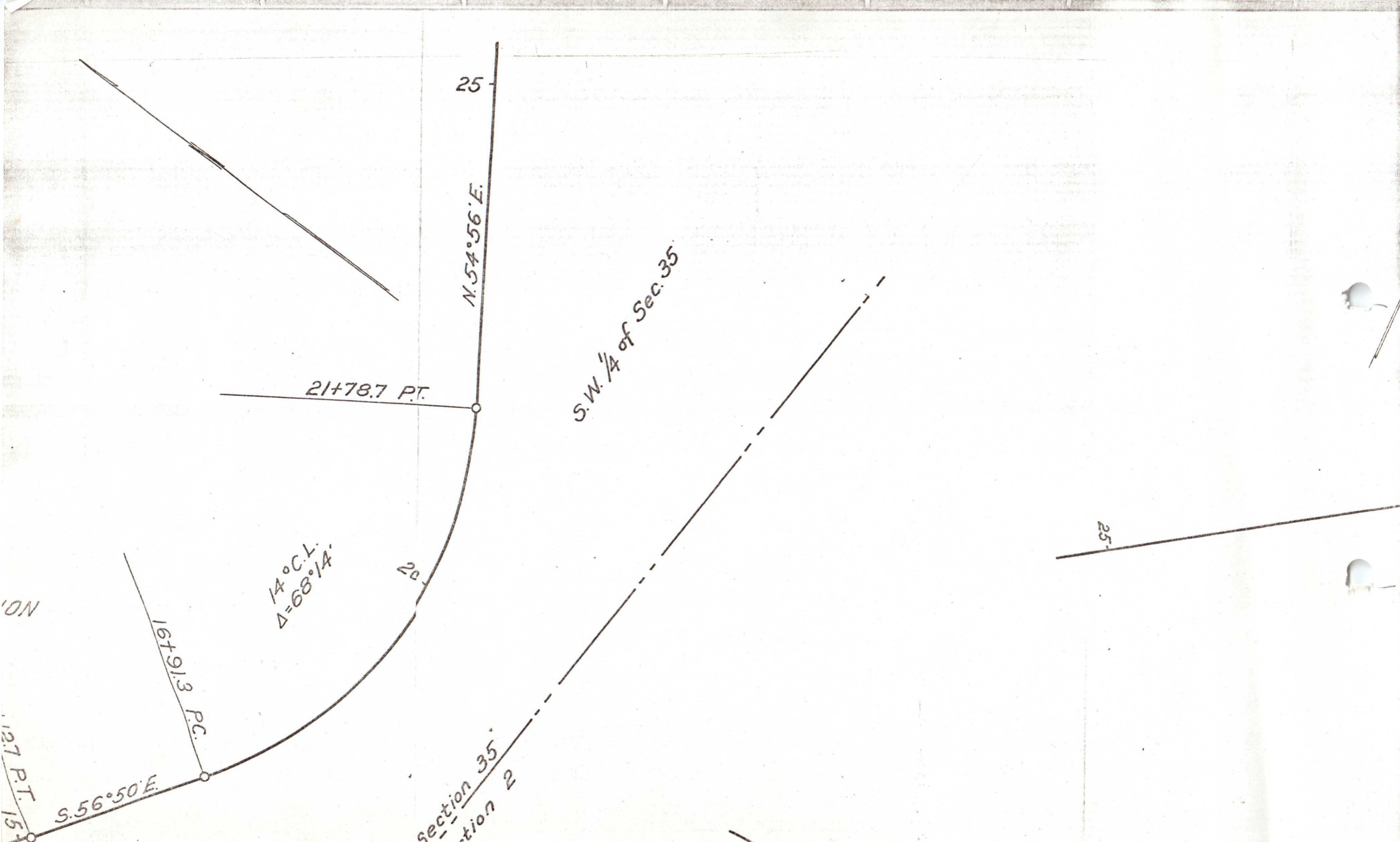
25

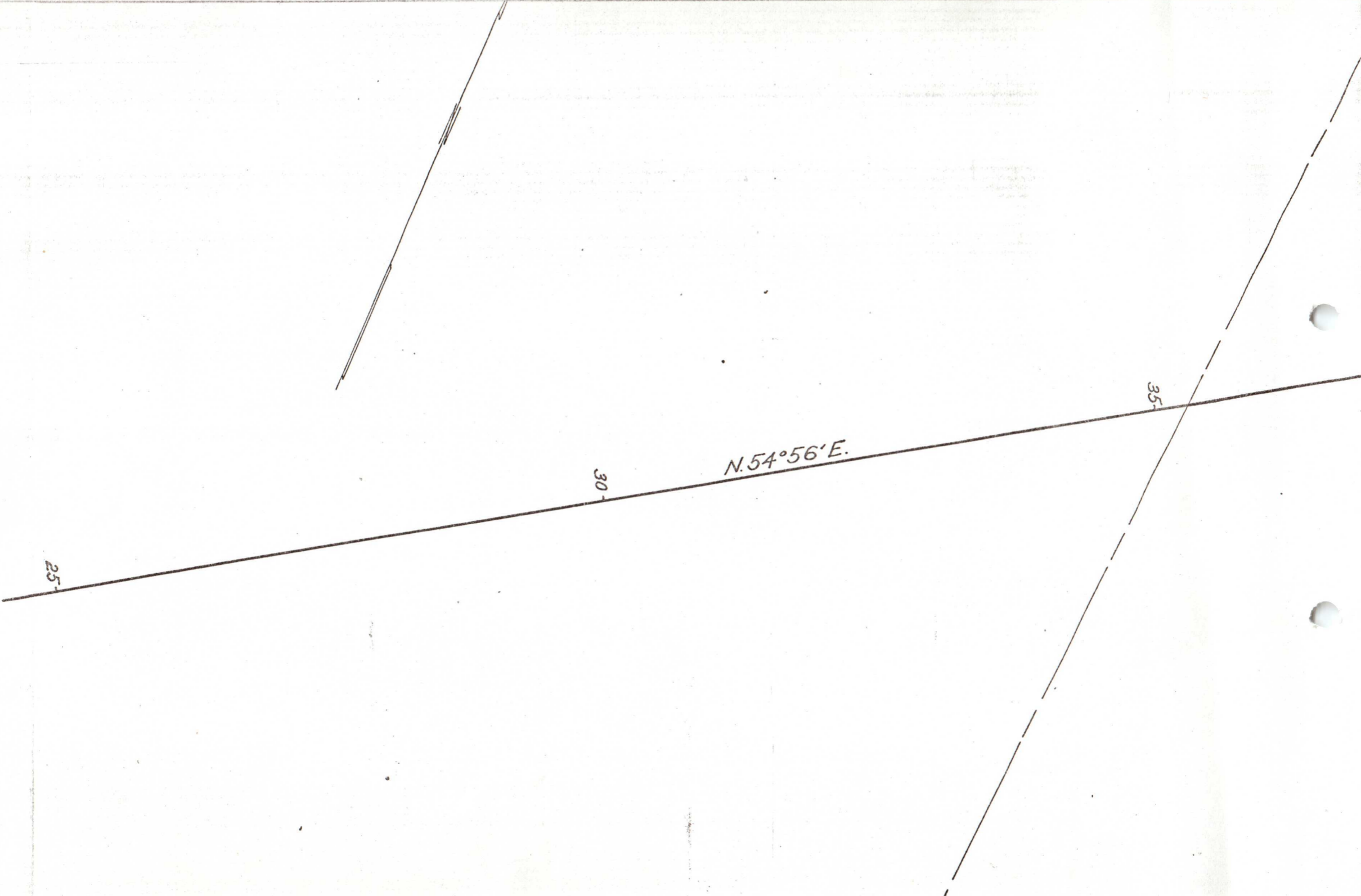
N. 54° 56' E.

S.W. 1/4 of Sec. 35

section 35
tion 2

25-





N.54°56'E.

25

30

35

°56'E.

35-

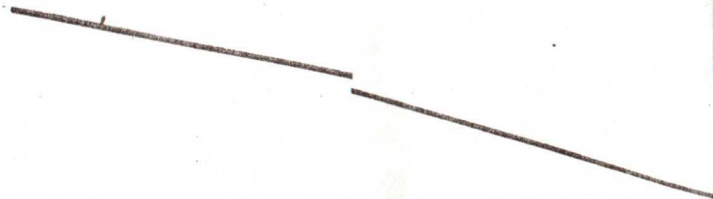
40-

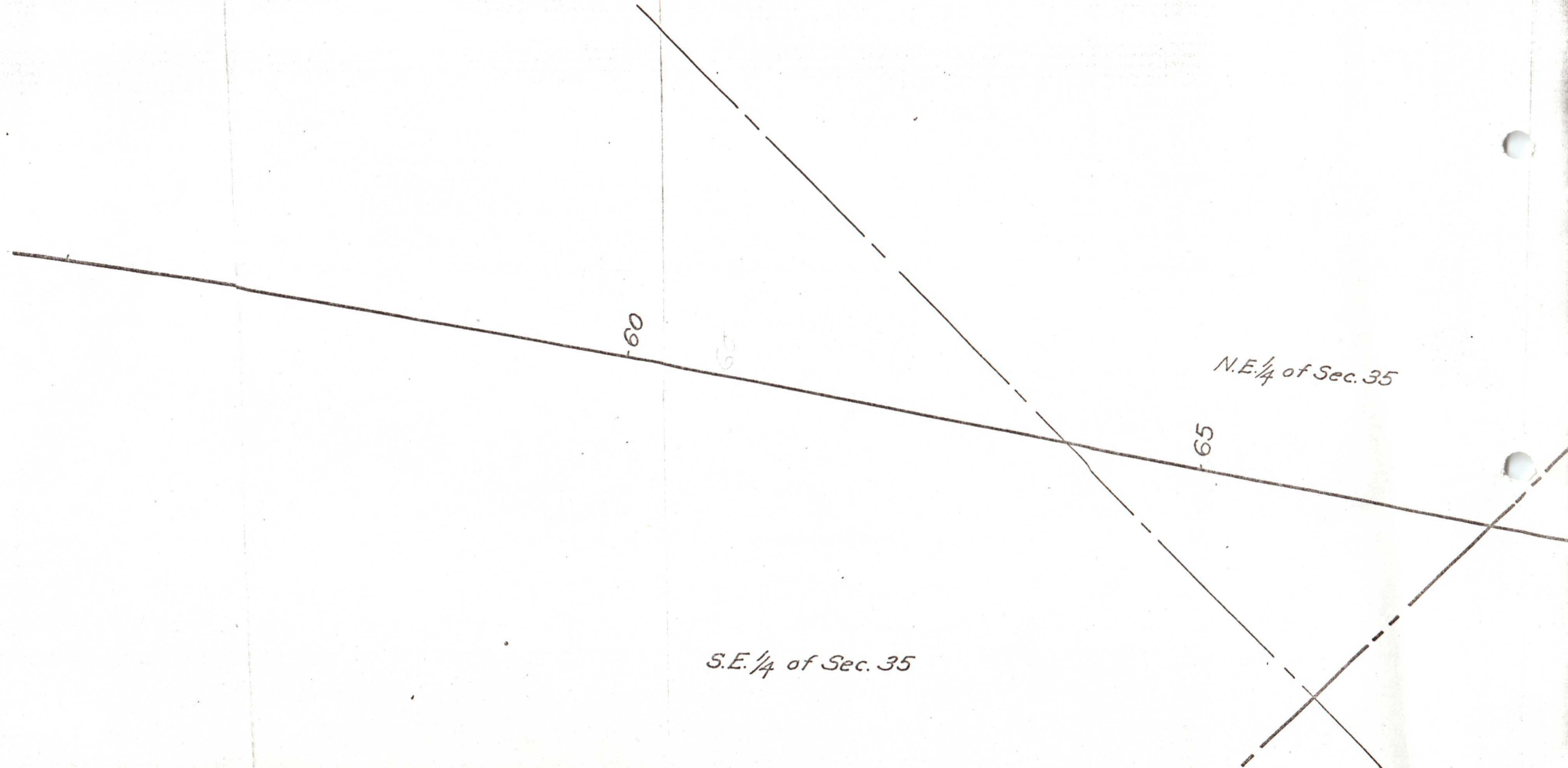
45-

S.E. $\frac{1}{4}$ of Sec. 35

45-

50-





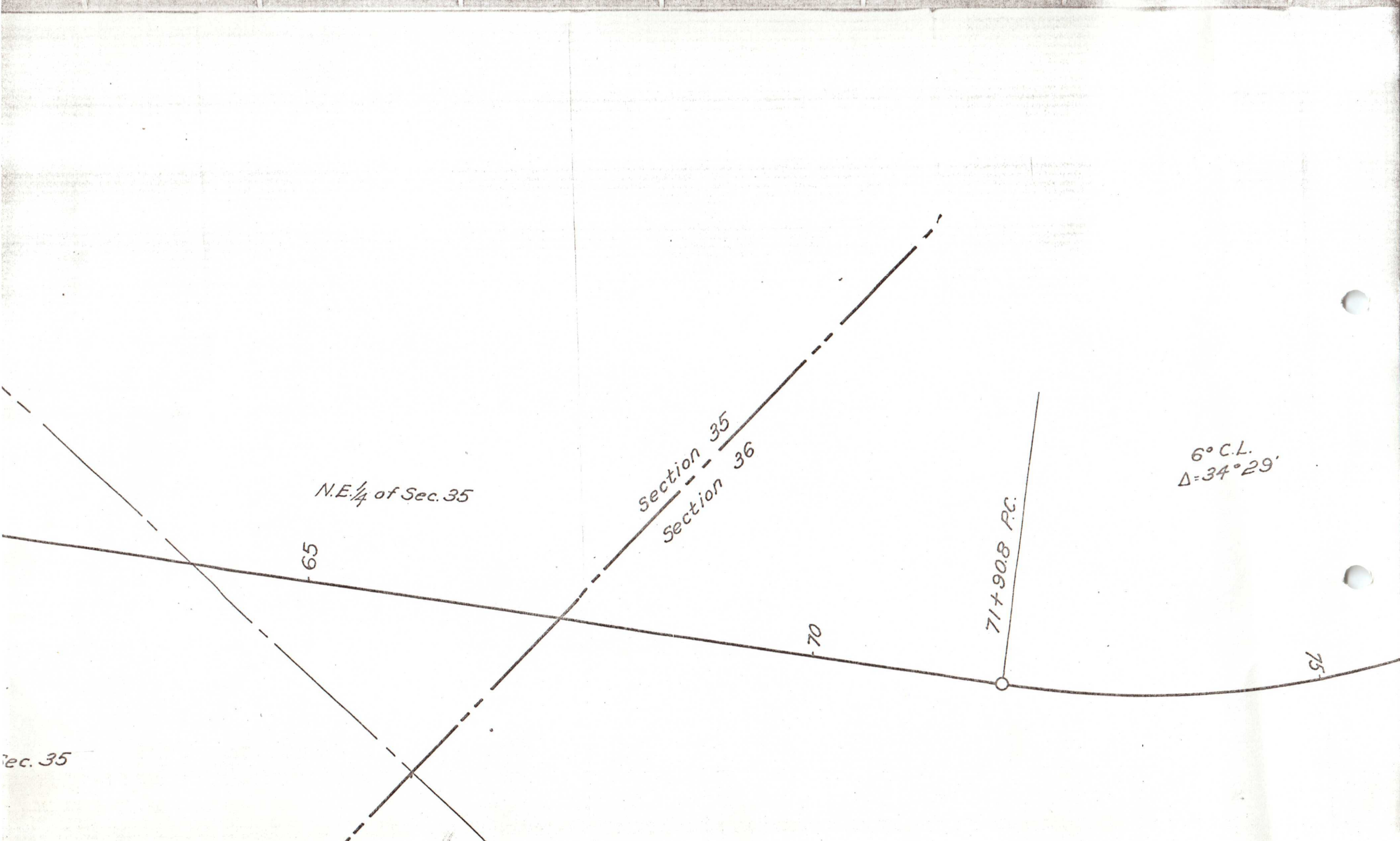
60

65

65

N.E. 1/4 of Sec. 35

S.E. 1/4 of Sec. 35



N.E. 1/4 of Sec. 35

Section 35
Section 36

6° C.L.
Δ=34° 29'

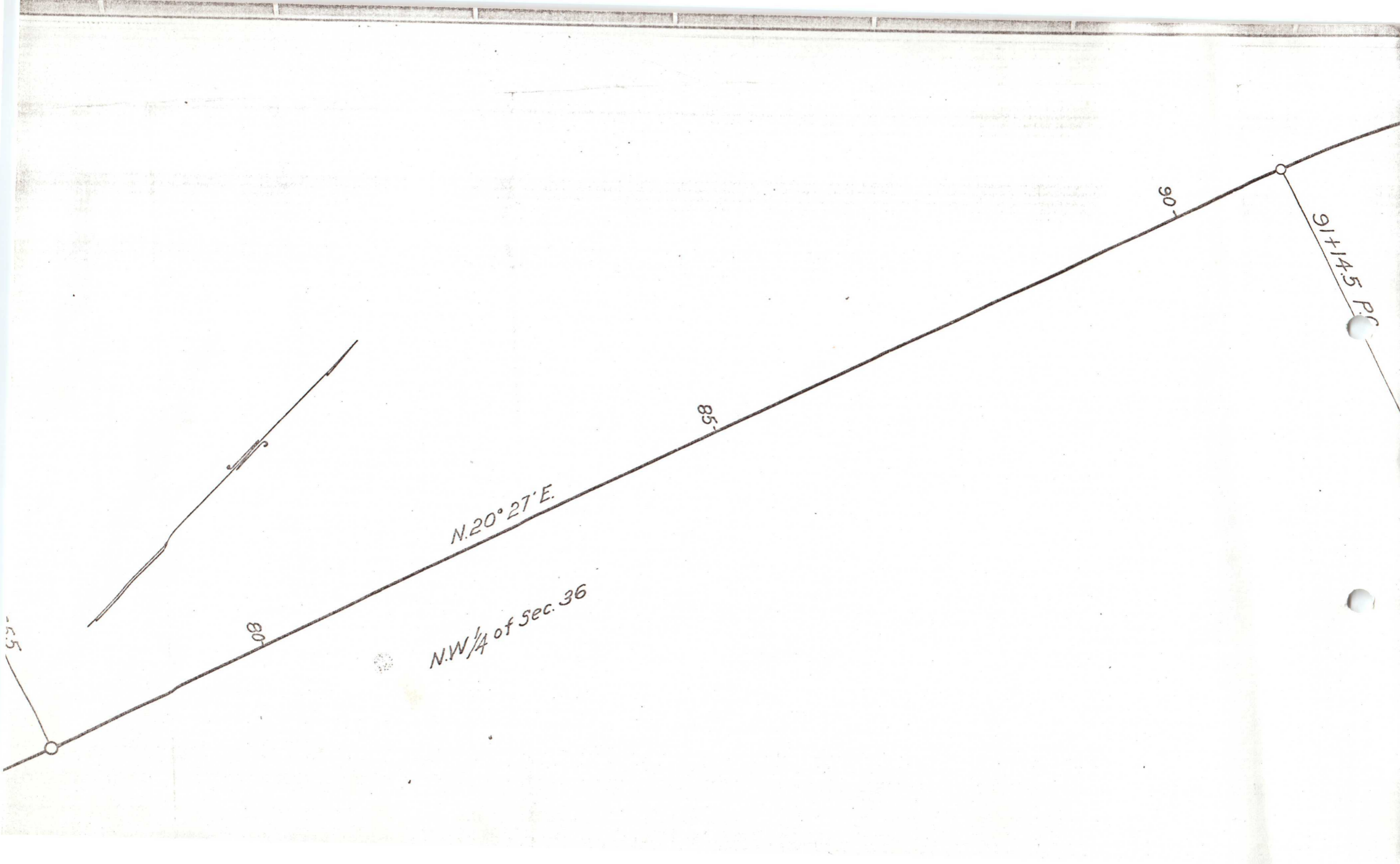
71+90.8 P.C.

65

70

75

Sec. 35



$N. 20^{\circ} 27' E.$

$NW \frac{1}{4}$ of Sec. 36

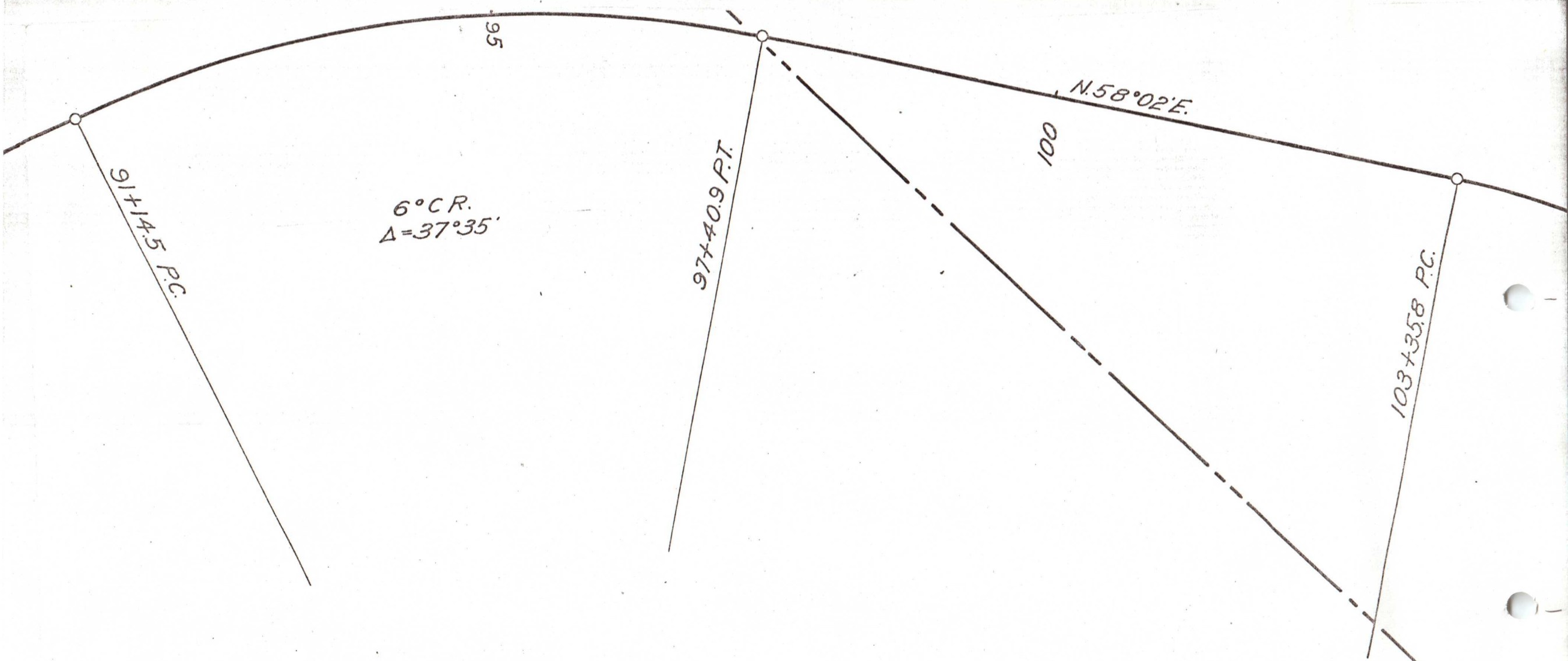
91+145 P.C.

85

80

90

85



91+14.5 P.C.

6° C.R.
Δ = 37° 35'

97+40.9 P.T.

100

N. 58° 02' E.

103+35.8 P.C.

S.W. 1/4 Sec.
N.W. 1/4 Sec. 36

105

6° C. R.
Δ = 73° 07'

110

115

115+54.4 P.T.

116+39.9 P.C.

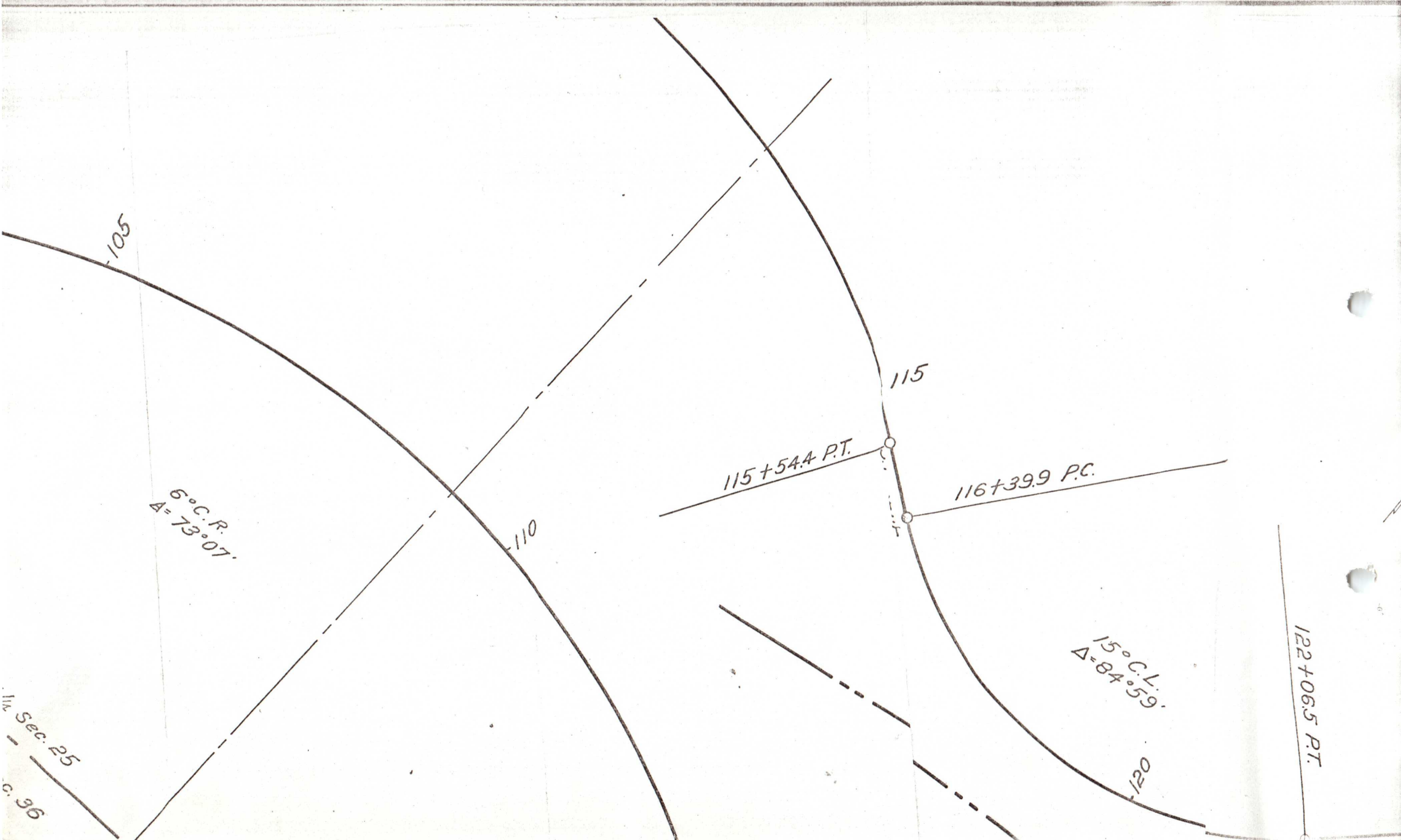
15° C. L.
Δ = 84° 59'

120

122+06.5 P.T.

1/4 Sec. 25

c. 36



125

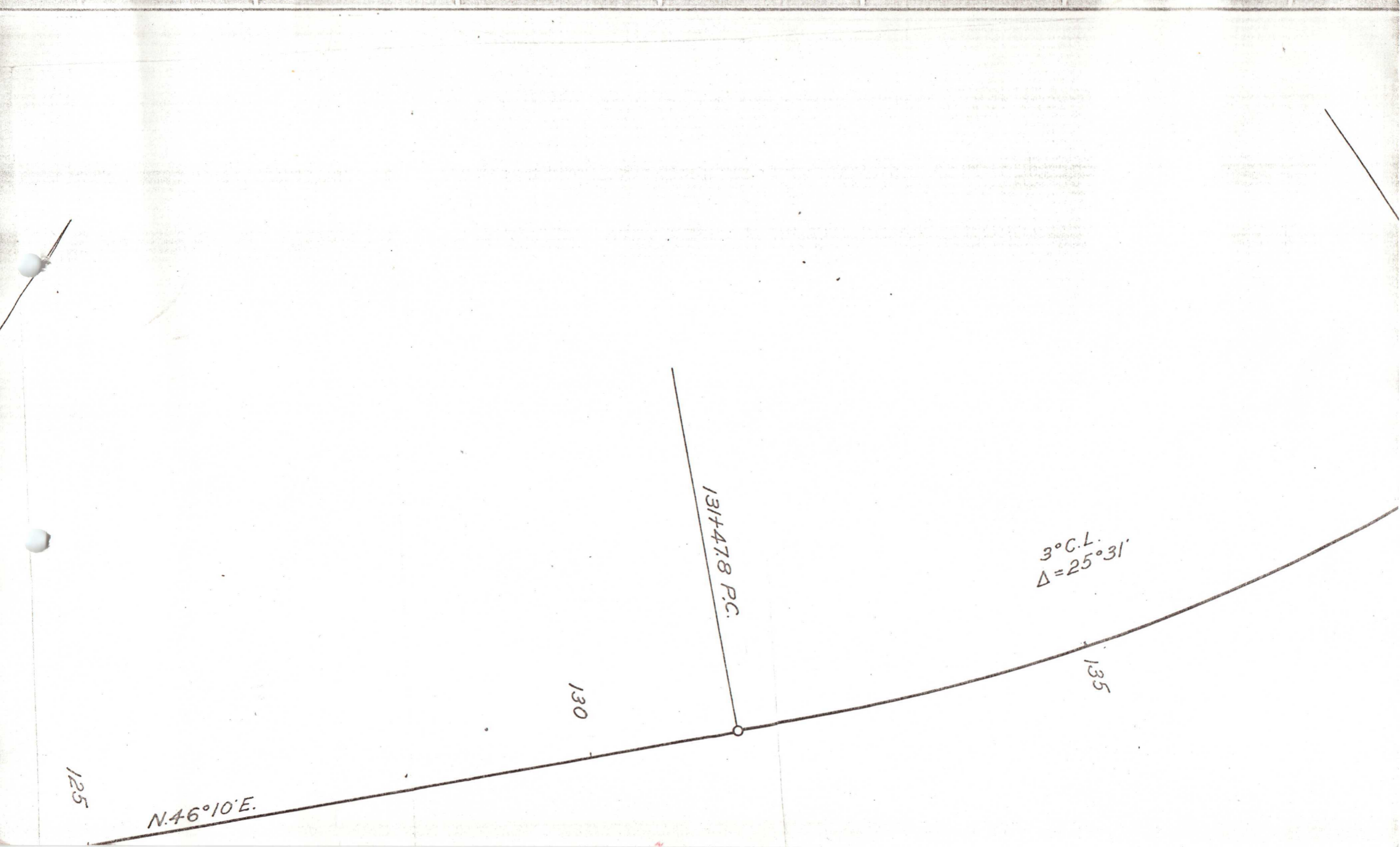
N.46°10'E.

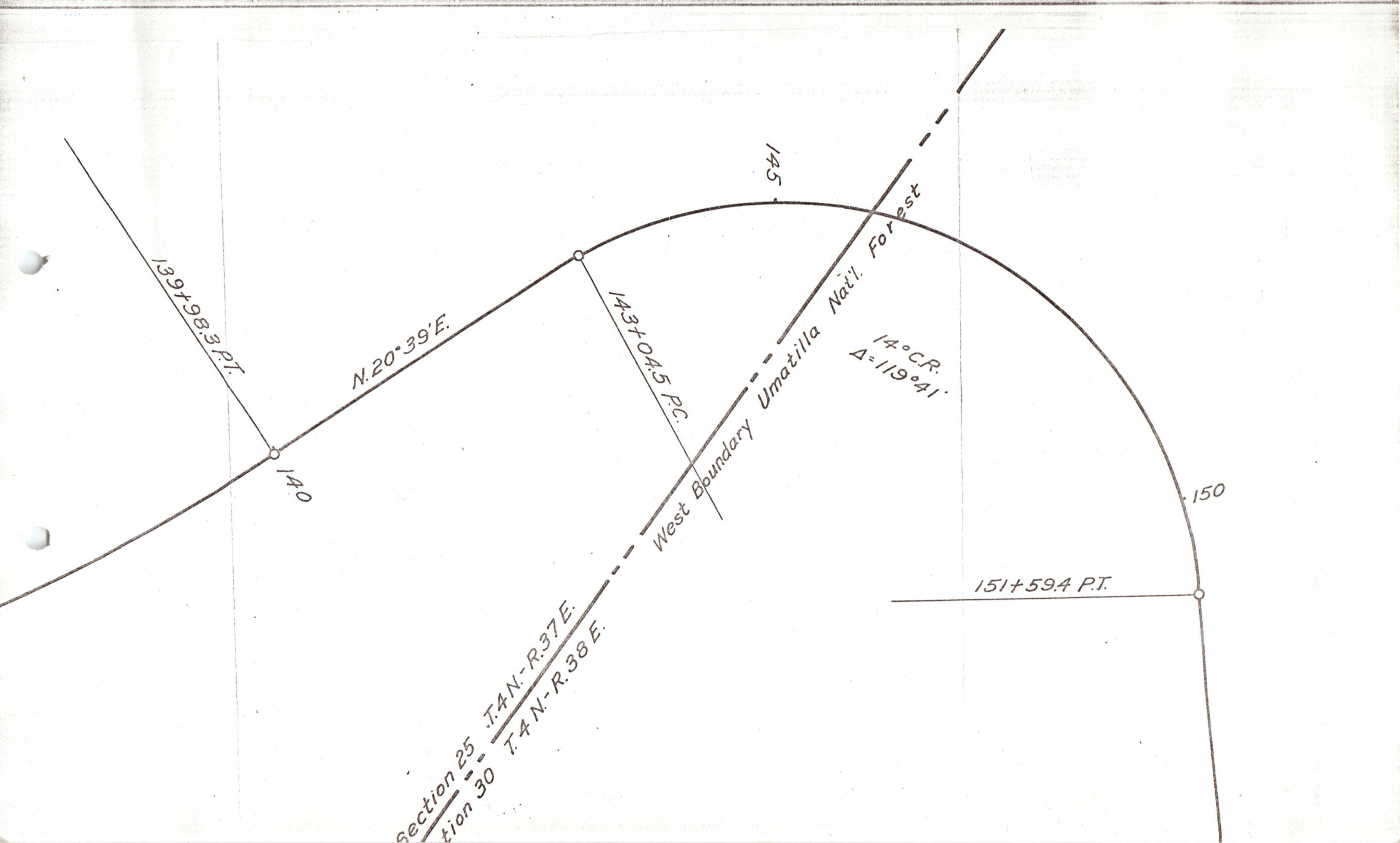
130

131+478 P.C.

135

3° C.L.
 $\Delta = 25^{\circ} 31'$





139+68.3 P.T.

N.20°39'E.

140

143+04.5 P.C.

145

West Boundary Umatilla Nat'l. Forest

14° C.R.
Δ=119°41'

150

151+59.4 P.T.

Section 25 T.4N.-R.37E.
Section 30 T.4N.-R.38E.

155

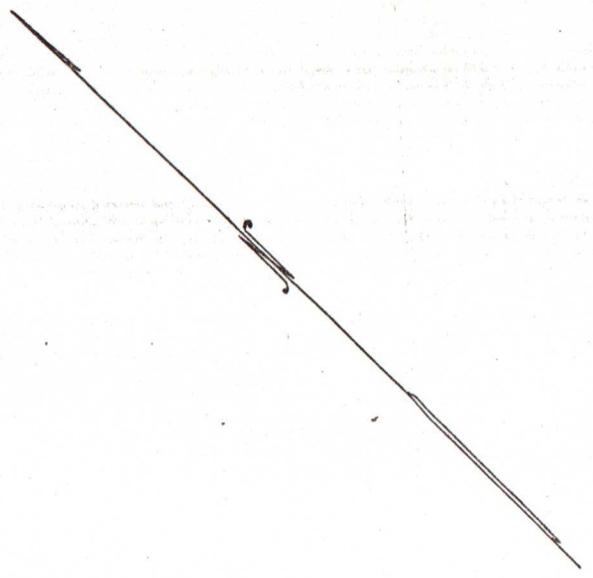
160

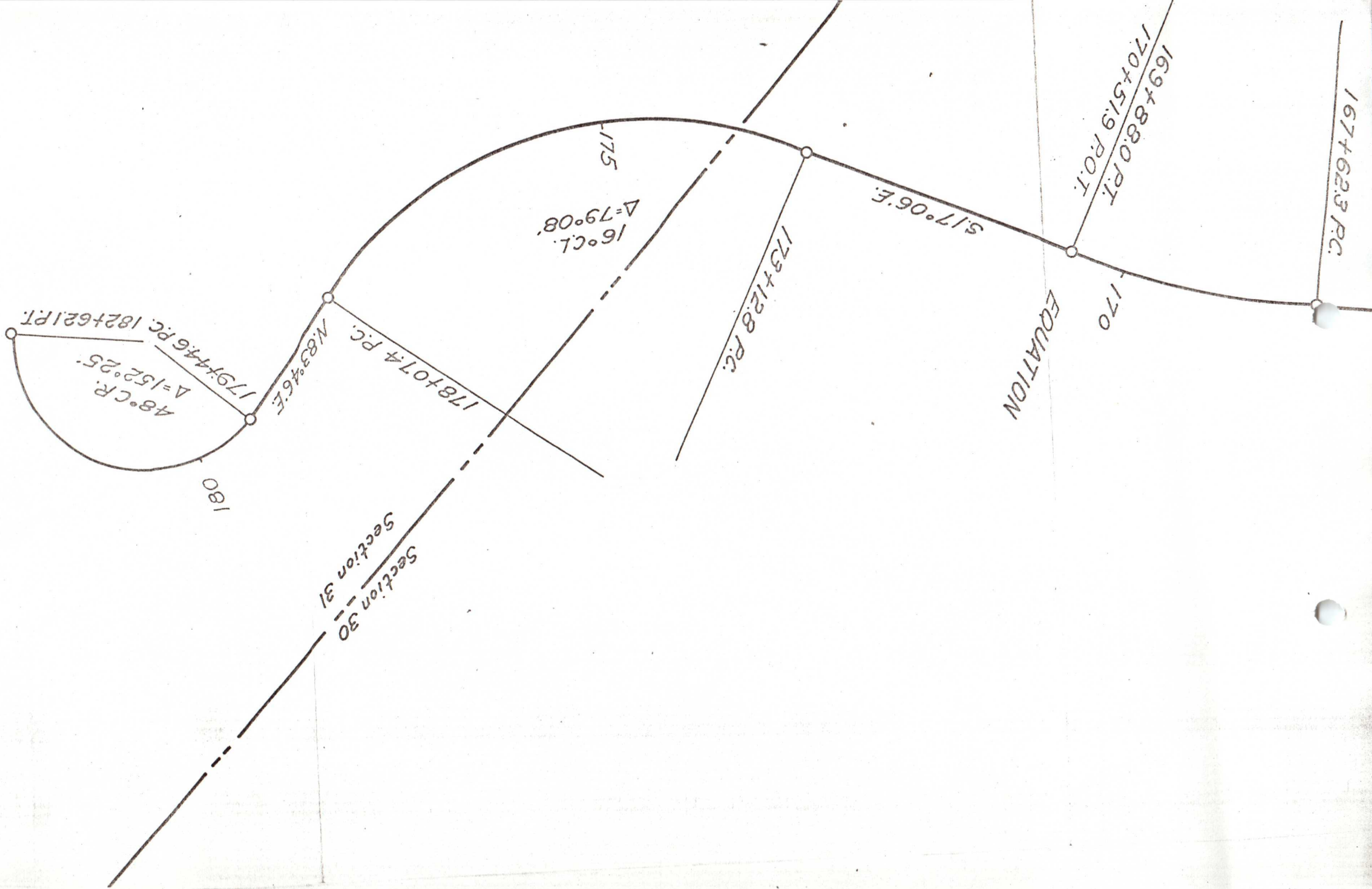
165

S. 39° 40' E.

167+62.3 P.C.

S.W. 1/4 Sec. 30





48° C.R.
 $\Delta = 152^\circ 25'$

182+62.1 P.T.

M. 11.955

184+27.6 P.C.

185

28° C.L.
 $\Delta = 98^\circ 59'$

187+81.1 P.T.

190

S. 42° 48' E.

190+15.0 P.C.

10° C.R.
 $\Delta = 29^\circ 28'$

193+09.7 P.T.

193+53.4 P.C.

P.T.

N.E. 1/4 Sec. 31

1937+53.4 P.C.

6° C.L.
 $\Delta = 26^{\circ}09'$

1977+89.2 P.T.

200

2017+57.7 P.C.

10° C.L.
 $\Delta = 97^{\circ}11'$

205

S 12° 17' E.

2007+38.8 P.T.

12° C.R.
 $\Delta = 7^{\circ}12'$

1987+12.1 P.C.

195

C.R.
 $\Delta = 9^{\circ}28'$

1937+09.7 P.T.

210+76.0 P.C.
211+70.0 P.O.T.
211+29.5 P.T.

EQUATION

210

10° C.L.
 $\Delta = 97^{\circ} 11'$

205

210+76.0 P.C.

210+760 P.C.

3°44' C.L.
Δ=34°35'

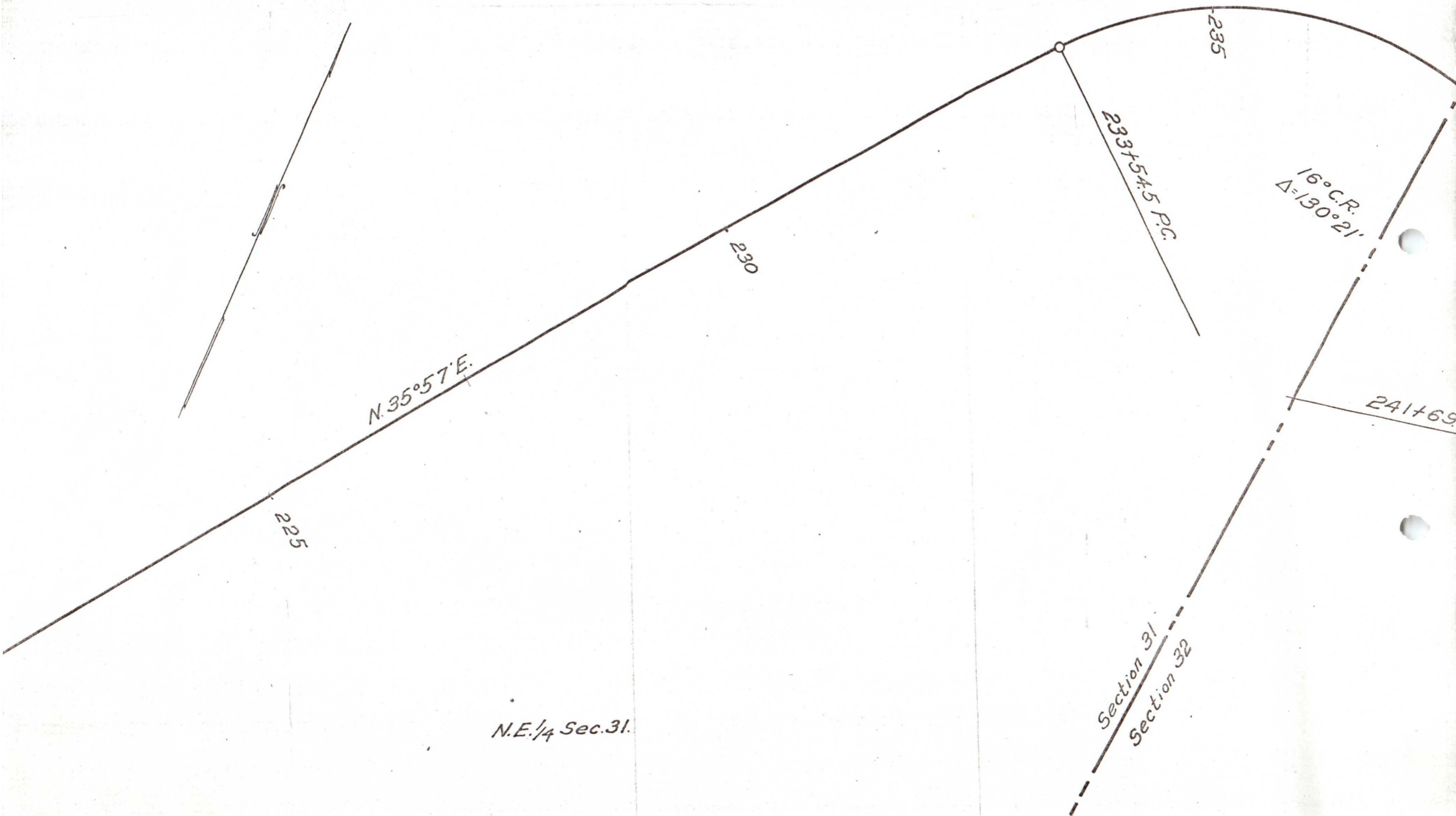
215

EQUATION

220+02.3 P.T.=
221+13.0 P.O.T.

220

225



$N. 35^{\circ} 57' E.$

225

230

235

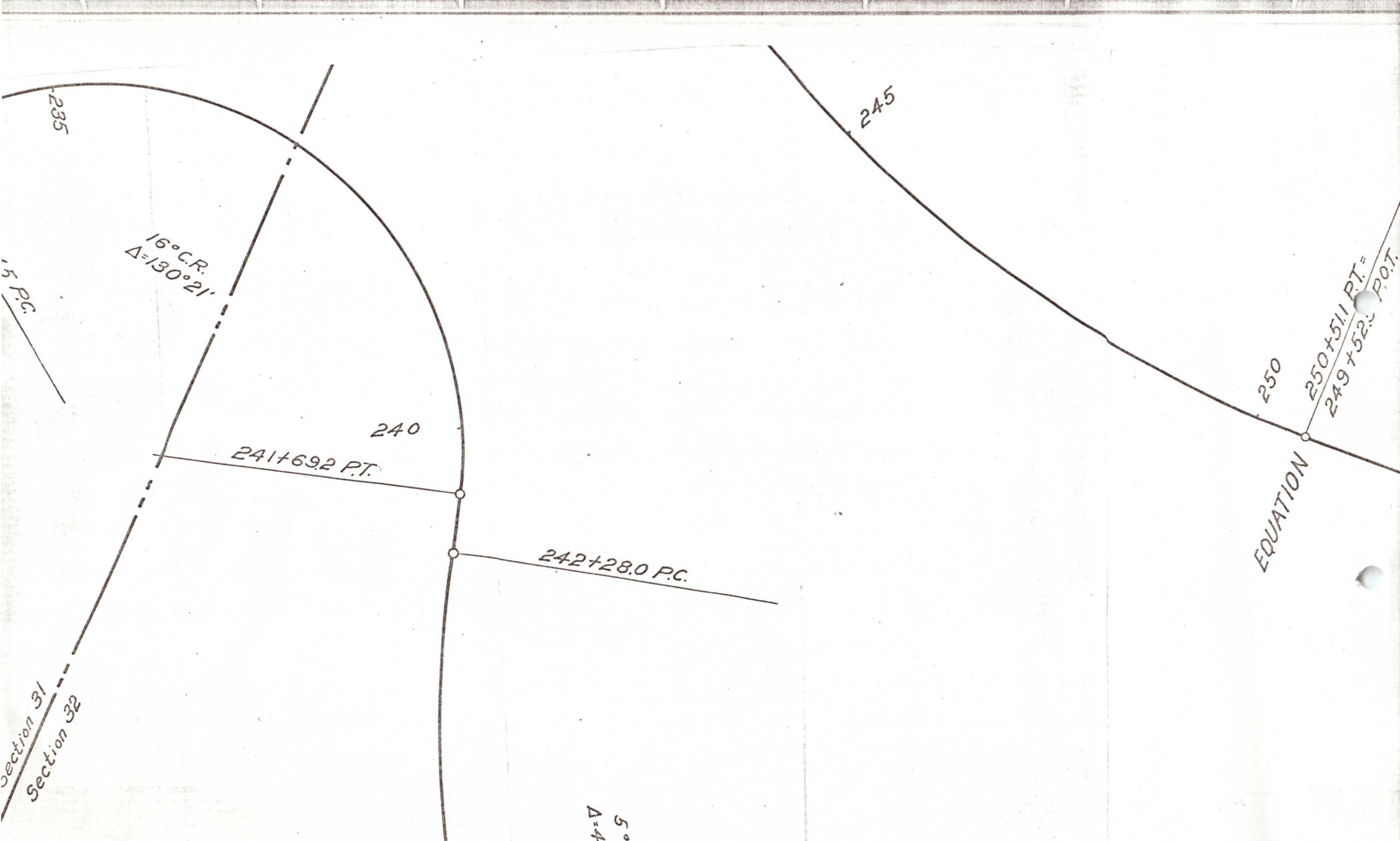
2337.54.5 P.C.

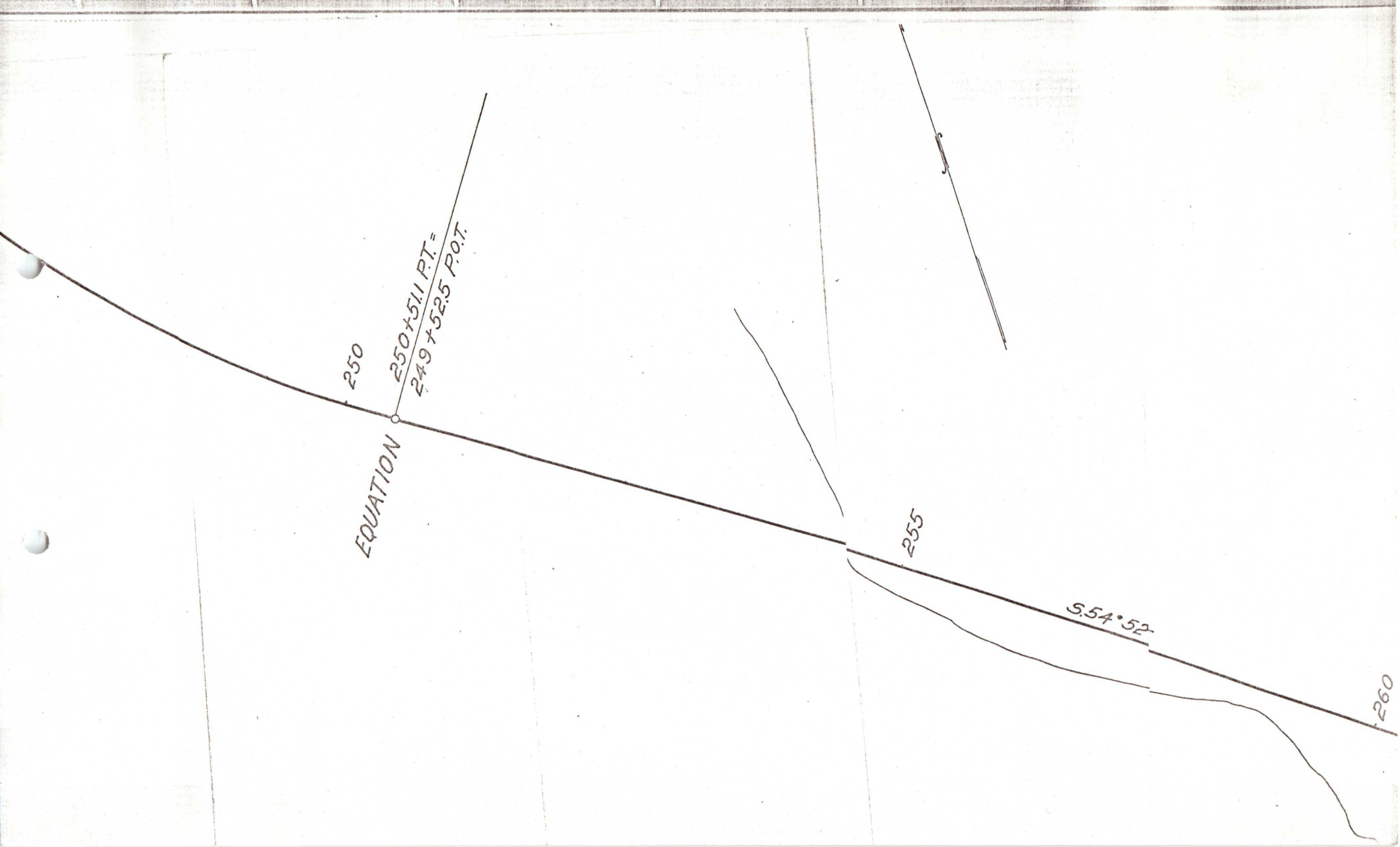
$16^{\circ} C.R.$
 $\Delta = 130^{\circ} 21'$

241+69

Section 31
Section 32

$N.E. \frac{1}{4} Sec. 31.$





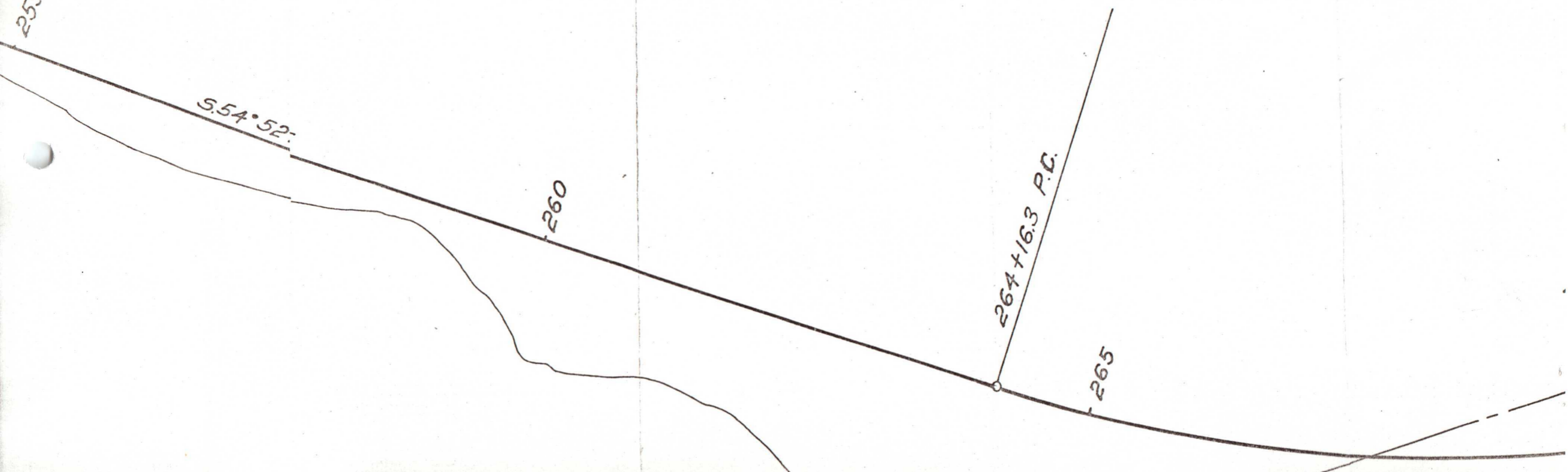
255

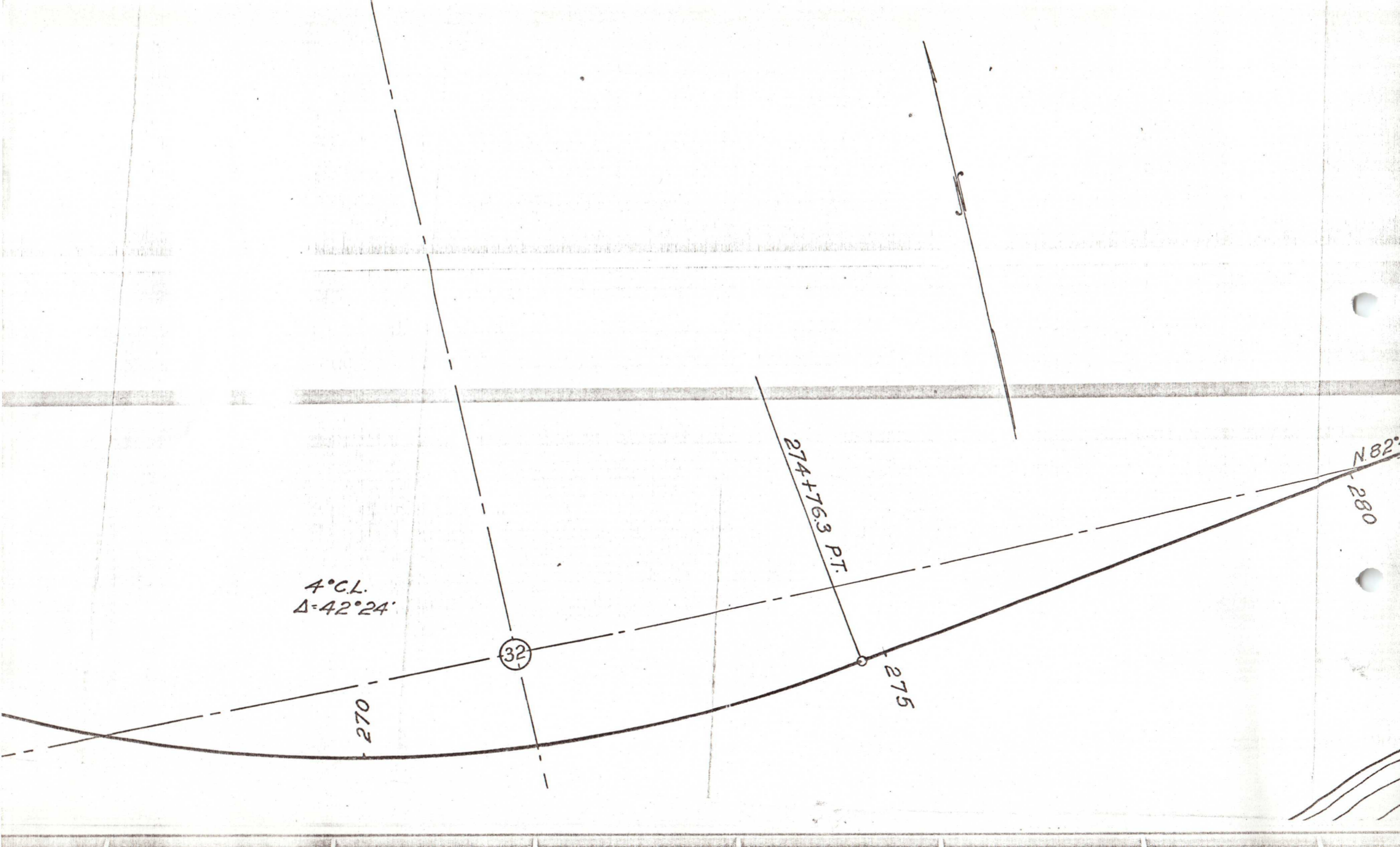
$S. 54^{\circ} 52'$

260

$264 + 16.3 P.C.$

265





4° C.L.
Δ=42°24'

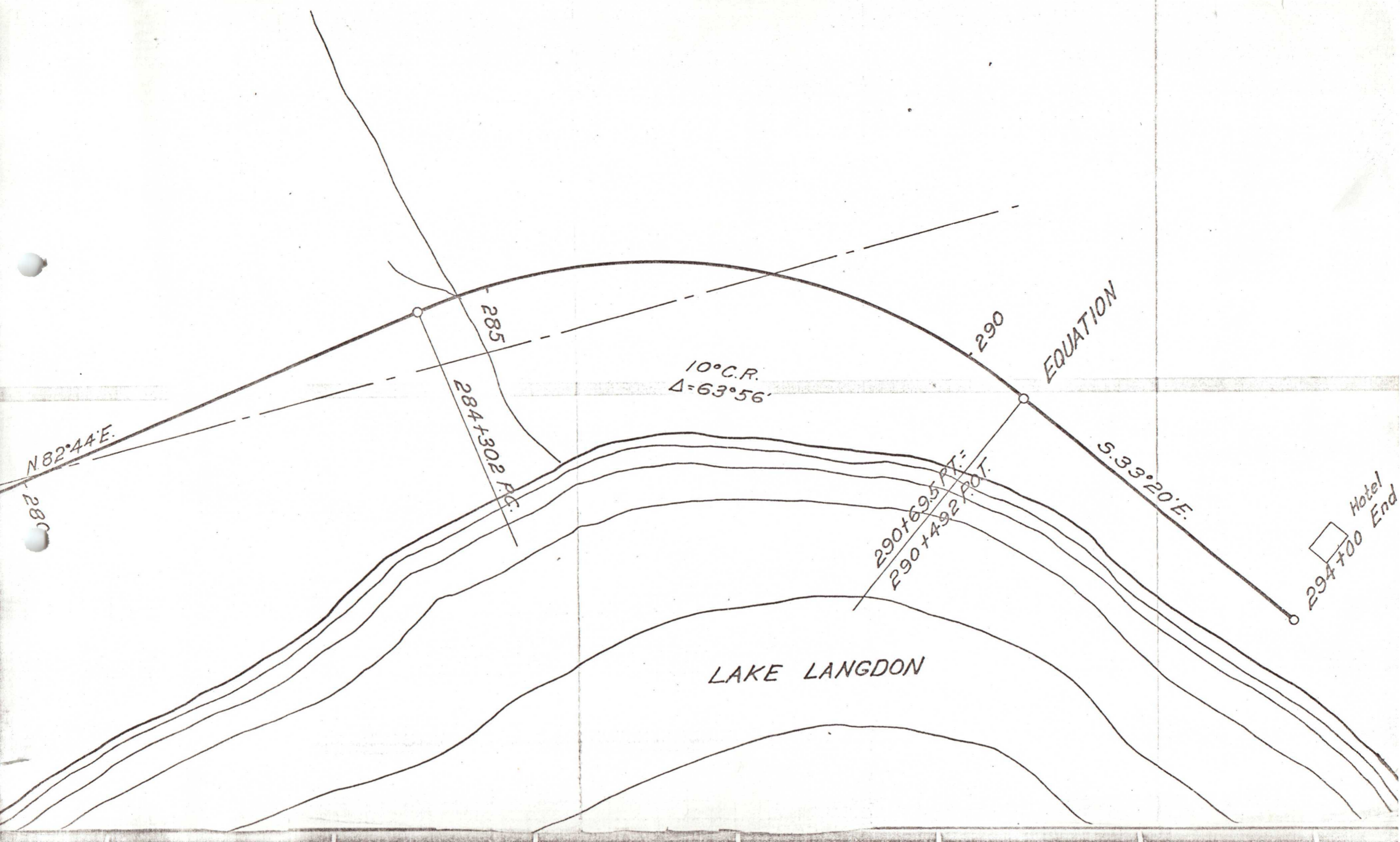
270

32

274+76.3 P.T.

275

N 82°
280



N 82° 44' E.

280

285

284+302 P.C.

10° C.R.
Δ = 63° 56'

290

EQUATION

S. 33° 20' E.

Hotel End
294+00

290+69.5 P.T. =
290+492 P.O.T.

LAKE LANGDON