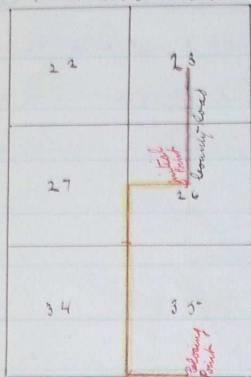


Plat of County Road N^o 250

Sp. & N. 35° E. 10. m



Journal G. page 42

" G. " 79

Recorded July 18th 1883

J.P. Bushnell
County Clerk.

Scale 1 inch to the mile

I hereby certify this to be a true
plat of Road N^o 250.

Surveyed May 7th 1883

By W. W. Caviness