

60

Field Notes of the survey of a county road
in Milton Precinct, Wasatch County, Oregon.

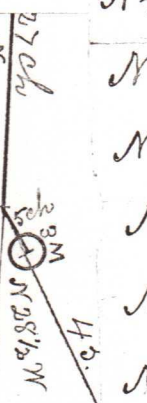
Set fir stake 4x4-4 on summit of graded hill
about 3 1/2 chains in westerly direction from W. Garred's.

marked & mounded as required by law

| Courses | Distances | |
|-------------|-----------------------------|------------------------------------------------------------------------------------------------------------------------|
| S 30° W | 4 ch. | Set round fir post, noting angle, on N side, R |
| S 85° W | 14 ch. | " " " " " " " " " " " " |
| S 83° E | ^{21 1/2} 3 3/4 ch. | intersects lower Linkton road, and returned to starting point, set angle post just south of U. Garred's. in lane. |
| N 7° E | ^{39 1/2} 6 " | " " " " near U. Garred's house |
| S 84° E | ^{42 1/2} 6 1/2 " | " " " " on south side of crossing of S. fork of W. W. Riv. |
| N 40 1/2° E | ^{42 1/2} 6 1/2 " | Crossed river and set angle post on N side of traveled R. |
| N 55° E | ^{43 1/2} 14 " | Set post noting angle, mounded, marked A |
| N 75° E | ^{44 1/2} 15 " | Set 1/2 mile post near house on the E, and to the right of trav R. mounded well with rock and earth; - changed course. |
| N 54° E | 11 " | Crossed N fork of W. W. Riv and formed pile of rock about the center of Riv. Ch. in high water, to note angle. |
| N 16° E | 12 1/2 " | Set angle post marked A on E side of traveled R. mounded |
| N 5° E | 16 1/2 " | " " " " " " " " " " " " |
| N 22° E | 14 " | " " " " " " " " " " " " |
| N 34° E | 11 " | " " " " " " " " " " " " |
| N 42 1/2° E | 11 1/2 " | Marked fence post, to note angle, A threw up mound. |
| N 19° W | 3 1/2 " | Set 2 mile post on west side of trav. Road. mounded. |
| N 19° W | 19 " | marked fence post on E side of trav road to note A, mounded. |
| N 2° W | 17 " | " " " " " " " " " " " " |
| N 34 1/2° W | 12 " | Set post noting angle - A |
| N | 27 " | " " " " " " " " " " " " |
| N 28 1/2° W | 5 " | Set 3 mile post on N side of trav. R. School house bears N 4° E ^{4 1/2 ch} |
| N 28 1/2° W | 45 " | Set post noting angle A mounded |

| | | |
|-----------|---------|------------------------------------------------------------------------------------------------------|
| N10 1/2 W | 20" | " " " " " " |
| N16 1/2 W | 15" | Set 4 mile stake on E side of trav R. mounded & marked 4 M |
| N16 1/2 W | 7" | on same course, & set post noting angle on E side of trav R. |
| N1 1/2 E | 73" | Set 3 mile post, fir 4x4-4 well mounded & marked 3 M |
| N1 1/2 E | 3 1/2" | on same course, crossing gulch, set angle post, mounded 1/2 ch south of rocky bluff - changed course |
| N32 W | 11 1/2" | Set angle post on or near line bet. Iso. Post & Mr. Hingate |
| S88 1/2 W | 10 1/2" | " " " mounded, E of Dr Blalock's fence |
| N | 21 1/4" | " " " south side of Geo. Swift's fence |
| W | 20 1/4" | SW corner of Geo. Swift's land claim, Rock in center, lane. |
| N4 W | 13" | Set 6 M post on W. side of trav R. in lane mounded, 6 M |
| N4 W | 80" | Set 7 M post, W. of center of lane, mounded, - marked 7 M. |
| N4 W | 20" | on same course - set angle post W of center of lane, mounded, |
| N2 W | 60" | Set 8 M post, in hollow, about center of lane, mounded - 8 M |
| N2 W | 45" | on same course - set post, noting angle by A - center of lane. |
| N3 W | 13 1/2" | Set termination at intersection of boundary line between Oregon & Washington (Tj.) |

Survey began Monday May 20 and completed Wednesday May 22nd 1878
 Jno. C. Arnold
 Surveyor.



Jno. C. Arnold
 Surveyor