

Report Survey and Plat of County Road from State Line
Blue mountains

To the Hon. County Court of Wasatch County State of Oregon.
The the viewers of a certain proposed County Road do hereby report that we met at State Line on Monday the 22^d day of June a 1870 having procured Wm. M. Hillis a Surveyor and J. W. Northrup and Geo. Dehaven as chaincarriers and E. C. Rice as marker having each duly sworn did proceed to view survey and mark the said road according to law and that Tuesday June 23^d C. Semaris Sen. was sworn as chaincarrier. And that we believe said road to be of public utility and recommend to the Hon. County Court that it be established as a County Road for the following reasons viz.

That it is already a leading thoroughfare between the valleys of Waaca Waaca and the country South East of the Blue mountains, that it is a good natural location for a road, the grades being generally easy, and that it is needed as a road to haul timber from the mountain into the valley.

Joseph Wood
Geo. Rice
W. A. Cowd

Field Notes

Commenced on State line 1 R and 15 links E of the mile post the top being rotted off and carried away and 109 rods and 14 links S. from the N.W. corner of Sec. 17 Town. 6 N. R. 36 E. in Washington Ter. set a post. Starting from said post we run S. 6 E. 104 R. and crossed Birch creek continuing same course 1 m. set post continuing same course at 44 R. crossed deep sand cut continuing same course at 2 m. set post. 3 m. do. 4 do. 5 do. 3/4 we arrived at the descent of the hill on the North of the Waaca Waaca River the first 4 m. nearly level, the balance rising gradually to this point set stake Thence South 5 deg. N. to 6 mile post continuing same course 36 R. A. P. S. 37 N. 100 R. A. P. S. 26 E. 72 R. A. P. S. 11 N. 40 R. S. 26 E. to 7 mile P. The post could not be planted in the river but was planted 4 R. short of ~~the~~ miles on N. side of the river being trees cottonwood diameter 17 in. course S 53 1/2 N. distance 150.236.

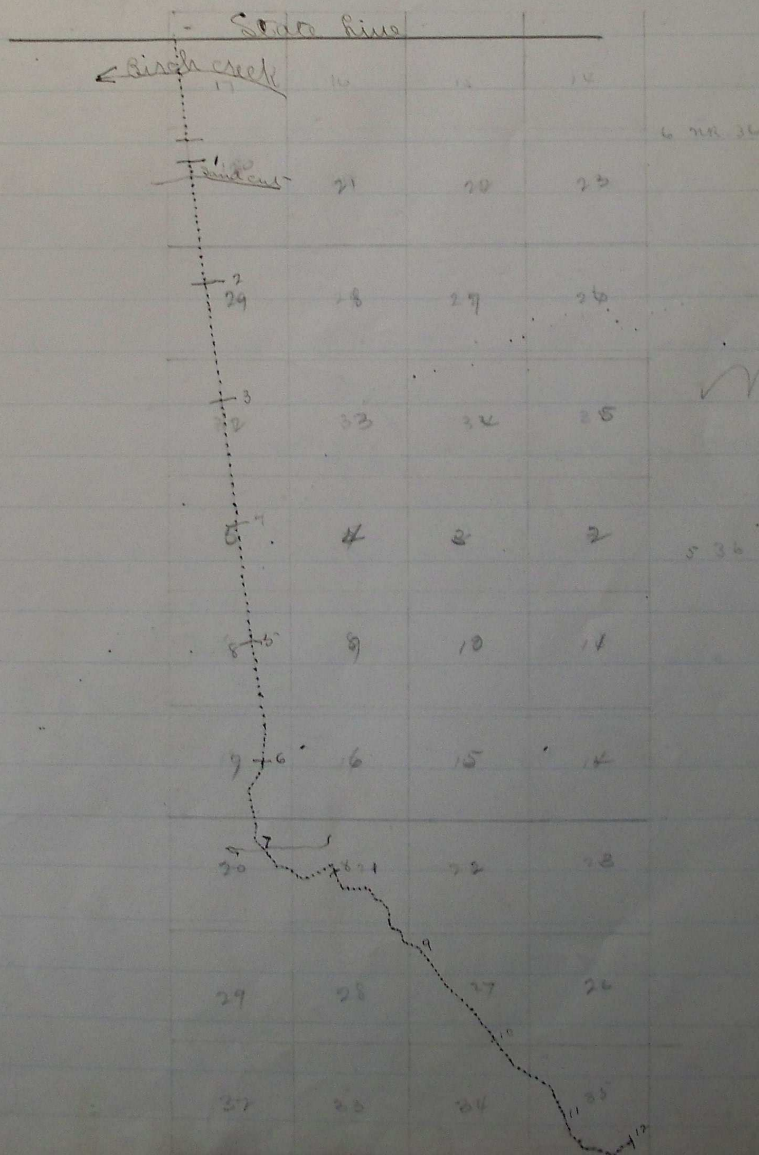
The other P. S. S 31 deg. E. Cottonwood diameter 10 in. distance 20 R and 3 E. continuing same course 66 R. A. P. S. 79 E. 82 R. A. P. S. 40 E. 42 R. A. P. S. 71 E. 37 R. A. P. S. 24 E. 44 R. A. P. S. 44 E. 44 R. A. P.

Rt #11

S. 21 E. 60 R. Planted 8 mile Post continuing same course 22 R. a. P.
 S. 87 E. 64 R. a. P. S. 52 E. 46 R. a. P. S. 82 E. 38 R. a. P. S. 87 E. 30 R.
 a. P. S. 76 E. 52 R. a. P. S. 65 E. 18 R. a. P. S. 17 E. 30 R. a. P. S. 54 E. to 9
 mile post planted it and continued same course 30 R. a. P. S. 36
 E. 128 R. a. P. S. 35 E. 162 R. to 10 mile post continuing same course 130
 R. a. P. S. 54 E. 112 R. a. P. S. 74 E. 72 R. planted 11 mile post and con-
 tinuing same course 60 R. a. P. S. 44 E. 46 R. a. P. S. 80 E. 80 R. a. P. S.
 E. 58 R. a. P. S. 63 E. 70 R. planted 12 mile post continuing same
 course. 44 R. a. P. S. 30 E. 130 R. a. P. S. 20 E. 128 a. P. S. 69 E. 16 R. plant-
 ed 13th mile post continuing same course 170 R. a. P. S. 65 E. 200 R.
 and planted the 14th mile post continuing same course 54 R.
 a. P. S. 44 E. 144 R. a. P. S. 37 E. 122 R. planted 15th mile post, angle
 S. 66 E. 204 R. a. P. S. 23 E. 116 R. planted 16th mile post Bearing tree
 red fir 23 in. in diameter N. 69 E. distant 10 R. and 10 l. the other
 bearing tree Pine 20 in. in diameter S. 89 E. distant 8 R. 30 l. a. P. S.
 40 E. 280 R. a. P. S. 54 E. 40 R. planted 17th mile post Bearing tree
 White fir 20 in. in diameter N. 90 E. distant 1 R. and 1 l. Bearing
 tree yellow fir diameter 27 in. distant 1 R. and 13 l. continuing
 same course 92 R. a. P. S. 65 E. 68 R. a. P. S. 60 E. 160 R. planted 18th
 mile post Bearing tree pine diameter 25 in. course S. 17 N. distant
 4 R. and 10 l. Bearing tree pine diameter 34 in. course N. 80 E. dis-
 tant 4 R. and 24 l. angle S. 41 E. 108 R. a. P. S. 15 E. 130 a. P. S. 53 E
 82 R. planted 19th mile post Bearing tree red fir diameter 20
 in. distant 9 R. and 4 l. course S. 21 E. Bearing tree white fir di-
 ameter 14 in. distant 7 R. and 14 l. course N. 86 E. continuing the
 same course 49 R. a. P. N. 78 E. 57 R. a. P. S. 47 E. 70 R. a. P. S. 12 E.
 30 R. a. P. S. 44 E. 32 R. a. P. S. 27 E. 48 R. a. P. E. 34 R. and used tree for
 20th mile post angle to N. 47 E. 140 R. a. P. S. 22 E. 51 R. a. P. S. 79 E
 19 R. a. P. S. 47 E. 60 R. a. P. N. 80 E. 24 R. a. P. N. 74 E. 20 R. a. P. to 21st
 mile post bearing tree red fir diameter 26 in. course N. 12 N. distance
 2 R. 17 l. bearing tree red fir diameter 12 in. course N. 1 N. distant 4
 R. 13 l. continuing same course 34 R. a. P. S. 12 E. 66 R. a. P. S. 50 E. 44 R.
 a. P. S. E. 52 R. a. P. N. 12 E. 44 R. a. P. S. 35 E. 38 R. a. P. S. 72 E. 42 R. to the 22nd
 mile post a tree being used for the same continuing same course 8 R.
 a. P. S. 36 E. 15 R. a. P. S. 62 E. 28 R. a. P. S. 79 E. 46 R. a. P. S. 5 E. 60 R. a. P.
 S. 79 E. 104 R. a. P. S. 71 E. 116 R. and used spruce tree for 23rd mile
 post continuing the same course 104 R. a. P. S. 35 E. and 100 R.
 crossed Summit Prairie creek continued same course 16 R. a. P. S.
 33 E. 104 R. a. P. S. 25 E. for the 24th mile post a white fir tree

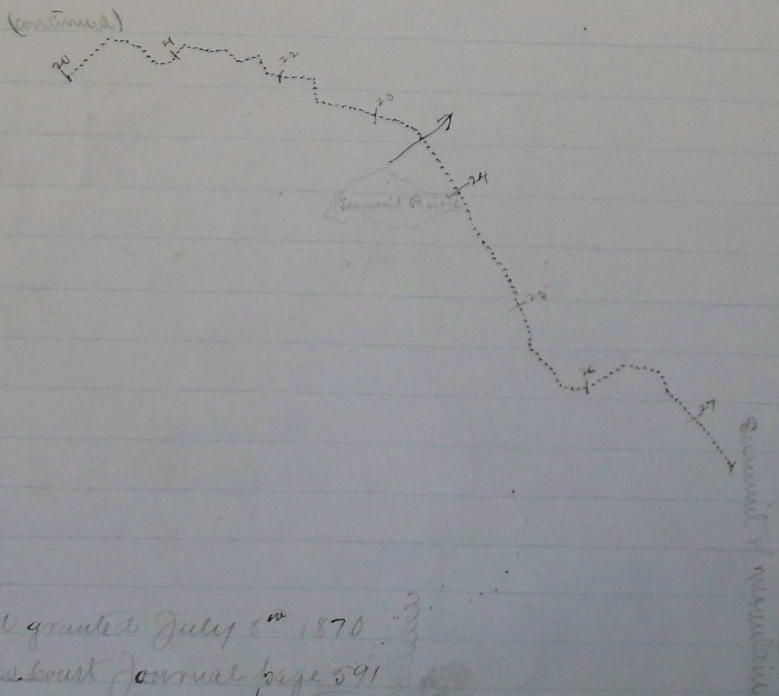
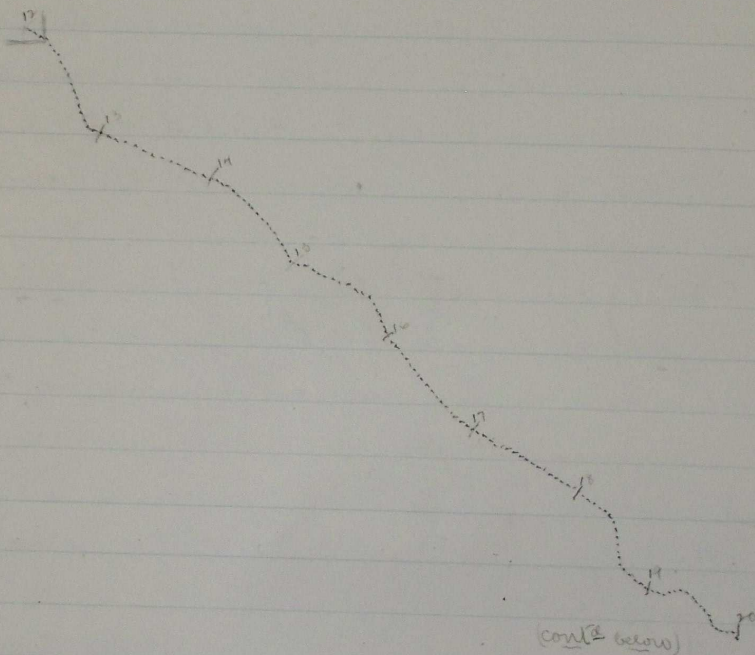
Rd #11
 26 in. in diameter angle to S. 28 E. 52 R. A. P. S. 35 E. 36 R. A. P. S. 34 E. 146
 R. A. P. S. 22 E. 62 R. For the 25th mile post a yellow fir tree diameter 20 in
 angle to S. 27 E. 22 A. P. S. 66 N. 32 R. A. P. S. 45 E. 86 R. A. P. S. 35 46 R. A. P.
 S. 58 E. 30 R. A. P. N. 67 E. 24 R. For 26th mile post a white fir tree 7 in.
 in diameter angle to N. 58 E. 52 R. A. P. N. 65 E. 08 R. A. P. S. 52 E. 10 R. A. P.
 S. 12 E. 02 R. A. P. S. 43 E., the 27th mile post on fir stump on large grade
 bearing tree white fir diameter 87 in. course S. 15 E. distant 33 links
 Bearing tree yellow fir diameter 39 in. course S. 34 N. distant 25
 links continue same course 71 R. A. P. S. 30 E. 143 R. to summit of Blue
 mountains Post at termination of road Pine tree 7 inches in diameter
 general course of road S. 41 E.

I hereby certify that the accompanying plat is correct according to field notes also that the foregoing is a correct copy of field notes taken from survey and measurement of the proposed county Road Plat of Road from State line }
 Blue Mts. }
 Wm. Willis
 Surveyor.



(continued page 20)

Rd #11
Plat of Road from State line
to
Blue Mountains
(continued)



Road granted July 5th 1870
See Laboult Journal page 591