

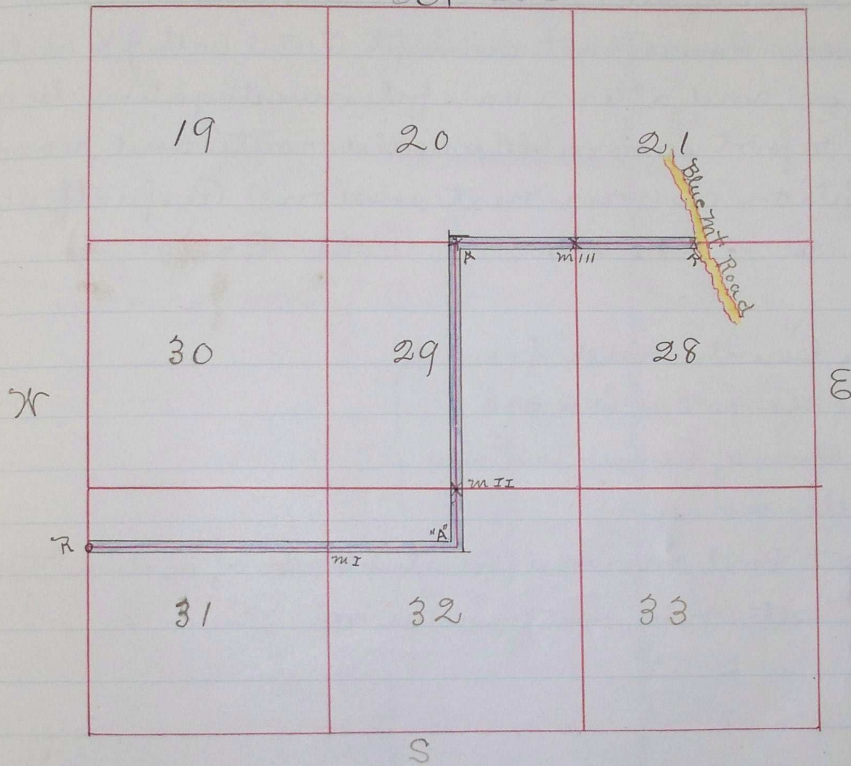
Ed #76

Plat of Report, and field notes of Co Road from N.W. cor Birchs Land claim on Milton & Walla Walla road. set. R. Post of N.W. of 31 T. 6. N. R. 36 E. run thence

East 80°	set mile Post. 1	}	East 20°	set mile post 3
" 40°	" 'a' "		" 40°	" R "
North 40°	" mile "		for terminus	
" 60°	" a' "		b. E. Bramel	

6. N. 36 E

Special Survey



Journal 10438

August 18th 1879

This is to certify that we have viewed the Road as per Survey commencing at the N.W. corner Birchs Land claim and terminating at Birch creek. & Blue mountain Road and find it a practicable Road

J. M. McKare

J. M. Stupfield

Filed Sept 14th 1879

Recorded Aug 25/80

W. K. Kenney clerk