

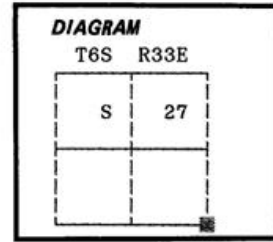
CERTIFIED RECORD OF LAND CORNER MONUMENTATION

V-11

History of original corner establishment:

Corner originally established by Frank W. Campbell under GLO contract number 468, dated April 12, 1883. Surveyor General record states:

Set alder post 4 ft long 4 ins square 24 ins in ground for cor to secs 26, 27, 34 and 35 marked T6S S26 on NE, R33E S35 on SE, S34 on SW and S27 on NW faces with 2 notches on E and 1 notch on S edges from which:
An Alder 8 ins dia brs N75°E 20 lks dist marked T6S R33E S26 BT
An Alder 6 ins dia brs S42°E 32 lks dist marked T6S R33E S35 BT
An Alder 10 ins dia brs S60°W 32 lks dist marked T6S R33E S34 BT
An Alder 8 ins dia brs N42°W 7 lks dist marked T6S R33E S27 BT



No record of subsequent monumentation found in Umatilla County survey records.
Description of corner evidence found:

Found a marshy area as described in the GLO notes. The North-South distance is a chain short of record distance. The East edge is somewhat vague. There is no other marsh like this in the area. I am confident that this is the location that he originally monumented the corner. I use the South and West edge of the marsh for control and set the corner monument at the original GLO call distance from these edges of the marsh.

See map of survey dated August, 1987.
Description of monument and accessories established to perpetuate the

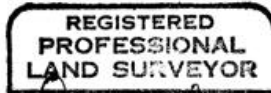
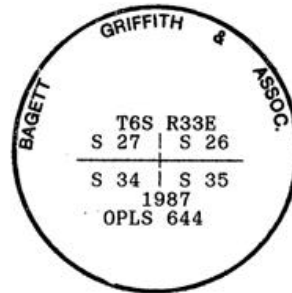
original location of this corner: At the record GLO distance from the South and West edges of the marsh as described above, I set a 2 1/2" x 30" aluminum pipe with aluminum cap marked as shown, 30 inches in the ground, from which;

New BTs;
A 15 inch diameter Spruce bears N56°E, 71.34 feet marked T6S R33E S26 BT
A 14 inch diameter Spruce bears S44°E, 127.60 feet marked T6S R33E S35 BT
A 13 inch diameter Western Larch bears S52°W, 199.40 feet marked T6S R33E S34 BT
A 19 inch diameter Spruce bears N28°W, 90.17 feet marked T6S R33E S27 BT

I painted a 6 inch red band around all BTs and attached 54-3 and 54-9 signs.

Set a steel fencepost approximately 5 feet North with 54-9 sign attached.

I hereby certify that the above corner point was perpetuated as hereon described on July 28, 1987.



I used a steel tape and magnetic compass in the establishment of new accessories. I used 17° East magnetic declination and the distances are to a 50d spike driven in the right side of the root crown. I attached a brass washer marked OPLS 644 to the BT blaze.

Office of Survey Dept County of Umatilla
State of OR, I hereby certify that the within instrument was filed in this office for record on the 24 day of August, 1987
David H. Kauffman by Kathleen K. Knaberg
(COUNTY OFFICIAL) (DEPUTY)

87-47-C