

OREGON CORNER RESTORATION FORM

Section: 35 & 36
Township: 6 North
Range: 35 East of the Willamette Meridian
County: Umatilla
Date: June 28, 2002

Corner Indexing Information: Township 6N Range 35E Corner Code X 21 (Willamette Meridian)

Additional Identifier: (e.g. BLM designation for the corner, street intersection, plat name, block, lot, etc.)

This quarter corner is common to sections 35 & 36.

Oregon Plane Coordinates: N: 841180.404 E: 8738068.972

Zone: North **Order:** second **Datum:** NAD83-91 **Convergence:** 1°29'40.5" **Scale Factor:** .99994135

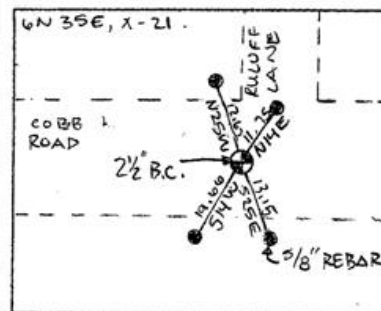
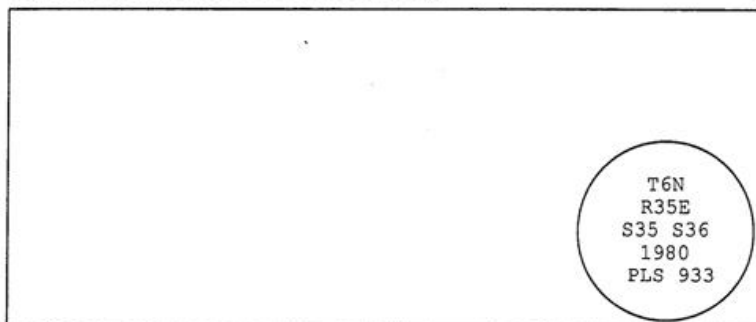
Previous Renewals/Surveys, etc: Originally surveyed by U.S. Deputy Surveyor William Odell under his contract No. 110, dated 8-23-1865. The Surveyor General's notes state, "set quarter section post on level, drove charred stake, and raised mound of stones as per instructions." Survey No. 173, Book 2, Page 516, dated September 22, 1903, Kimbrell makes note of this corner but does not describe it. Survey No. A-41-AX, dated December 1965, Thompson found a red stone with a "+" on top. Survey No. Q-1195-B, dated 9-19-79, Dwyer found a 1/2" iron pin by a stone. Survey No. S-157-C, dated 8-11-80, Krumbein found a 1/2" iron pin and set a brass cap.

Monument(s) & Accessories Found (Condition & Source):

At the west quarter corner of section 36, T6N R35E, we found 2 1/2" brass cap 3" below the surface pavement.

Monument Set (Procedures & Description):

Monument Detail:



New Accessories: WE SET:

A 5/8 rebar with yellow plastic cap stamped 'Tomkins Surveying' which bears N 14°E ~ 11.75 from the corner. No Umatilla County Bearing object sign or t-post set. A 5/8 rebar with yellow plastic cap stamped 'Tomkins Surveying' which bears S 25°E ~ 13.15 feet from the corner. No Umatilla County Bearing object sign or t-post set. A 5/8 rebar with yellow plastic cap stamped 'Tomkins Surveying' which bears S 14°W ~ 19.66 feet from the corner. Attached a Umatilla County Bearing object sign to the northeast face of guy pole. A 5/8 rebar with yellow plastic cap stamped 'Tomkins Surveying' which bears N 25°W ~ 12.67 feet from the corner. Attached a Umatilla County Bearing object sign to the southeast face of power pole.

Location & Comments:

Compass Declination:

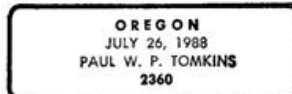
19° East

Surveyor's Seal

Firm/Agency: Tomkins Land Surveying, Inc.
 20 E. Poplar, Suite 204
 Walla Walla, WA 99362



Paul W. P. Tomkins



*renewal 6/30/09
6/30/02*

Party Chief: Bryan Martin
Notes: Bryan Martin
Witness: Eric Flowers