

OREGON CORNER RESTORATION FORM

Section: 28, 29, 32, 33
 Township: 6 North
 Range: 35 East of the Willamette Meridian
 County: Umatilla
 Date: June 28, 2002

Corner Indexing Information: Township 6N Range 35E Corner Code V 9 (Willamette Meridian)

Additional Identifier: (e.g. BLM designation for the corner, street intersection, plat name, block, lot, etc.)

This corner is common to sections: 28, 29, 32, 33.

Oregon Plane Coordinates: N: 843419.835 E: 8722095.461

Zone: North **Order:** second **Datum:** NAD83-91 **Convergence:** 1°27'00.8" **Scale Factor:** .99995031

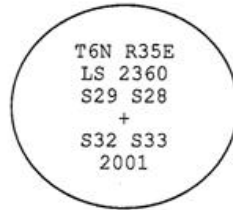
Previous Renewals/Surveys, etc: This corner was originally set by U.S. Deputy Surveyors William Odell under his contract No. 110 dated August 23, 1865. The Surveyor General's notes state, "set post corner, drove charred stake, dug pits and raised mounds per instructions". Arnold found a stone over charred end of original post as shown on Survey Book 1, Page 188 dated October 15, 1888. In 1973 on survey I-89, Streamer found a railroad spike of unknown origin.

Monument(s) & Accessories Found (Condition & Source):

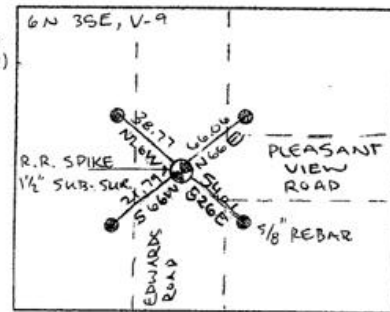
At the southwest corner of section 28, T6N R35E, we found a railroad spike 1 1/2" below the surface pavement.

Monument Set (Procedures & Description):

Removed the railroad spike and set a 1 1/2" x 15 1/2" galvanized iron pipe in concrete. Filled the pipe with concrete and set a 2" brass disc. On the top of the pipe 1/4" below the surface pavement stamped (see example below)



Monument Detail:



New Accessories: WE SET:

A 5/8 rebar with yellow plastic cap stamped 'Tomkins Surveying' which bears N 66°E ~ 66.06 from the corner. Attached a Umatilla County Bearing object to a t-post. A 5/8 rebar with yellow plastic cap stamped 'Tomkins Surveying' which bears S 26°E ~ 54.01 feet from the corner. Attached a Umatilla County Bearing object to the northwest face of power pole. A 5/8 rebar with yellow plastic cap stamped 'Tomkins Surveying' which bears S 66°W ~ 21.79 feet from the corner. Attached a Umatilla County Bearing object to the east face of a locust fence post. A 5/8 rebar with yellow plastic cap stamped 'Tomkins Surveying' which bears N 26°W ~ 38.77 feet from the corner. Attached a Umatilla County Bearing object to a t-post.

Location & Comments:

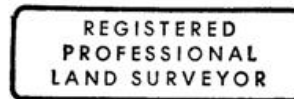
Compass Declination:

19° East

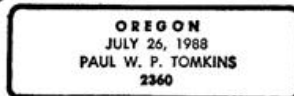
Firm/Agency: Tomkins Land Surveying, Inc.
 20 E. Poplar, Suite 204
 Walla Walla, WA 99362

Party Chief: Bryan Martin
Notes: Bryan Martin
Witness: Eric Flowers

Surveyor's Seal



Paul W. P. Tomkins



*renews 6/30/04
 6/30/02.*