

OREGON CORNER RESTORATION FORM

Section: 25
Township: 6 North
Range: 34 East of the Willamette Meridian
County: Umatilla
Date: June 1, 2002

Corner Indexing Information: Township 6N Range 34E Corner Code V 25 (Willamette Meridian)

Additional Identifier: (e.g. BLM designation for the corner, street intersection, plat name, block, lot, etc.)

Corner is common to sections 25,30,36,31 of T6N R34E and T6N R35E.

Oregon Plane Coordinates: N: 843212.426 E: 8711507.886

Zone: North **Order:** second **Datum:** NAD83-91 **Convergence:** 1°25'14.5" **Scale Factor:** .99995320

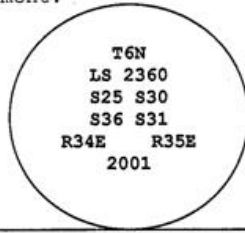
Previous Renewals/Surveys, etc.: This corner was originally set by U.S. Deputy Surveyors William Odell and William Lewis under their contract No. 110 dated February 7, 1865. The Surveyor Generals notes state "set post corner, drove charred stake, dug pits and raised mounds per instructions". In 1964, Wallulis shows a "rock with cross" at the corner (Co. Survey A-3-AX). In 1997, Tomkins Land Surveying shows a "rock with cross" at the corner (Co. Survey 97-220-C).

Monument(s) & Accessories Found (Condition & Source):

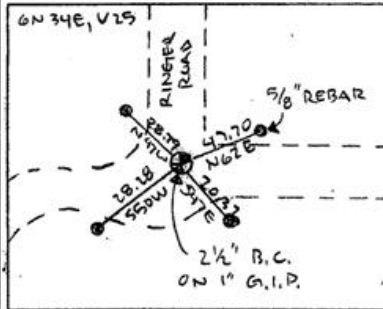
In the Southeast Corner of section 25, T6N R34E, found granite stone with "x" 6"x9"x12" 0.4 below the surface gravel.

Monument Set (Procedures & Description):

At the surface, set a 2" aluminum cap with 1" x 30" flared end galvanized pipe with 2 1/2 brass cap stamped (see example below). 12" below surface gravel buried inverted stone along the North side of the Monument.



Monument Detail:



New Accessories: WE SET:

A 5/8 rebar with yellow plastic cap stamped 'Tomkins Surveying' which bears N 62°E ~ 47.70 feet from the corner. Attached a Umatilla County Bearing Object Sign to the South face of a Railroad tie. A 5/8 rebar with yellow plastic cap stamped 'Tomkins Surveying' which bears S 47°E ~ 20.37 feet from the corner. No sign or t-post set. A 5/8 rebar with yellow plastic cap stamped 'Tomkins Surveying' which bears S 50°W ~ 28.28 feet from the corner. Attached a Umatilla County Bearing Object Sign to the Northeasterly face of Power Pole. A 5/8 rebar with yellow plastic cap stamped 'Tomkins Surveying' which bears N 47°W ~ 28.79 feet from the corner. Attached a Umatilla County Bearing Object Sign to the Southeast face of Guy Pole.

Location & Comments:

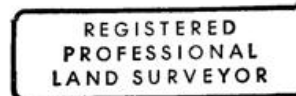
Compass Declination:

19° East

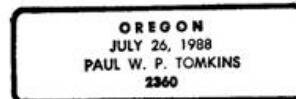
Firm/Agency: Tomkins Land Surveying, Inc.
 20 E. Poplar, Suite 204
 Walla Walla, WA 99362

Party Chief: Bryan Martin
Notes: Bryan Martin
Witness: Eric Flowers

Surveyor's Seal



Paul W. P. Tomkins



*renew 6/30/09
6/30/02*