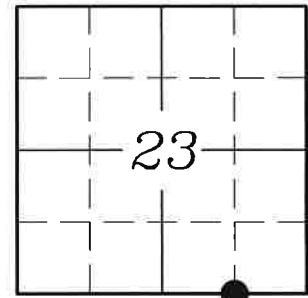


CORNER REMONUMENTATION FORM

R - 20

HISTORY OF ORIGINAL CORNER ESTABLISHMENT

THE EAST SIXTEENTH BETWEEN SECTIONS 23 AND 26 LIES AT THE CENTER OF THE WALLA WALLA VALLEY RAILROAD, PER "WALLA WALLA VALLEY RAILROAD CO., N.P.R., MAIN LINE WALLA WALLA TO MILTON RIGHT OF WAY PLAT (SHEET 24, NOV. 1, 1960)"



DESCRIPTION OF CORNER EVIDENCE FOUND

NONE. THE RAIL ROAD TRACKS HAVE BEEN REMOVED.

T. 6 N., R. 35 E.

DESCRIPTION OF MONUMENTS FOUND

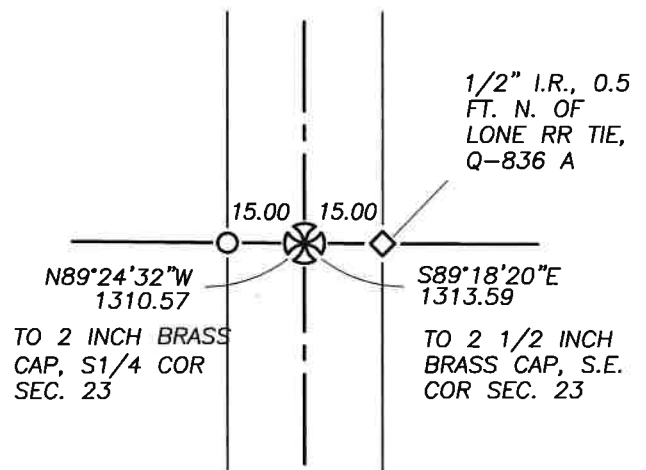
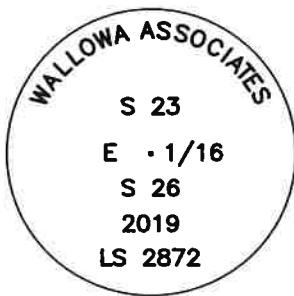
SEE SEE COUNTY SURVEYS 19-050-B & 19-054-B

THIS SIXTEENTH CORNER WAS ESTABLISHED ON A PROJECTED LINE BEGINNING AT THE S.E. COR. OF SEC. 23 AND CONTINUING THROUGH A 1/2 IRON ROD (CS Q-836-A).

- A 1/2 INCH IRON ROD BRS. S89°18'20"E, 15.00 FT.
- A 2 1/2 IN BRASS CAP (S.E. COR. SEC. 23) BRS. S89°18'20"E, 1313.59 FT.

DESCRIPTION OF MONUMENT AND ACCESSORIES I ESTABLISHED TO PERPETUATE THE LOCATION OF THIS CORNER :

A 5/8 X 30 INCH IRON ROD WITH 1 1/2 INCH ALUM CAP MKD: "WALLOWA ASSOCIATES, S23, E1/16, S26, 2019 LS 2872"



FROM WHICH :

A 1/2 INCH IRON ROD BRS. S89°18'20"E, 15.00 FT.

A 5/8 X 30 INCH IRON ROD WITH LIGHT BLUE PLASTIC CAP MKD: "WALLOWA ASSOCIATES," BRS. N89°24'32"W, 15.00 FT.

OFFICE OF _____ COUNTY OF _____

STATE OF _____, I HEREBY CERTIFY THAT THE

WITHIN INSTRUMENT WAS FILED IN THIS OFFICE FOR RECORDING ON

_____ DAY OF _____, 2019

BY _____ (COUNTY OFFICIAL) BY _____ (DEPUTY)

REGISTERED
PROFESSIONAL
LAND SURVEYOR

Rodney J. Lewis

OREGON
JULY 14, 1998
RODNEY J. LEWIS
2872

EXPIRES 12-31-20

19-054-B