

OREGON CORNER RESTORATION FORM

Section: 21 & 22
Township: 6 North
Range: 35 East of the Willamette Meridian
County: Umatilla
Date: June 1, 2002

Corner Indexing Information: Township 6N Range 35E Corner Code P 13 (Willamette Meridian)

Additional Identifier: (e.g. BLM designation for the corner, street intersection, plat name, block, lot, etc.)

This quarter corner is common to sections 21 & 22.

Oregon Plane Coordinates: N: 851548.452 E: 8727252.868

Zone: North **Order:** second **Datum:** NAD83-91 **Convergence:** 1°27'54.6" **Scale Factor:** .99995661

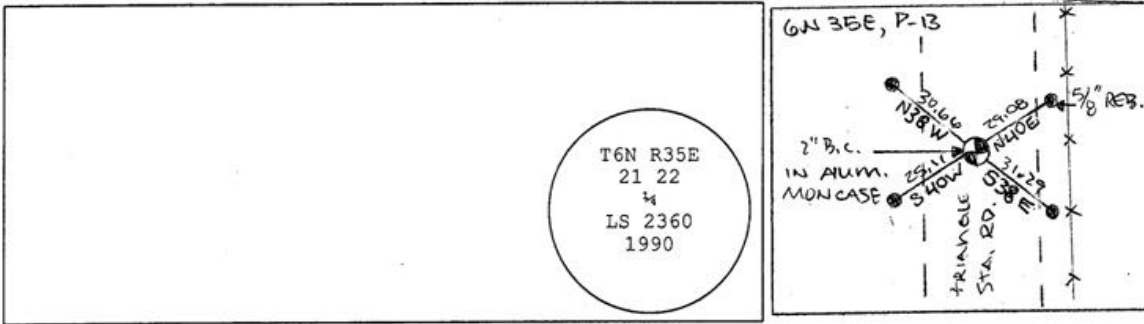
Previous Renewals/Surveys, etc.: Originally surveyed by U.S. Deputy Surveyor William Odell under his contract No. 110, dated 8-23-1865. The Surveyor Generals notes state, "set ¼ section corner post, dug pits, and raised mounds as per instructions." Survey No. 53, Book 1, Page 250, dated April 21, 1892, Arnold set red porous basalt stone, 19"x8"x6", 16" in the ground by survey. Survey No. 172, Book 1, Page 515, dated September 21, 1907, Kimbrell set a stone 16"x8"x6" by survey. Survey No. 90-13-B, dated February, 1990, Tomkins Land Surveying set a 2" brass cap in an aluminum monument case at the proportioned position.

Monument(s) & Accessories Found (Condition & Source):

At the west quarter corner of section 22, T6N R35E, we found a 2" brass cap in aluminum monument case with no lid, 1 ½" below the surface.

Monument Set (Procedures & Description):

Monument Detail:



New Accessories: WE SET:

A 5/8 rebar with yellow plastic cap stamped 'Tomkins Surveying' which bears N 40°E ~ 29.08 from the corner. Attached a Umatilla County Bearing object to the west face of a railroad tie fence post. A 5/8 rebar with yellow plastic cap stamped 'Tomkins Surveying' which bears S 38°E ~ 31.29 feet from the corner. Attached a Umatilla County Bearing object to the west face of a railroad tie fence post. A 5/8 rebar with yellow plastic cap stamped 'Tomkins Surveying' which bears S 40°W ~ 25.11 feet from the corner. No Umatilla County Bearing object sign or t-post set. A 5/8 rebar with yellow plastic cap stamped 'Tomkins Surveying' which bears N 38°W ~ 30.66 feet from the corner. No Umatilla County Bearing object sign or t-post set.

Location & Comments:

Compass Declination:

19° East

Firm/Agency: Tomkins Land Surveying, Inc.
 20 E. Poplar, Suite 204
 Walla Walla, WA 99362

Party Chief: Bryan Martin
Notes: Bryan Martin
Witness: Eric Flowers

Surveyor's Seal

REGISTERED
 PROFESSIONAL
 LAND SURVEYOR

OREGON
 JULY 26, 1988
 PAUL W. P. TOMKINS
 2360

renewed 6/30/04
6/30/02

03-23-C