

# OREGON CORNER RESTORATION FORM

**Section:** 36  
**Township:** 6 North  
**Range:** 34 East of the Willamette Meridian  
**County:** Umatilla  
**Date:** June 1, 2002

**Corner Indexing Information:** Township 6N Range 34E Corner Code Z 25 (Willamette Meridian)

**Additional Identifier:** (e.g. BLM designation for the corner, street intersection, plat name, block, lot, etc.)

This corner is common to: Range 34E - Section 36 ~ Range 35E - Section 31. 5 N Range 34E Section 1 ~ 5N Range 35E - Section 6.

**Oregon Plane Coordinates:** N: 837874.016 E: 8711691.580

**Zone:** North **Order:** second **Datum:** NAD83-91 **Convergence:** 1°25'15" **Scale Factor:** .99994741

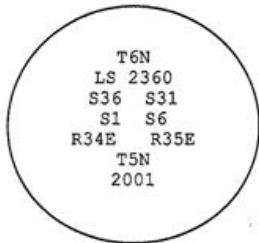
**Previous Renewals/Surveys, etc.:** This corner was originally set by U.S. Deputy Surveyors William Odell and William Lewis under their contract No. 110 dated February 7, 1865. The Surveyor General's notes state "set post corner, drove charred stake, dug pits and raised mounds per instructions". McComber, in 1902, refers to the corner, but does not identify the monument (Co. Survey Book 1, page 460). Tomkins Land Surveying, in 2000, sets a rebar with aluminum cap at the corner (Survey 00-161-C).

**Monument(s) & Accessories Found (Condition & Source):**

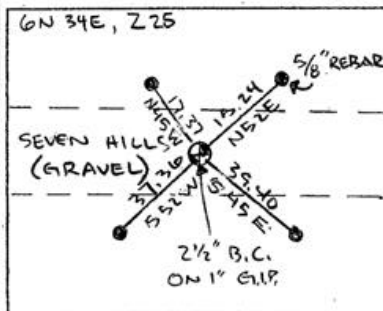
At the southeast corner T6N R34E, found a 5/8" iron rebar and 2" aluminum cap with an unstamped location marked "Tomkins Surveying WA5893 OR 2360" 4 inches below the surface of the gravel road.

**Monument Set (Procedures & Description):**

Set 1" x 30" flared end Galvanized Iron pipe with 2 1/2" brass cap stamped (see example below) subsurface gravel.



**Monument Detail:**



**New Accessories: WE SET:**

A 5/8 rebar with yellow plastic cap stamped 'Tomkins Surveying' which bears N 52°E ~ 15.24 feet from the corner. Set steel t-post along side and attached a Umatilla County Bearing Object Sign. A 5/8 rebar with yellow plastic cap stamped 'Tomkins Surveying' which bears S 45°E ~ 39.40 feet from the corner. Set steel t-post along side and attached a Umatilla County Bearing Object Sign. A 5/8 rebar with yellow plastic cap stamped 'Tomkins Surveying' which bears S 52°W ~ 37.36 feet from the corner. Set steel t-post along side and attached a Umatilla County Bearing Object Sign. A 5/8 rebar with yellow plastic cap stamped 'Tomkins Surveying' which bears N 45°W ~ 17.37 feet from the corner. Set steel t-post along side and attached a Umatilla County Bearing Object Sign.

**Location & Comments:**

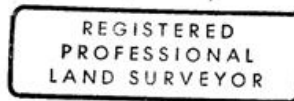
**Compass Declination:**

19° East

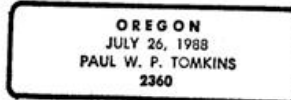
**Firm/Agency:** Tomkins Land Surveying, Inc.  
 20 E. Poplar, Suite 204  
 Walla Walla, WA 99362

**Party Chief:** Bryan Martin  
**Notes:** Bryan Martin  
**Witness:** Eric Flowers

**Surveyor's Seal**



*Paul W. P. Tomkins*



*renews 6/30/09*

*6/30/02*