

OREGON CORNER RESTORATION FORM

Section: 27, 28, 33 & 34
Township: 6 North
Range: 34 East of the Willamette Meridian
County: Umatilla
Date: June 1, 2002

Corner Indexing Information: Township 6N Range 34E Corner Code V 13 (Willamette Meridian)

Additional Identifier: (e.g. BLM designation for the corner, street intersection, plat name, block, lot, etc.)

This corner is common to sections 27, 28, 33 & 34.

Oregon Plane Coordinates: N: 842691.613 E: 8695784.908

Zone: North **Order:** second **Datum:** NAD83-91 **Convergence:** 1°22'36.5" **Scale Factor:** .99995374

Previous Renewals/Surveys, etc.: This corner was originally set by U.S. Deputy Surveyors William Odell and William Lewis under their contract No. 110 dated February 7, 1865. The Surveyor General's notes state "set post corner, drove charred stake, dug pits and raised mounds per instructions". As shown on County Survey No. 00-31-C, dated February 23, 2000, Paul Tomkins set a 5/8" x 30" iron rebar with a 2" aluminum cap by double proportion.

Monument(s) & Accessories Found (Condition & Source):

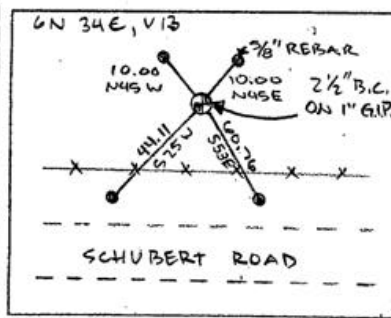
At the Southwest Corner of section 27, T6N R34E, found 2" aluminum cap 16" below the surface of the wheat stubble field.

Monument Set (Procedures & Description):

Replaced a 2" aluminum cap with 1" x 30" flared end galvanized pipe with 2 1/2 brass cap stamped (see example below).

T6N R34E
 LS 2360
 28 27
 33 34
 2001

Monument Detail:



New Accessories: WE SET:

A 5/8 rebar with yellow plastic cap stamped 'Tomkins Surveying' which bears N 45°E ~ 10.00 feet from the corner 14" below the surface with no plate or t-post set. A 5/8 rebar with yellow plastic cap stamped 'Tomkins Surveying' which bears S 53°E ~ 60.76 feet from the corner. At the surface, attached a Umatilla County Bearing Object Sign to the South side of Locust Fence Post. A 5/8 rebar with yellow plastic cap stamped 'Tomkins Surveying' which bears S 25°E ~ 44.11 feet from the corner. 6" above the surface, attached a Umatilla County Bearing Object Sign to the South side of Locust Fence Post. A 5/8 rebar with yellow plastic cap stamped 'Tomkins Surveying' which bears N 45°W ~ 10.00 feet from the corner 16" below the surface with no plate or t-post set.

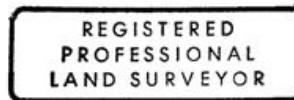
Location & Comments:

Compass Declination:

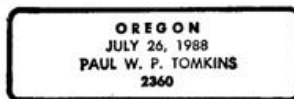
19° East

Surveyor's Seal

Firm/Agency: Tomkins Land Surveying, Inc.
 20 E. Poplar, Suite 204
 Walla Walla WA 99362



Paul W. P. Tomkins



*renews 6/30/04
6/30/02*

03-23-C