

OREGON CORNER RESTORATION FORM

COUNTY: Umatilla. DATE: 04/29/09

CORNER DESIGNATION: V-13, The Southeast Corner of Section 28, Township 6 North, Range 33 East, W.M.

PREVIOUS RENEWALS/SURVEYS ETC.: Corner originally established by Walden under GLO Contract No. 209, dated July 6, 1874. Notes state: Set basalt stone, 14 x 10 x 5, 7 ins. in ground, for Cor. to Secs. 27, 28, 33 & 34.

MONUMENT AND ACCESSORIES FOUND: Found original stone, 14 x 10 x 7 inches, set under a East-West fence line. Faint grooves visible on stone.

MONUMENT MARKING DETAIL:

T6N R33E
S28 | S27
S33 | S34
2009
PLS 1106

MONUMENT SET: At the position of the found stone, set a 2 3/8" diameter brass cap on a 1 1/4" x 30" galvanized iron pipe, 29" in the ground, marked as shown in "Monument Marking Detail". Deposited original stone on North side of new monument.

New accessories:

A silver Deep-1 magnet, bears North 30° East, a distance of 10.4 feet, buried 12 inches.

A pink Deep-1 magnet, bears South 54° East, a distance of 11.1 feet, buried 12 inches.

A 1 1/4" red plastic cap marked "OR PLS 1106, WA PLS 17372", on a 5/8" by 30" rebar bears South 46° West, a distance of 11.4 feet.

A 1 1/4" red plastic cap marked "OR PLS 1106, WA PLS 17372", on a 5/8" by 30" rebar bears North 42° West, a distance of 17.0 feet.

Rebar accessories have bearing object signs attached. Set a steel fence post 3 feet North of corner with witness sign.

LOCATION AND COMMENTS: Monument located in a East-West fence line.

OREGON STATE PLANE COORDINATE, North Zone, NAD 83(91), International Feet:

N = 843005.09

E = 8664009.24

FIRM: Wells Surveying

P.O. Box 1696

Pendleton, OR 97801

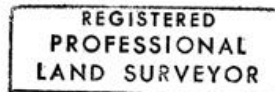
COMPASS DECLINATION: 18° East

Surveyor's Seal

Witnesses: Matt Brockamp

D. Palmer

\6N33V13



William R. Wells
OREGON
JULY 22, 1977
WILLIAM R. WELLS
1106

renews 6-30-10