

# OREGON CORNER RESTORATION FORM

Section: 30  
Township: 6 North  
Range: 34 East of the Willamette Meridian  
County: Umatilla  
Date: June 1, 2002

Corner Indexing Information: Township 6N Range 34E Corner Code T 1 (Willamette Meridian)  
Additional Identifier: (e.g. BLM designation for the corner, street intersection, plat name, block, lot, etc.)

### Oregon Plane Coordinates: N:

845142.203 E: 8679717.565

Zone: North Order: second Datum: NAD83-91 Convergence: 1°19'55.9"

Scale Factor: .99995481

### Previous Renewals/Surveys, etc:

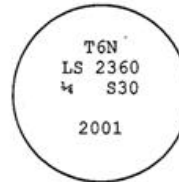
Corner was originally set by Odell in 1865 as a charred stake, mounds and pits. In 1919, Perry shows a granite rock (Co. surveyor book, page 307.) In 2001, Tomkins Land Surveying found a granite stone in a small cairn of basalt stones. (Surveys 01-168-c)

### Monument(s) & Accessories Found (Condition & Source):

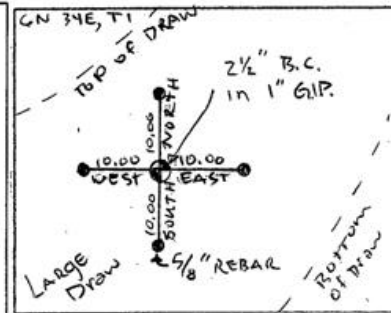
At the west quarter corner of section 30, T6N R34E, found granite stone with no marks in a cairn 1.5 feet radius and 1.0 foot in height.

### Monument Set (Procedures & Description):

At the location of the found stone, set 1"x30" galvanized pipe with 2 1/2" brass cap stamped in cairn (see example below). Buried inverted stone along of North side of Monument.



### Monument Detail:



### New Accessories: WE SET:

A 5/8 rebar with yellow plastic cap stamped 'Tomkins Surveying' which bears West ~ 10.00 feet from the corner. Attached a Umatilla County Bearing Object Sign to rebar and placed into bedrock with small cairn. A 5/8 rebar with yellow plastic cap stamped 'Tomkins Surveying' which bears North ~ 10.00 feet from the corner. Attached a Umatilla County Bearing Object Sign to rebar and placed into bedrock with small cairn. A 5/8 rebar with yellow plastic cap stamped 'Tomkins Surveying' which bears East ~ 10.00 feet from the corner. Attached a Umatilla County Bearing Object Sign to rebar and placed into bedrock with small cairn. A 5/8 rebar with yellow plastic cap stamped 'Tomkins Surveying' which bears South ~ 10.00 feet from the corner. Attached a Umatilla County Bearing Object Sign to rebar and placed into bedrock with small cairn.

### Location & Comments:

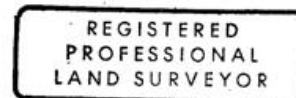
### Compass Declination:

19° East

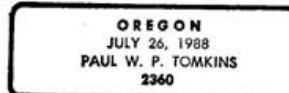
Firm/Agency: Tomkins Land Surveying, Inc.  
20 E. Poplar, Suite 204  
Walla Walla, WA 99362

Party Chief: Bryan Martin  
Notes: Bryan Martin  
Witness: Eric Flowers

### Surveyor's Seal



*Paul W. P. Tomkins*



renews 6/30/04  
6/30/02