

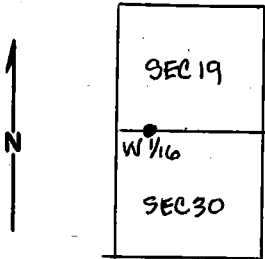
USDA-FOREST SERVICE

Index R-2
 File No. _____
 T 5S R. 31E
 Merid. Willamette

CORNER RECORD (SEARCH)
 (Ref. FSM 7151.4)

Tract or Survey No. Sec 30 Cor. No. W 1/16
 R.D. Ukiah County Umatilla
 N.F. Umatilla State Oregon

CORNER DIAGRAM



T5S R.31E W.M.

DESCRIBE CORNER MONUMENT FOUND

None

DESCRIBE BEARING TREES OR OTHER OFFICIAL ACCESSORIES FOUND

None

DESCRIBE CORNER LOCATION RELATIVE TO NEAR-BY FEATURES, ALSO HOW TO REACH CORNER

Corner located at break in crown on West edge of ridge in young mixed timber.

PHOTO IDENTIFICATION DATA

Photo No. _____
 Filed At. _____
 Object Ident. _____
 Ident. By _____
Signature

PLANE COORDINATE POSITION DATA

State _____ Zone _____
 X _____
 Y _____
 Estab. By _____
Agency

Signature
 William R. Wells

PLS #106

Division

Headquarters

8/9/79

7100-52-(3/68)

CORNER RECORD (PERPETUATION)

MONUMENT: DESCRIBE NEW MONUMENT SET, OR WORK DONE TO PRESERVE EXISTING MONUMENT

Set a 2" x 30" galvanized iron pipe with a brass cap 15" in ground with a mound of stones to cap marked:

Set steel fence post on property line North of Corner and attached signs 54-2 and 54-9.

T5S R31E
w/ 1/16 S19
330
1979
PLS1106

9

ACCESSORIES: DESCRIBE NEW BT'S WITNESS OBJECTS ETC. ESTABLISHED, OR WORK DONE TO PRESERVE EXISTING EVIDENCE

A 7" red fir bears S8°E 17.9 ft. to center scribed W 1/16 S 30 BT.

A 8" Tamarack bears N80°W 15.9 ft. to center, scribed W 1/16 S19 BT.

BT's have a lower blaze scribed BT with a brass marker stamped PLS 1106 nailed flush.

Attached signs 54-3 and 54-4 and painted red ring around BTS.

10

Work Done By William R. Wells Title PLS Date 8/12/79 State Registration No. 1106
or Agency

Certified Cor. Record Prepared? Yes No Filed At: Umatilla County Surveyor's Office Date

11

REMARKS

NOTE: This corner was erroneously established in 7/79 and bearing trees established. When the corner was established in its true position, scribing and signs were removed from the BT's referencing the erroneous position. From the correct corner positions: A 11" red fir bears N83°E 117.7 feet with open blaze. A 9 1/2" red fir bears East 96.5 feet with open blaze.

12