

**OREGON CORNER RESTORATION FORM**

COUNTY: Umatilla      DATE: February 28, 2005

CORNER DESIGNATION: A-9 Northeast Corner Section 5, T. 5 North,  
Range 36 E.W.M.

**PREVIOUS RENEWALS/SURVEYS ETC.**

Odell and Lewis set post, dug pits, and raised mound (Contract No. 110, dated Gebruary 7th, 1865).

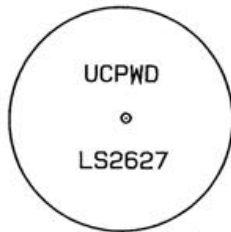
John Kimbrell set iron pin in 1899 survey for George Delaney (Book 1, Pages 402-404, Record of Private Surveys).

John Arnold surveyed in Road No. 299 along Township line (no call to this corner)

**MONUMENT AND ACCESSORIES FOUND:**

Found an old iron pipe 1 1/4" I.D. x 22 1/2" long lying on its side about 8" deep and 20 feet southeast of the corner monument set in this survey. The significance of the pipe is unknown but it matches the length and type of monument set by Kimbrell in a survey done 4 days earlier to the east of this location. There was also evidence of ferrous material (possibly rust) at the location I set the corner monument.

**MONUMENT MARKING DETAIL:**



**OREGON STATE PLANE COORDINATES,  
NORTH ZONE, NAD '83 ('91), INT. FEET:**

NORTH: 838, 978.84

EAST: 8, 754, 089.52

**MONUMENT SET (PROCEDURES AND DESCRIPTION):**

Accepted the intersection of the center of the gravel road and a north-south plow line to the south as the best evidence of the corner location and set a 5/8" x 30" iron rebar with yellow plastic cap marked "UCPWD...LS2627" 4" below the road surface.

**NEW ACCESSORIES:**

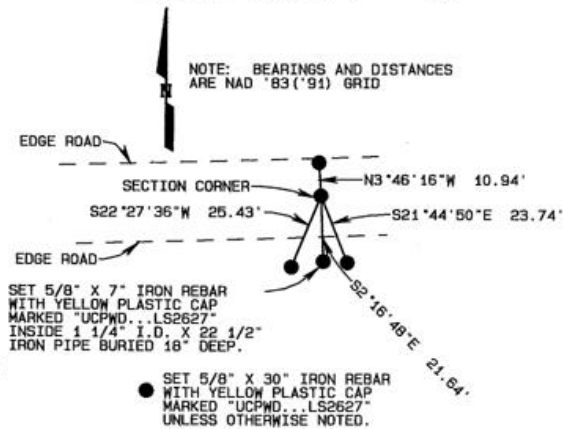
The 1 1/4" X 22 1/2" iron pipe was buried 18" deep and a 5/8" X 7" iron rebar with yellow plastic cap marked "UCPWD...LS2627" was driven in the top. The center of the cap bears S2°16'48"E, 21.64' from corner. A bearing object tag and "DO NOT DISTURB" sign are nailed to a line post 0.7' southwesterly of the pipe.

A 5/8" X 30" iron rebar with yellow plastic cap marked "UCPWD...LS2627" bears S22°27'36"W, 25.43' from corner. A bearing object tag is wired to the monument.

A 5/8" X 30" iron rebar with yellow plastic cap marked "UCPWD...LS2627" and buried 3" below road surface bears N3°46'16"W, 10.94' from corner.

A 5/8" X 30" iron rebar with yellow plastic cap marked "UCPWD...LS2627" bears S21°44'50"E, 23.74' from corner. A bearing object tag is wired to the monument.

**SKETCH: SCALE 1" = 50'**



**LOCATION AND COMMENTS:**

From the intersection of Spofford Road and Whiteman Road, travel east on Whiteman Road approximately 1/4 mile to corner.

**COMPASS DECLINATION:**

N/A

**FIRM/AGENCY:**

Umatilla County Road Dept.  
3920 Westgate  
Pendleton, Oregon 97801

**PARTY CHIEF:**

Gary Roberts

**NOTES:**

**WITNESS:**

**SURVEYOR'S SEAL**

REGISTERED  
PROFESSIONAL  
LAND SURVEYOR

*Gary R. Roberts*  
OREGON  
JULY 30, 1993  
GARY R. ROBERTS  
2627

RENEWS 12/31/06

05-051-C