

OREGON CORNER RESTORATION FORM

Section 36 Township 5 N Range 34 E

2-25

County Umatilla Date 1-27-88

CORNER DESIGNATION

- Condition Report Only
- Not Found
- Renewed
- Unrecorded
- Surveyed In
- Referenced Out

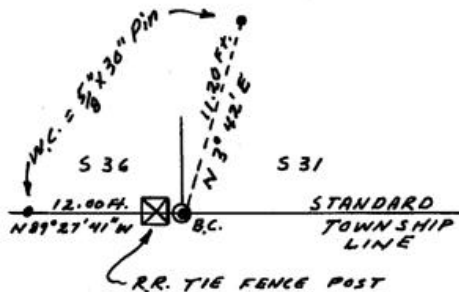
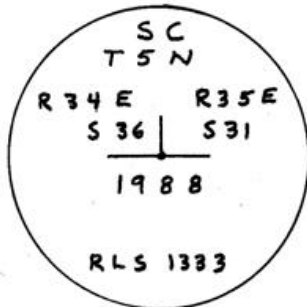
Previous Renewals/Surveys, etc. Originally a post, pits, and mounds (1865)

Monument(s) & Accessories Found: (Condition and Source)

Found old fence line and plowline running west and plowline running north from an old RR tie fence post marking the section corner location. The RR tie fence corner post was used in the Krumbein survey, Map # M-27-B.

Monument Detail

Sketch



Monument Set (Procedures and Description)

Set 1" x 30" G.I.P. w/flared base and 2 1/2" brass cap 6" above the ground abutting the east face of a wood R.R. tie fence post. Witness monuments are referenced from true position of section corner not the B.C. The B.C. is 0.08 ft. east of true position

New Accessories

A witness monument bears N 89° 28' W - 12.00 Ft.
A witness monument bears N 3° 42' E - 11.20 Ft.
Witness monuments are 5/8" x 30" rebar with red plastic caps marked R.L.S. 1333. Set steel fence post near each W.C. and B.C. with yellow witness signs attached.

Location & Comments

Corner is located in wheat field Compass Declination _____
Firm/Agency Don Staebler

Engineer - Surveyor

Address 1532 S. W. 41st

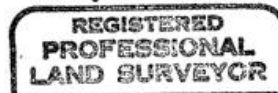
Pendleton, OR 97801

Party Chief Don Staebler

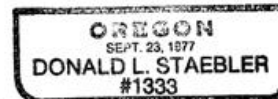
Notes _____

Witness _____

Surveyor's Seal



Donald L. Staebler



RECEIVED BY _____
Umatilla County Surveyor
Date 2-88
Rec'd By RA
No. 88-9-A