

OREGON COUNTY RESTORATION FORM

Section 31.32 Township 5N Range 31E
 County Umatilla Date: 11-05-2006

Corner Designation: 5N31E Z5

Condition Report Only
 Not Found
 Remonumented
 Unrecorded
 Surveyed In
 Referenced Out

Previous Renewals / Surveys, etc.

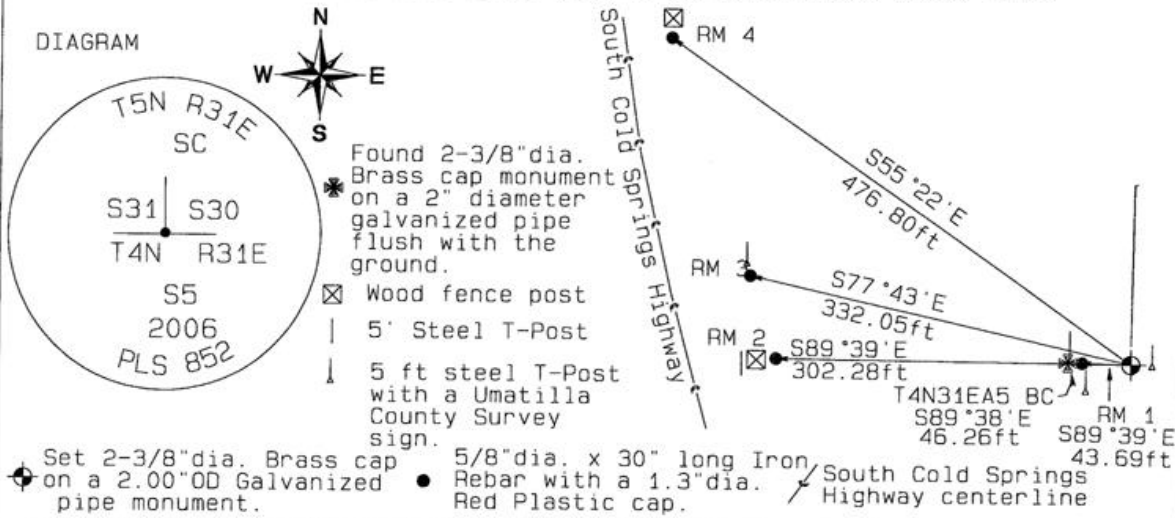
08-1865 W.Odell/Lewis STD PARALLEL (110) "Set post Standard corner for Sec 31 & 32. Drove charred Stake and Raised Mound with pits as per instructions."
 01-1867 W.Odell GLO Subdv (114) "Intersected 1st Standard parallel North 77 links West of Post Standard corner for sections 31 & 32 T5N R31E. At point of intersection set Closing corner for sections 5 + 6 drove charred stake dug pits, and raised mound as per instructions." ---SUBDIVISION OF T4NR31E---
 12-1874 N.Walden Resurvey (209) "A point-23 lks. West-and 86 lks.North of the corner to Secs.31 + 32"
 10-1907 J.Kimbrell (#257) Book2 pg 62. "the Standard corner of sec 31 & 32"

** Note: T5NR31EZ5 corner referred by the following surveys is found to be the closing corner T4NR31EA5. (see note below and filed certification) **

- 05-1974 D.Krumbein (I-25-B) "FND FENCE COR SET BRASS CAP"
- 06-1974 D.Krumbein (I-24-B) "FND FENCE COR SET BRASS CAP"
- 06-1974 D.Krumbein (I-167-B) "FND FENCE COR SET BRASS CAP"
- 05-1980 W.Kimmel BLM (83-195-B) "...monumented with an iron post, 2 ins. diam., firmly set, projecting 6 ins. above ground, with brass cap mkd."
- 06-2006 D.Haddock (06-263-C) "FND BRASS CAP"

Monument and Accessories Found: (condition and source)

Searched for and did not find fence post or corner. Plowed field line.



MONUMENT(S) AND ACCESSORIES SET (Procedures and Description)
 Set a 5 ft steel T-Post with a Umatilla County Survey Marker sign 24" East of monument facing East.

REFERENCES SET:

Utilized T4NR31EA5 RM Iron pins. Set 4 bearing object signs for corner. to the bearings and distances from monument shown above in the sketch.

Made GPS tie to TRI Stations	Oregon State Plane Coord. - North Zone.
LAURILA RESET RB 1379 and	Northing 804538.86
WALLS RB 1396	Easting 8590747.81
Latitude 45°51'48.15079"N	Ortho Height 1108.00
Longitude 118°58'27.76895"W	Ellipsoidal Height 1039.10
NAD 83(1991)	

Location and Comments
 The 7 chain call by Odell in 1865 to the Std Corner and with the distances by J.Kimbrell in 1907 verified this as the Std Corner. The corner set by W.Harris in 1974 is the location of the closing corner for T4NR31EA5.

Proceed from the Jct of Hwy 37 and South Cold Sprngs Highway 2.00 miles South East on South Cold Springs Highway. Corner is North of the Highway 275 feet up the plowed field. Mile-post 23-1/4.

RECEIVED BY: D/HK
 Date: 02-07
 Rec'd By: D/HK
 No.:

Firm / Agency
 Haddock Surveying
 P. O. Box 1574
 Pendleton, OR 97801
 (541) 276-2174

Surveyors Seal
 REGISTERED PROFESSIONAL LAND SURVEYOR
 David L Haddock
 OREGON
 JULY 12, 1968
 DAVID L. HADDOCK
 852
 RENEWS 6-30-07

200
 07-199-R