

OREGON CORNER RESTORATION FORM

Section 36.31 Township 5N Range 31E
 County Umatilla Date: 05-08-2006

Corner Designation: 5N31E X1

Condition Report Only
 Not Found
 Remonumented
 Unrecorded
 Surveyed In
 Referenced Out

Previous Renewals / Surveys, etc.

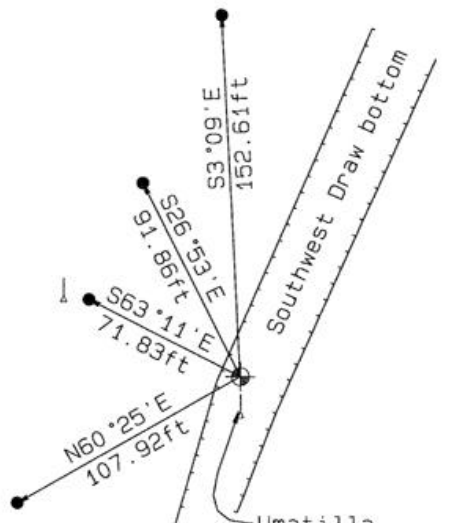
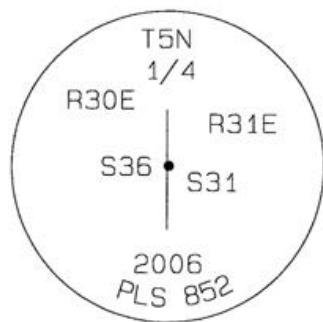
08-1859 D.Thompson GLO (81) "Set post for 1/4 Sec corner and build mound of Earth with pits & trench and charcoal as per instructions"

05-1980 W.Kimmel BLM (83-195-B) North - South line shown on survey.

Monument and Accessories Found: (condition and source)

Searched for and did not find post or evidence. Plowed field.

DIAGRAM



Edge of draw bottom

5' Steel T-post

Set 2-3/8" dia. Brass cap on a 1-1/2" x 30" long Galvanized pipe monument.

5/8" dia. x 30" long Iron Rebar with a 1.3" dia. Red plastic cap.

Umatilla County Survey Monument sign.

MONUMENT(S) AND ACCESSORIES SET (Procedures and Description)

Set a 2-3/8" dia. Brass Capped monument (stamped as shown) on a 1-1/4" ID x 30" long galvanized pipe 2" above the ground surface.
 Set a 5' steel t-post with Umatilla County Survey Marker sign 1 foot South of monument facing South.

REFERENCES SET:

Set four (5/8" dia x 30" long Iron rebar with a 1.3" dia. Red plastic cap) to the bearings and distances from monument shown above in the sketch.

Made GPS tie to TRI Stations LAURILA RESET RB 1379 and WALLS RB 1396
 Latitude 45°52'15.52908"N
 Longitude 118°59'43.10504"W
 NAD 83(1991)

Oregon State Plane Coord. - North Zone
 Northing 807225.32
 Easting 8585363.57
 Ortho Height 1038.29
 Ellipsoidal Height 976.96

Location and Comments

Compass Declination

Surveyors Seal

18°E

Proceed from the junction of HWY 37 and South Cold Springs Highway Southeast on S. Cold Springs Hwy (Umatilla County Rd # 850) approximately 0.56 miles to the South field access road, proceed South on the field access road 780 feet to the "Y" junction. Thence along the East fork approx. 0.67 miles South to the ravine junction. Proceed Southwest 0.33 miles down the draw to the 1/4 corner.

REGISTERED PROFESSIONAL LAND SURVEYOR

RECEIVED BY:

Firm / Agency

David L. Haddock

Date 02-07

Rec'd By: *DH*

No.: 07-212-R

Haddock Surveying
 P. O. Box 1574
 Pendleton, OR 97801
 (541) 276-2174

OREGON
 JULY 12, 1968
 DAVID L. HADDOCK
 852

RENEWS 6-30-07