

OREGON COUNTY CORNER RESTORATION FORM

Section 30.31 Township 5N Range 31E  
 County Umatilla Date: 05-08-2006  
 Corner Designation: 5N31E V3

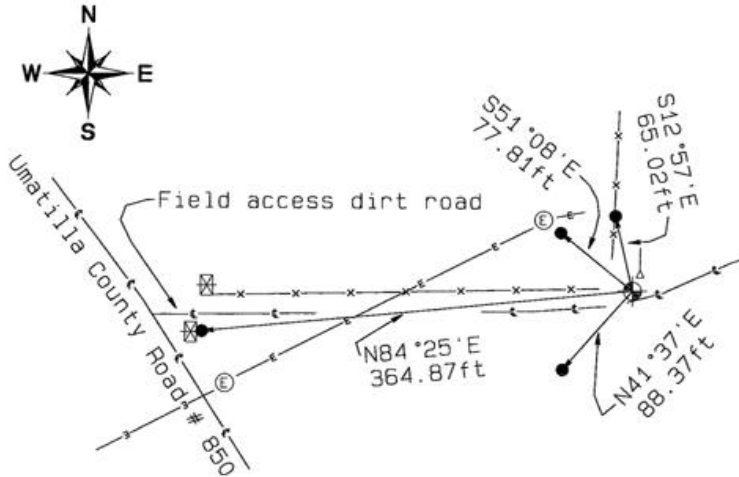
Condition Report Only  
 Not Found  
 Remonumented  
 Unrecorded  
 Surveyed In  
 Referenced Out

Previous Renewals / Surveys, etc.

10-1874 N.Walden Subdv (209) "Deposit Basalt Stone 6x5x3 marked with a cross (+) and raise mound of Earth with pits & charcoal as per instructions for 1/4 Sec. Cor."

Monument and Accessories Found: ( condition and source )  
 Searched for and did not find stone.

DIAGRAM



- ⊙ 10"dia. Wood power pole
- 5/8"dia. x 30" long Iron Rebar with a 1.3"dia. Red plastic cap.
- ⊕ Set 2-3/8"dia. Brass cap on a 1-1/2" x 30" long Galvanized pipe monument.
- Wire Fence line
- ⊗ Wood fence post
- ⊠ RR Tie posts.
- ↓ 5ft Steel Tpost w/ UCSM sign facing West

MONUMENT(S) AND ACCESSORIES SET (Procedures and Description)  
 Set a 2-3/8"dia.Brass Capped monument (stamped as shown) on a 1-1/4"ID x 30"long galvanized pipe flush with the ground surface.  
 Set a Umatilla County Survey Marker sign facing West toward Umatilla County Road # 850 (South Fork Cold Springs Canyon road).

REFERENCES SET:

Set four (5/8" dia x 30" long Iron rebar with a 1.3" dia. Red plastic cap) to the bearings and distances from monument shown above in the sketch.

Made GPS tie to TRI Stations LAURILA RESET RB 1379 and WALLS RB 1396 Latitude 45°52'41.77650"N Longitude 118°59'05.71962"W NAD 83(1991)	Oregon State Plane Coord. - North Zone Northing 809919.14 Easting 8587960.69 Ortho Height 1004.68 Ellipsoidal Height 935.61
--	---

Location and Comments	Compass Declination 18°E	Surveyors Seal
-----------------------	-----------------------------	----------------

Proceed from the junction of HWY 37 and South Cold Springs Highway Southeast on S. Cold Springs Hwy (Umatilla County Rd # 850) approximately 1.0 miles to a West field access road. Thence 364 feet West to the corner.

REGISTERED  
PROFESSIONAL  
LAND SURVEYOR

*David L. Haddock*

OREGON  
JULY 12, 1968  
DAVID L. HADDOCK  
852

RECEIVED BY:

Firm / Agency

Date 02-07  
 Rec'd By: DKK  
 No.: 07-11-B

Haddock Surveying  
 P. O. Box 1574  
 Pendleton, OR 97801  
 (541) 276-2174

RENEWS 6-30-07