

OREGON CORNER RESTORATION FORM

SECTION 18 TOWNSHIP 5 NORTH RANGE 28 EAST

L-5

COUNTY : UMATILLA DATE 6/04

CORNER DESIGNATION

EAST 1/4 CORNER SECTION 18

CONDITION REPORT ONLY

NOT FOUND

RENEWED

UNCOVERED

SURVEYED IN

REFERENCED

PREVIOUS RENEWALS / SURVEYS, ETC.

ORIGINAL GLO SURVEY BY DAVENPORT UNDER CONTRACT #101 IN 1861. SET POST WITH MOUND AND CHARRED STAKE.

KIMBRELL REESTABLISHED IN 1907 SURVEY # 251 PG. 49. SET IRON BOLT.

EDWARDS REMONUMENTED IN 1991 SURVEY # 91-01-B. SET 2 3/8" BRASS CAP AND ACCESSORIES.

WELLS RECOVERED THE MONUMENT AND REFERENCED SAME IN 1998 SURVEY # 98-101-C.

MONUMENTS AND ACCESSORIES FOUND: CONDITION AND SOURCE

A 2 3/8" BRASS CAP (SEE MONUMENT DETAIL)

AN ALUMINUM TAG "#951" ON A GUARD POST LIES S 57°27'17" E, 44.83 FEET.

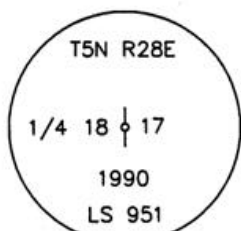
AN ALUMINUM TAG "#951" ON A LIGHT POLE LIES N 30°47'27" W, 125.57 FEET.

A STEEL FENCE POST LIES S 81°51'00" W, 2.10 FEET.

A BRASS WASHER "PLS 1106" IN A 12" LOCUST TREE LIES N 76°00'00" E, 79.33 FEET.

A 3" DIAM. STEEL PIPE LIES S 77°00'00" W, 95.17 FEET.

MONUMENT DETAIL

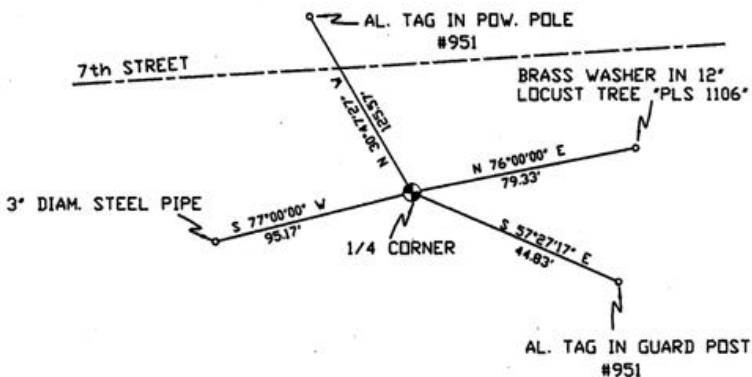


NAD 83/91
OREGON STATE PLANE
INTERNATIONAL FEET

821901.69
8495051.25



SKETCH



MONUMENT SET (PROCEDURES AND DESCRIPTION)

NEW ACCESSORIES FROM WHICH

LOCATION AND COMMENTS

CORNER FALLS ± 140 FEET SOUTH OF 7th STREET BETWEEN B AND C STREETS.

COMPASS DEC.

FIRM/AGENCY
PRIMM LAND SURVEYING LLC
P.O. BOX 1322
HERMISTON, OREGON 97838

PARTY CHIEF
KEITH P. PRIMM

NOTES

WITNESS
BRIT L. PRIMM

SURVEYOR'S SEAL

REGISTERED
PROFESSIONAL
LAND SURVEYOR

Brit L. Primm
OREGON
JULY 13, 1999
BRIT L. PRIMM
48509

EXPIRATION DATE: 12/31/04

Aug/18/04

04-155-B