

OREGON CORNER RESTORATION FORM

COUNTY: Umatilla Date: April 3, 2013

CORNER DESIGNATION: H-J9 Witness Corner for the Meander Corner of Sections 8 & 9, Township 5 North, Range 28 E. W.M.

PREVIOUS RENEWALS/SURVEYS ETC.

1861 GLO survey by Timothy W. Davenport, set a charred stake in a mound.
1943 GLO survey by Norman D. Price, set an iron post, 3 ft. long, 1 in. diam., 28 ins. in the ground, for meander cor. of frac. secs. 8 and 9, with brass cap.

Record of Survey, PLS 64248, recorded as Umatilla County Surveyor No. 13-129-B on 3/27/13.

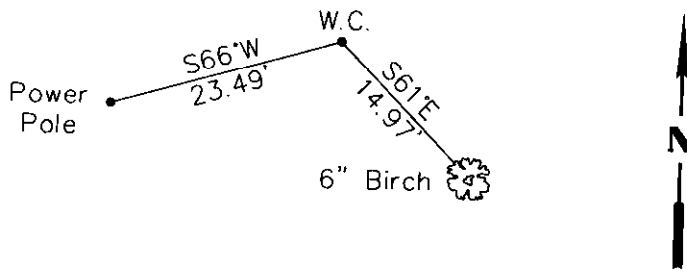
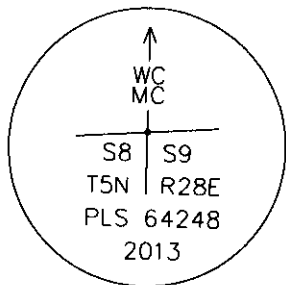
MONUMENT AND ACCESSORIES FOUND:

No evidence found. Falls in marina water.

MONUMENT SET:

Set a 3/4" Aluminum cap on a 5/8" Rebar for witness corner to original M.C. corner monument, 0.3' below ground.

MONUMENT MARKING DETAIL:



NEW ACCESSORIES:

- A 6" Birch with plastic shiner marked "HODGE PLS 64248" bears S61°E, 14.97' dist.
- A Power pole with plastic shiner marked "HODGE PLS 64248" bears S66°W, 23.49' dist.
- A Carsonite W/Survey marker decal bears North 1.0' dist.

LOCATION AND COMMENTS: N/A

COMPASS DECLINATION: 15° E

FIRM/AGENCY: Columbia Surveys, PLLC
303 Church Street
Sandpoint, ID 83864

PARTY CHIEF: S. Jeske

NOTES: N/A

WITNESS: B. Staples

REGISTERED
PROFESSIONAL
LAND SURVEYOR

[Signature]
 OREGON
 SEPTEMBER 25 2000
 RONALD M. HODGE
 64248

04-11-2013
RENEWAL DATE: JUNE 30 2013

RECEIVED BY
 Umatilla County Surveyor
 Date: 3/15/13
 Rec'd By: S. Alex
 No.: 13-129-B