

# OREGON CORNER RESTORATION FORM

SECTION 25 TOWNSHIP 5 NORTH RANGE 27 EAST

V-25

COUNTY : UMATILLA DATE 5/06

CORNER DESIGNATION

SE CORNER SECTION 25

CONDITION REPORT ONLY

NOT FOUND

RENEWED

UNCOVERED

SURVEYED IN

REFERENCED

PREVIOUS RENEWALS / SURVEYS, ETC.

ORIGINAL GLO SURVEY BY DAVENPORT UNDER CONTRACT #101 IN 1861. SET POST WITH MOUND AND CHARRED STAKE.

EDWARDS FOR UMATILLA COUNTY 1990 SURVEY NO. 91-01-B

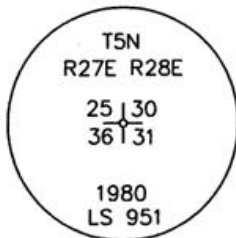
STAEBLER FOR STONE 1972 SURVEY NO. H-106-B

MONUMENTS AND ACCESSORIES FOUND: CONDITION AND SOURCE

2 1/2" B.C. SECTION CORNER

MONUMENT DETAIL

FND. 2 1/2" B.C.

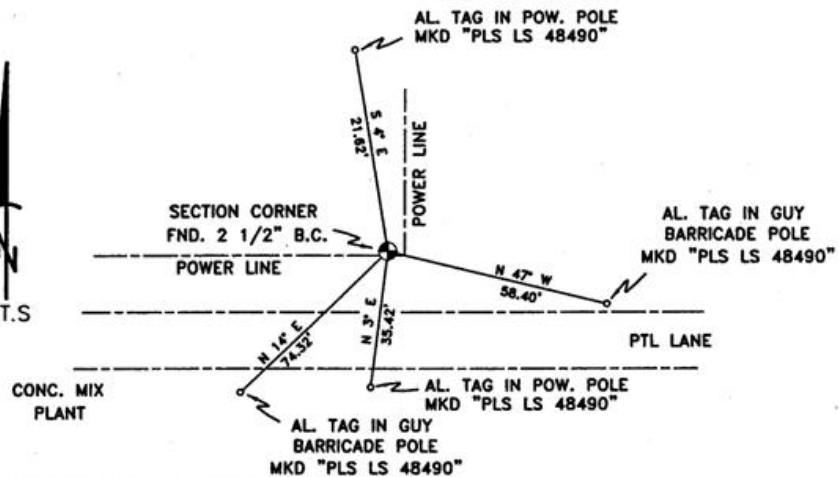


NAD 83/91  
OREGON STATE PLANE  
INTERNATIONAL FEET

N 808680.0529  
E 8489915.9305



SKETCH



MONUMENT SET ( PROCEDURES AND DESCRIPTION )

NEW ACCESSORIES FROM WHICH

- AN ALUMINUM TAG "PLS LS 48490" ON A POWER POLE LIES N 4° W, 21.62 FEET.
- AN ALUMINUM TAG "PLS LS 48490" ON A GUY BARRICADE POLE LIES S 47° E, 58.40 FEET.
- AN ALUMINUM TAG "PLS LS 48490" ON A POWER POLE LIES S 3° W, 35.42 FEET.
- AN ALUMINUM TAG "PLS LS 48490" ON A GUY BARRICADE POLE LIES S 14° W, 74.32 FEET.

LOCATION AND COMMENTS

FROM THE INTERSECTION OF POWER LINE ROAD AND PTL LANE GO WEST 1.1 MILES TO CORNER.

COMPASS DEC.

17.5 DEG EAST

FIRM/AGENCY

PRIMM LAND SURVEYING LLC  
1340 N.E. 4TH P.O. BOX 1322  
HERMISTON, OREGON 97838

PARTY CHIEF

BRIT L. PRIMM

NOTES

WITNESS

KEITH P. PRIMM  
JOE L. PRIMM

SURVEYOR'S SEAL

REGISTERED  
PROFESSIONAL  
LAND SURVEYOR

*Keith P. Primm*

OREGON  
JULY 12, 2005  
KEITH P. PRIMM  
48490

EXPIRATION DATE: 12/31/06

06-461-B