

OREGON CORNER RESTORATION FORM

SECTION 23 TOWNSHIP 5 NORTH RANGE 27 EAST

R-21

COUNTY : UMATILLA DATE 5/06

CORNER DESIGNATION

SE CORNER SECTION 23

CONDITION REPORT ONLY

NOT FOUND

RENEWED

UNCOVERED

SURVEYED IN

REFERENCED

PREVIOUS RENEWALS / SURVEYS, ETC.

ORIGINAL GLO SURVEY BY DAVENPORT UNDER CONTRACT #101 IN 1861. SET POST WITH MOUND AND CHARRED STAKE.

EDWARDS FOR UMATILLA COUNTY 1990 SURVEY NO. 91-01-B

KRUMBEIN FOR BAKER-ROGERS 1973 SURVEY NO. 1-16-C

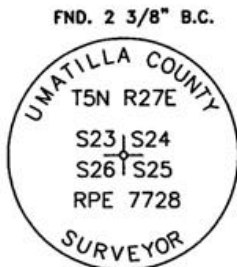
MONUMENTS AND ACCESSORIES FOUND: CONDITION AND SOURCE

2 3/8" BRASS CAP SECTION CORNER STAMPED RPE 7728

2 3/8" BRASS CAP WITNESS CORNER LIES N 5' E, 34.46 FEET.

FND. 2 3/8" B.C. W.C.

MONUMENT DETAIL



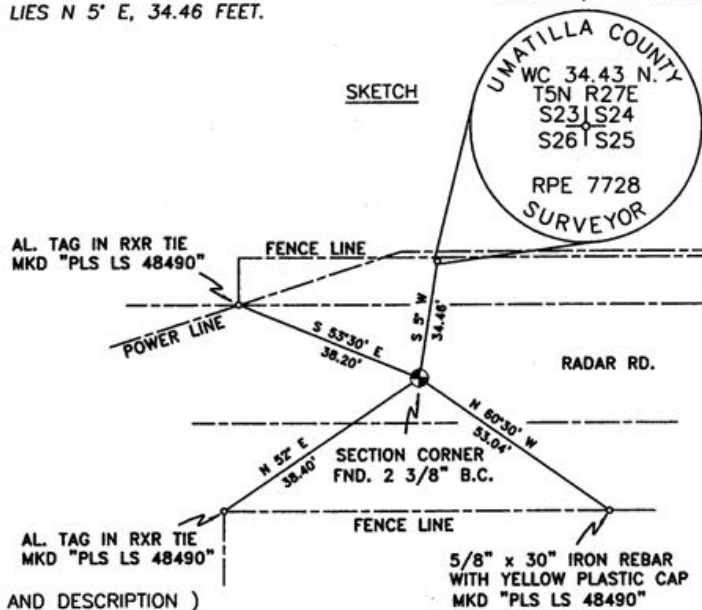
NAD 83/91
OREGON STATE PLANE
INTERNATIONAL FEET

N 813857.0566
E 8484586.1944

N.T.S.

MONUMENT SET (PROCEDURES AND DESCRIPTION)

SKETCH



NEW ACCESSORIES FROM WHICH

AN ALUMINUM TAG "PLS LS 48490" ON A RXR TIE LIES N 53'30' W, 38.20 FEET.

AN ALUMINUM TAG "PLS LS 48490" ON A RXR TIE LIES S 52' W, 38.40 FEET.

A 5/8" x 30" IRON REBAR WITH A YELLOW PLASTIC CAP MKD "PLS LS 48490" LIES S 60'30' E, 53.04 FEET.

LOCATION AND COMMENTS

FROM THE INTERSECTION OF POWER LINE ROAD AND RADAR ROAD, GO WEST 2.2 MILES ALONG RADAR ROAD. CORNER FALLS IN CENTER OF RADAR ROAD.

COMPASS DEC.

17.5 DEG EAST

FIRM/AGENCY

PRIMM LAND SURVEYING LLC
1340 N.E. 4TH P.O. BOX 1322
HERMISTON, OREGON 97838

PARTY CHIEF

BRIT L. PRIMM

NOTES

WITNESS

KEITH P. PRIMM
JOE L. PRIMM

SURVEYOR'S SEAL

REGISTERED
PROFESSIONAL
LAND SURVEYOR

OREGON
JULY 12, 2005
KEITH P. PRIMM
48490

EXPIRATION DATE: 12/31/06

06-461-B