

OREGON CORNER RESTORATION FORM

SECTION 15 TOWNSHIP 5 NORTH RANGE 27 EAST

N-17

COUNTY : UMATILLA DATE 5/06

CORNER DESIGNATION

SE CORNER SECTION 15

CONDITION REPORT ONLY

NOT FOUND

RENEWED

UNCOVERED

SURVEYED IN

REFERENCED

PREVIOUS RENEWALS / SURVEYS, ETC.

ORIGINAL GLO SURVEY BY DAVENPORT UNDER CONTRACT #101 IN 1861. SET POST WITH MOUND AND CHARRED STAKE.

TOMPSON FOR SIMMONS 1967 SURVEY NO. D-43-AX

KRUMBEIN FOR DACK 1975 SURVEY NO. J-102-A

EDWARDS FOR KENNEY 1979 SURVEY NO. R-19-C

EDWARDS FOR SWANSON 1977 SURVEY NO. N-7-B

KRUMBEIN FOR BAKER-ROGERS 1973 SURVEY NO. I-16-C

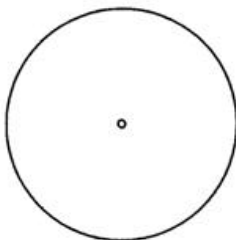
EDWARDS FOR UNIVERSAL REALTY 1976 SURVEY NO. K-92-A

MONUMENTS AND ACCESSORIES FOUND: CONDITION AND SOURCE

CONC. CYL. WITH BRASS PLUG SECTION CORNER

MONUMENT DETAIL

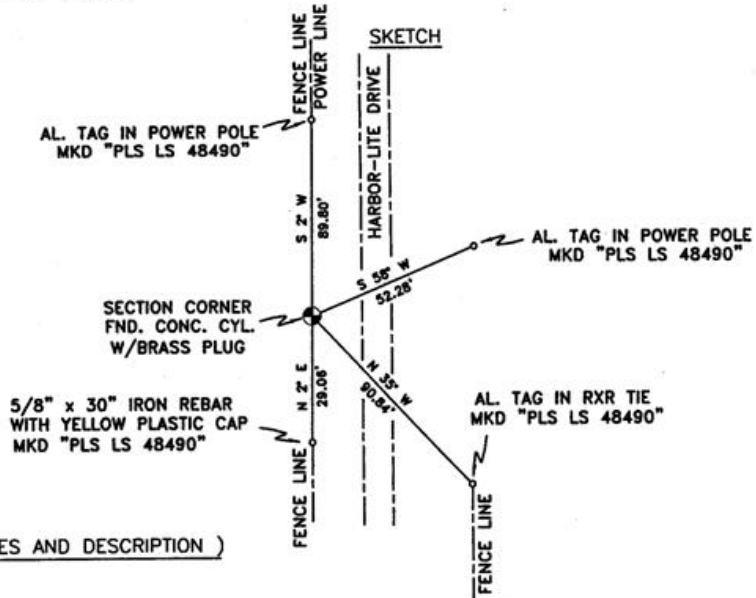
FND. CONC. CYL. WITH BRASS PLUG



NAD 83/91
OREGON STATE PLANE
INTERNATIONAL FEET

N 819052.5091
E 8479211.8894

MONUMENT SET (PROCEDURES AND DESCRIPTION)



NEW ACCESSORIES FROM WHICH

- A 5/8" x 30" IRON REBAR WITH A YELLOW PLASTIC CAP MKD "PLS LS 48490" LIES S 2' W, 29.06 FEET.
- AN ALUMINUM TAG "PLS LS 48490" ON A POWER POLE LIES N 2' E, 89.80 FEET.
- AN ALUMINUM TAG "PLS LS 48490" ON A POWER POLE LIES N 58' E, 52.28 FEET.
- AN ALUMINUM TAG "PLS LS 48490" ON A RXR TIE LIES S 35' E, 90.84 FEET.

LOCATION AND COMMENTS

FROM THE INTERSECTION OF HWY. 730 AND HARBOR-LITE DRIVE GO SOUTH +/- 305' ON HARBOR-LITE DRIVE TO CORNER. CORNER FALLS ON WEST SIDE OF HARBOR-LITE DRIVE +/- 25' IN FENCE LINE.

COMPASS DEC.

17.5 DEG EAST

FIRM/AGENCY

PRIMM LAND SURVEYING LLC
1340 N.E. 4TH P.O. BOX 1322
HERMISTON, OREGON 97838

PARTY CHIEF

BRIT L. PRIMM

NOTES

WITNESS

KEITH P. PRIMM
JOE L. PRIMM

SURVEYOR'S SEAL

REGISTERED
PROFESSIONAL
LAND SURVEYOR

Keith P. Primm

OREGON
JULY 12, 2005
KEITH P. PRIMM
48490

EXPIRATION DATE: 12/31/06

06-461-B