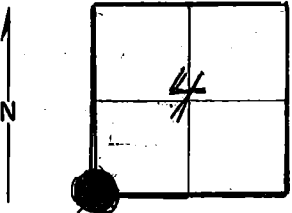


Index File No. E-9 CORNER RECORD (SEARCH) (Ref. FSM 7151.4) Tract or Survey No. \_\_\_\_\_ Cor. No. \_\_\_\_\_  
 T 4 S. R. 33 E. R.D. UKIAH County UMATILLA  
 Merid. W. N.F. UMATILLA State ORE.

CORNER DIAGRAM



DESCRIBE CORNER MONUMENT FOUND

Stone 18" x 12" x 6", 6" Above GROUND AND in good condition.  
 Brass Cap: SEE Monumentation File

DESCRIBE BEARING TREES OR OTHER OFFICIAL ACCESSORIES FOUND

Bts. 30" D.B.H. in good condition - Pine  
 40" D.B.H. in poor condition, (down) but scribbling is still visible. - Pine  
 16" D.B.H. Pine is good condition

PHOTO IDENTIFICATION DATA

Photo No. \_\_\_\_\_  
 Filed At. \_\_\_\_\_  
 Object Ident. \_\_\_\_\_  
 Ident. By \_\_\_\_\_  
 Signature \_\_\_\_\_

PLANE COORDINATE POSITION DATA

State \_\_\_\_\_ Zone \_\_\_\_\_  
 X \_\_\_\_\_  
 Y \_\_\_\_\_  
 Estab. By \_\_\_\_\_  
 Agency \_\_\_\_\_

DESCRIBE CORNER LOCATION RELATIVE TO NEAR-BY FEATURES, ALSO HOW TO REACH CORNER

Signature M.L.C. Title \_\_\_\_\_ Division \_\_\_\_\_ Headquarters \_\_\_\_\_ Date 5-27-70 7100-52 (3/68)

CORNER RECORD (PERPETUATION)

MONUMENT: DESCRIBE NEW MONUMENT SET, OR WORK DONE TO PRESERVE EXISTING MONUMENT

Painted Corner And bearing trees with Florescent paint.

9

ACCESSORIES : DESCRIBE NEW BT's WITNESS OBJECTS ETC. ESTABLISHED, OR WORK DONE TO PRESERVE EXISTING EVIDENCE

10

Work Done By. \_\_\_\_\_ Title \_\_\_\_\_ Date \_\_\_\_\_ State Registration No. or Agency \_\_\_\_\_

Certified Cor. Record Prepared ? Yes No Filed At: \_\_\_\_\_ Date \_\_\_\_\_

11

REMARKS

12

Index File No. E-9 T. R. M. Tract or Surv. No. Cor. 13

USDA-FOREST SERVICE

Index  
File No. E-9

CORNER RECORD (SEARCH)  
(Ref. FSM 7151.4)

Tract or  
Survey No. \_\_\_\_\_  
Cor. No. E-9

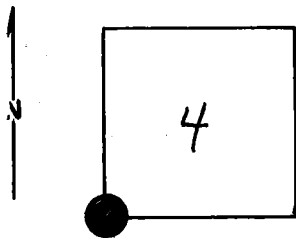
T 4S R. 33E

R.D. Uxiah County Umatilla

Merid. Will

N.F. Umatilla State Oregon

CORNER DIAGRAM



DESCRIBE CORNER MONUMENT FOUND SET

Brass Cap: 1977

DESCRIBE BEARING TREES OR OTHER OFFICIAL ACCESSORIES FOUND

Notes on file: See Monumentation File

PHOTO IDENTIFICATION DATA

Photo No. \_\_\_\_\_  
Filed At. \_\_\_\_\_  
Object Ident. \_\_\_\_\_  
Ident. By \_\_\_\_\_

DESCRIBE CORNER LOCATION RELATIVE TO NEAR-BY FEATURES, ALSO HOW TO REACH CORNER

PLANE COORDINATE POSITION DATA

State \_\_\_\_\_ Zone \_\_\_\_\_  
X \_\_\_\_\_  
Y \_\_\_\_\_  
Estab. By \_\_\_\_\_

Signature \_\_\_\_\_ Title \_\_\_\_\_ Division \_\_\_\_\_ Headquarters \_\_\_\_\_ Date \_\_\_\_\_ 7100-52-(3/68)

2

3

4

5

CORNER RECORD (PERPETUATION)

MONUMENT: DESCRIBE NEW MONUMENT SET, OR WORK DONE TO PRESERVE EXISTING MONUMENT

9

ACCESSORIES : DESCRIBE NEW BT'S WITNESS OBJECTS ETC. ESTABLISHED, OR WORK DONE TO PRESERVE EXISTING EVIDENCE

10

Work Done By \_\_\_\_\_ Title \_\_\_\_\_ Date \_\_\_\_\_ State Registration No. or Agency \_\_\_\_\_

Certified Cor. Record Prepared? Yes No . Filed At: \_\_\_\_\_ Date \_\_\_\_\_

11

REMARKS

12

Index File No. T. R. M. Tract or Surv. No. Cor. 13