

CORNER RECORD (SEARCH)

Index File No. Z-13

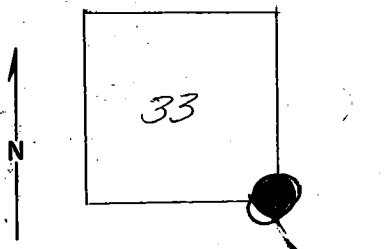
Tract or Survey No. \_\_\_\_\_  
Cor. No. Z-13

22 5

T 4S R. 30E  
Merid. Willamette

R.D. Ukiah County Umatilla  
N.F. Umatilla State Oregon

CORNER DIAGRAM



DESCRIBE CORNER MONUMENT FOUND *Original notes*

BT. PP 31" DBH N42W 13' in sec. 33  
 " 31" " S23W 11' in " 4 ● (see mon. file)  
 " 20" " S42E 33' " " 3  
 " 21" " N42E 82' " " 34

Corner-a pine of rocks with one rock having original notches. 2

DESCRIBE BEARING TREES OR OTHER OFFICIAL ACCESSORIES FOUND

PHOTO IDENTIFICATION DATA

Photo No. \_\_\_\_\_  
 Filed At. \_\_\_\_\_  
 Object Ident. \_\_\_\_\_  
 Ident. By \_\_\_\_\_  
*Signature*

DESCRIBE CORNER LOCATION RELATIVE TO NEAR-BY FEATURES, ALSO HOW TO REACH CORNER

a section line board on Rd. S420 or the Sugar Bowl Rd.  
 thus east - 350' to the pile of rock indicating the corner.

PLANE COORDINATE POSITION DATA

State \_\_\_\_\_ Zone \_\_\_\_\_  
 X \_\_\_\_\_  
 Y \_\_\_\_\_  
 Estab. By \_\_\_\_\_  
*Agency*

Signature

*W/ L. Ward*

Title

Division

Headquarters

Date

*1962*

7100-52

REV. 65 5

CORNER RECORD (PERPETUATION)

MONUMENT : DESCRIBE NEW MONUMENT SET, OR WORK DONE TO PRESERVE EXISTING MONUMENT

9

ACCESSORIES : DESCRIBE NEW BT'S WITNESS OBJECTS ETC. ESTABLISHED, OR WORK DONE TO PRESERVE EXISTING EVIDENCE

10

Work Done By \_\_\_\_\_ Title \_\_\_\_\_ Date \_\_\_\_\_ State Registration No. or Agency \_\_\_\_\_

Certified Cor. Record Prepared ? Yes No Filed At: \_\_\_\_\_ Date \_\_\_\_\_

11

REMARKS

12

Index File No. Z-13 T. R. M. Tract or Surv. No. Cor. 13

Index  
File No. A-13

**CORNER RECORD (SEARCH)**

(Ref. FSM 7151.4)

Tract or Survey No. \_\_\_\_\_  
Cor. No. A-13

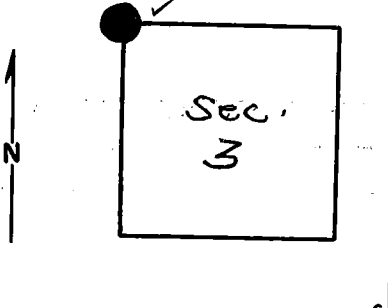
T 5 S R. 30 E

R.D. VK19h County Umatilla

Merid. W11

N.F. Umatilla State Oregon

**CORNER DIAGRAM**



**DESCRIBE CORNER MONUMENT FOUND**

Brass cap monument.  
See 2-13, T4S, R30E, monumentation file.

**DESCRIBE BEARING TREES OR OTHER OFFICIAL ACCESSORIES FOUND**

**PHOTO IDENTIFICATION DATA**

Photo No. \_\_\_\_\_  
Filed At. \_\_\_\_\_  
Object Ident. \_\_\_\_\_  
Ident. By \_\_\_\_\_  
*Signature*

**DESCRIBE CORNER LOCATION RELATIVE TO NEAR-BY FEATURES, ALSO HOW TO REACH CORNER**

**PLANE COORDINATE POSITION DATA**

State \_\_\_\_\_ Zone \_\_\_\_\_  
X \_\_\_\_\_  
Y \_\_\_\_\_  
Estab. By \_\_\_\_\_  
*Agency*

Signature  
J. Hollaman

Title \_\_\_\_\_ Division \_\_\_\_\_ Headquarters \_\_\_\_\_

Date  
1/75

**CORNER RECORD ( PERPETUATION )**

**MONUMENT: DESCRIBE NEW MONUMENT SET, OR WORK DONE TO PRESERVE EXISTING MONUMENT**

**ACCESSORIES : DESCRIBE NEW BT'S WITNESS OBJECTS ETC. ESTABLISHED, OR WORK DONE TO PRESERVE EXISTING EVIDENCE**

Work Done By \_\_\_\_\_ Title \_\_\_\_\_ Date \_\_\_\_\_ State Registration No. \_\_\_\_\_  
or Agency \_\_\_\_\_

Certified Cor. Record Prepared ? Yes No Filed At: \_\_\_\_\_ Date \_\_\_\_\_

**REMARKS**

Index File No. T. R. M. Tract or Surv. No. Cor.