

USDA-FOREST SERVICE

Index File No. R-23  
 T 45 R. 30E  
 Merid. Willamette

CORNER RECORD (SEARCH)

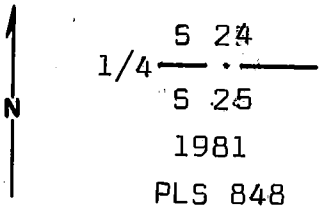
(Ref. FSM 7151.4)

R.D. Ukiah County Umatilla Tract or Survey No. \_\_\_\_\_  
 N.F. Umatilla State Oregon Cor. No. \_\_\_\_\_

34

CORNER DIAGRAM

T45 R30E



DESCRIBE CORNER MONUMENT FOUND

Found 16"x12"x8" stone in a mound of stone, no marks visible.

DESCRIBE BEARING TREES OR OTHER OFFICIAL ACCESSORIES FOUND

Found stump hole S10°W, 14 ft. from stone. Found 30 inch pine stump, no scribing visible, bears N60°E, 66 ft. from stone. Georgia Pacific location tag states "Scribing visible in 1970." Accepted stone as position of the 1/4 corner.

PHOTO IDENTIFICATION DATA

Photo No. \_\_\_\_\_  
 Filed At. \_\_\_\_\_  
 Object Ident. \_\_\_\_\_  
 Ident. By \_\_\_\_\_  
 Signature \_\_\_\_\_

DESCRIBE CORNER LOCATION RELATIVE TO NEAR-BY FEATURES, ALSO HOW TO REACH CORNER

Corner is in a small swale approx. 250 ft. North of a gentle NE draw bottom, in open ground, with scattered pine trees. A primitive road runs from the ridge road down the draw approx. 100 ft. South of the corner. A stock watering trough approx. 200 ft. South of corner.

PLANE COORDINATE POSITION DATA

State \_\_\_\_\_ Zone \_\_\_\_\_  
 X \_\_\_\_\_  
 Y \_\_\_\_\_  
 Estab. By \_\_\_\_\_  
 Agency \_\_\_\_\_

Signature \_\_\_\_\_

Title \_\_\_\_\_ Division \_\_\_\_\_ Headquarters \_\_\_\_\_ Date \_\_\_\_\_  
 PLS 848 Mt. Vernon, OR 7/28/81

7100-52-(3,68)

**CORNER RECORD (PERPETUATION)**

**MONUMENT: DESCRIBE NEW MONUMENT SET, OR WORK DONE TO PRESERVE EXISTING MONUMENT**

Set 3"x30" galv. iron pipe with 3" brass cap stamped as shown on the diagram. Set pipe 16 inches in the ground and raised a mound of stone around the pipe.

From which:

**ACCESSORIES: DESCRIBE NEW BT'S WITNESS OBJECTS ETC. ESTABLISHED, OR WORK DONE TO PRESERVE EXISTING EVIDENCE.**

A pine 18 inches dia. bears N76°E, 116.8 ft. scribed 1/4 S 24 BT.  
A pine 14 inches dia. bears S49°E, 42.3 ft. scribed 1/4 S 25 BT.  
Set steel post with warning sign 5 ft. North from corner.  
Nailed bearing tree signs and brass washers stamped PLS 848 to each tree.  
Painted red band around each tree.

Work Done By D. M. Ferguson Title Surveyor Date 7/28/81 State Registration No. or Agency OR PLS 848

Certified  Registered Prepared Yes  No Filed At: Umatilla Co. Surveyor Off Date

**REGISTERED**  
**PROFESSIONAL**  
**LAND SURVEYOR**

**REMARKS**

Witnesses to above corner:  
D. Mitchell Ferguson  
Mike Woodward

OREGON  
JULY 12, 1968  
DOUGLAS M. FERGUSON  
848

USDA-FOREST SERVICE

Index \_\_\_\_\_  
 File No. R-23

CORNER RECORD (SEARCH)

(Ref. FSM 7151.4)

Tract or

Survey No. \_\_\_\_\_

Cor.

No. R-23

T 1 S R 30E

R.D.

Ukiah

County

Umatilla

Merid. W.M.

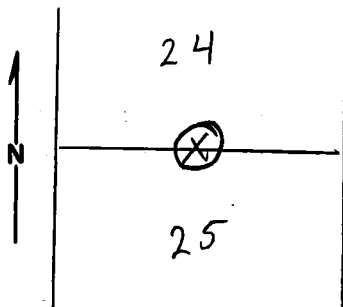
N.F.

Umatilla

State

Oregon

CORNER DIAGRAM



DESCRIBE CORNER MONUMENT FOUND

Found a mound of stone with a basalt stone 16" x 12" x 8" in a mound of stone. No  $\frac{1}{4}$  could be found on the stone.

DESCRIBE BEARING TREES OR OTHER OFFICIAL ACCESSORIES FOUND

Found a stump hole and parts of a rotten tree S 5 W 28LKS. from the mound of stone. No scribe was visible. A old Georgia Pacific location poster was found on a nearby pine tree. The location poster has a note scratched on it that the scribe on the rotted tree was visible in 1960. The initials on the location poster were J.M. (probably Jerry McKague)

PHOTO IDENTIFICATION DATA

Photo No. \_\_\_\_\_  
 Filed At. \_\_\_\_\_  
 Object Ident. \_\_\_\_\_  
 Ident. By \_\_\_\_\_  
 Signature \_\_\_\_\_

DESCRIBE CORNER LOCATION RELATIVE TO NEAR-BY FEATURES, ALSO HOW TO REACH CORNER.

PLANE COORDINATE POSITION DATA

State \_\_\_\_\_ Zone \_\_\_\_\_  
 X \_\_\_\_\_  
 Y \_\_\_\_\_  
 Estab. By \_\_\_\_\_  
 Agency \_\_\_\_\_

Signature

Danny Evans

Title

Civil Eng Tech

Division

Eng

Headquarters

Ukiah

Date

Aug 1979

7100-52-(3/68)

**CORNER RECORD (PERPETUATION)**

**MONUMENT: DESCRIBE NEW MONUMENT SET, OR WORK DONE TO PRESERVE EXISTING MONUMENT**

**ACCESSORIES : DESCRIBE NEW BT'S WITNESS OBJECTS ETC. ESTABLISHED, OR WORK DONE TO PRESERVE EXISTING EVIDENCE**

Work Done By \_\_\_\_\_ Title \_\_\_\_\_ Date \_\_\_\_\_ State Registration No. \_\_\_\_\_  
or Agency \_\_\_\_\_  
Certified Cor. Record Prepared ? Yes No Filed At: \_\_\_\_\_ Date \_\_\_\_\_

**REMARKS**