

OREGON CORNER RESTORATION FORM

Section 04 Tow Ship 03 N Range 34 E, W.M. Corner Code No.     

County Umatilla Date 5-5-93

2-7

CORNER DESIGNATION

Quarter Corner common to S32 & S4

- Condition Report Only
- Not Found
- Renewed
- Unrecorded
- Surveyed In
- Referenced Out

Previous Renewals/Surveys, etc. Corner originally set by W. Odell in 1866 was a post w/ charred stake, mounds, and pits.

No record of any perpetuation.

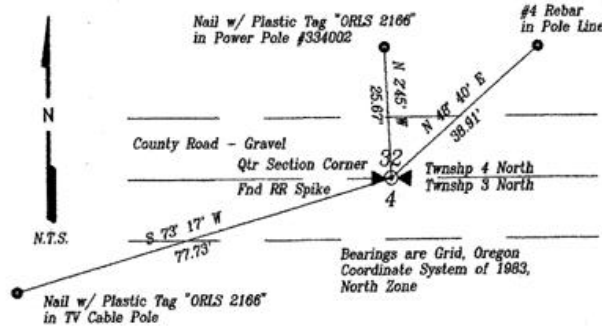
Monument(s) & Accessories Found: (Condition and Source)

Found a R.R. Spike in the center of a gravel county road. No record of who set or when.

The spike is at the location shown on Map Q-1122-C, records of the Umatilla County Surveyor.

Monument Detail

Sketch



Monument Set (Procedures and Description)

No new monument set.

New Accessories

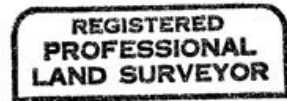
A nail w/ Plastic tag "ORLS 2166" in a TV Cable Pole bears S 73° 17' W, 77.73'  
A nail w/ Plastic tag "ORLS 2166" in Power Pole #334002 bears N 2° 45' W,  
25.67'; A 1/2" rebar bears N 48° 40' E, 38.91'

Location & Comments

Corner is located in the center of a county road, Compass Declination       
at a farm line. Firm/Agency       
     Dwight M. Bartleson L.S.

Surveyor's Seal

     Address Rt. 1, Box 46  
     Athena, OR 97813



RECEIVED BY      Party Chief D. Bartleson  
Umatilla County Surveyor Notes       
Date 5-93 Witness       
Rec'd By     

*Dwight M. Bartleson*

No. 93-48-B

