

OREGON CORNER RESTORATION FORM

Section 1 Township 4 N Range 34 E

County Umatilla Date 1-27-88

E-23

CORNER DESIGNATION

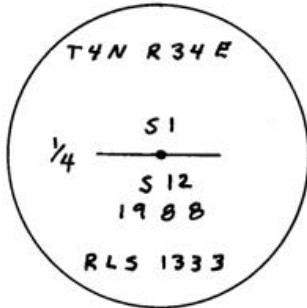
- Condition Report Only
- Not Found
- Renewed
- Unrecorded
- Surveyed In
- Referenced Out

Previous Renewals/Surveys, etc. Originally post, pits, and mounds
(1865)

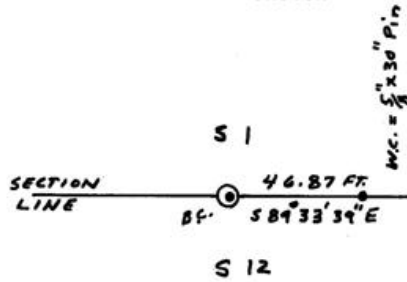
Monument(s) & Accessories Found: (Condition and Source)

(None)

Monument Detail



Sketch



Monument Set (Procedures and Description)

Set 1" x 30" G.I.P. w/flared base and 2 1/2" brass cap 12" below
the ground in a wheat field.

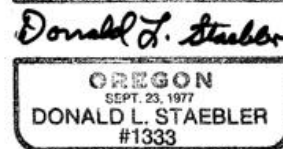
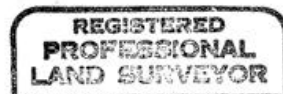
New Accessories

A witness monument bears S 89° 34" E - 46.87 feet
Witness monument is a 5/8" x 30" rebar with a red plastic cap
marked R.L.S. 1333. Set a steel fence post near the W.C. with
a yellow witness sign attached.

Location & Comments

Corner is located in a wheat field Compass Declination _____
30 feet N. of old Firm/Agency Don Staebler
fence line and 68 feet Engineer-Surveyor _____
West of centerline Address 1532 S. W. 41st
of Count Road Pendleton, OR 97801
 Party Chief Don Staebler

Surveyor's Seal



RECEIVED BY
Umatilla County Surveyor

Date 2-88

Rec'd By KA

No. 88-9-A

Notes _____

Witness _____