

OREGON CORNER RESTORATION FORM

Section 1 Township 4 N Range 34 E

County Umatilla Date 1-27-88

C-21

CORNER DESIGNATION

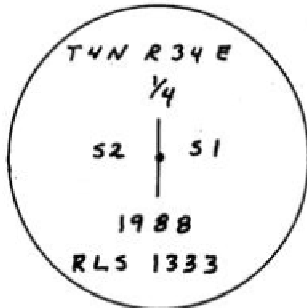
- Condition Report Only
- Not Found
- Renewed
- Unrecorded
- Surveyed In
- Referenced Out

Previous Renewals/Surveys, etc. Originally a post, pits, and mounds (1865)

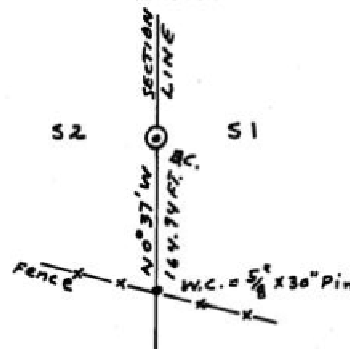
Monument(s) & Accessories Found: (Condition and Source)

(None)

Monument Detail



Sketch



Monument Set (Procedures and Description)

Set 1\" x 30\" G.I.P. w/flared base and 2 1/2\" brass cap 12\" below ground surface in wheat field.

New Accessories

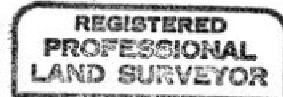
A witness monument bears S 0° 37' E - 164.94 feet  
Witness monument is a 5/8\" x 30\" rebar with a red plastic cap marked R.L.S. 1333 set in fence line. Set a steel fence post near the W.C. with a yellow witness sign attached.

Location & Comments

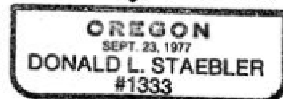
Corner is located in middle of wheat field

Compass Declination \_\_\_\_\_  
Firm/Agency Don Staebler  
Engineer - Surveyor  
Address 1532 S. W. 41st  
Pendleton, OR 97801

Surveyor's Seal



*Donald J. Staebler*



RECEIVED BY

Umatilla County Surveyor

Party Chief Don Staebler

Date 2-88

Notes \_\_\_\_\_

Rec'd By RT

Witness \_\_\_\_\_

No. 88-9-A