

OREGON CORNER RESTORATION FORM

Section 1 Township 4 N Range 34 E

County Umatilla Date 1-27-88

A-21

CORNER DESIGNATION

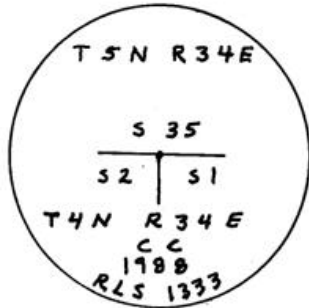
- Condition Report Only
- Not Found
- Renewed
- Unrecorded
- Surveyed In
- Referenced Out

Previous Renewals/Surveys, etc. Originally a post, pits and mounds (1865) tie from old Northern Pacific Railroad map.

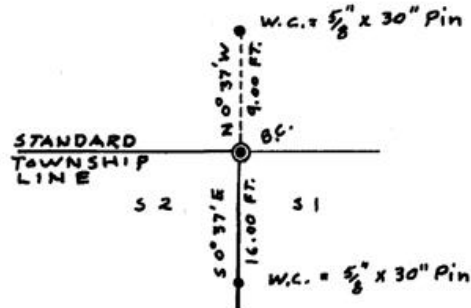
Monument(s) & Accessories Found: (Condition and Source)

Found centerline of railroad tracks and used railroad tie to corner from map. Maps are located in Umatilla Co. Court House in Assessor's office.

Monument Detail



Sketch



Monument Set (Procedures and Description)

Set 1" x 30" G.I.P. w/flared base and 2 1/2" brass cap 6" below the surface of the graveled county road.

New Accessories

A witness monument bears N 0° 37' W - 9.00 Ft.

A witness monument bears S 0° 37' E - 16.00 Ft.

Witness monuments are 5/8" x 30" rebar with red plastic caps marked R.L.S. 1333. Set steel fence post near each W.C. with yellow witness signs attached.

Location & Comments

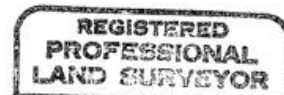
Corner is located near north edge of county road

Compass Declination \_\_\_\_\_  
Firm/Agency Don Staebler  
Engineer-- Surveyor

Surveyor's Seal

RECEIVED BY

Address 1532 S. W. 41st  
Pendleton, OR 97801



*Donald L. Staebler*

Umatilla County Surveyor

Party Chief Don Staebler

Date 2-88

Notes \_\_\_\_\_

Rec'd By RT

Witness \_\_\_\_\_

No. 88-9-A

