

OREGON CORNER RESTORATION FORM

COUNTY: Umatilla DATE: 3/31/15

CORNER DESIGNATION: The Northwest Corner of Section 2, Township 3 North, Range 31 East, A-17.

PREVIOUS RENEWALS/SURVEYS ETC.: Corner originally established by D.S. Payne, under Contract No. 100, dated 8/1/1861, notes state: Set charred stake with mound trench and pits as per instructions for corner to secs 2, 3, 34 & 35. The corner point was computed by Dave Krumbein on Survey No. M-108-B in 1976 and a brass cap monument was established.

MONUMENT AND ACCESSORIES FOUND: The monument from Survey No. M-108-B is missing.

MONUMENT MARKING DETAIL:

T4N R31E
S34|S35
S3|S2
T3N
2015
PLS 54657

MONUMENT SET:

To re-establish this corner, I proportioned distance, (departure) per Survey M-108-B, between the existing brass cap monument at the North one-quarter corner of Section 3 and true position of bent existing monument at the Northeast Corner of Section 2. I then reestablished the corner point by distance-distance intersection from the Northeast Corner of Section 2 and the reestablished position of the Southeast Corner of Section 3. At the re-established position, I set a 2 3/8" brass cap on a 1 1/4" x 30" galvanized iron pipe with top 20" below ground level, stamped as shown in "Monument Marking Detail"

From which:

A silver deep-1 magnet buried 20" in the ground, bears North 50° East, 39.1 feet.

A 5/8" x 24" rebar with a 1 1/4" purple plastic cap, in field berm line, stamped "Wells Surveying PLS 54657", bears South 42° East, 32.2 feet.

A 5/8" x 24" rebar with a 1 1/4" purple plastic cap, in field berm line, stamped "Wells Surveying PLS 54657", bears South 46° West, 28.7 feet.

An orange deep-1 magnet buried 20" in the ground, bears North 28° West, 35.0 feet.

Set steel fence post with witness post sign 1.0 feet North of corner monument. Buried bearing object tags with magnets. Wired bearing object signs to rebars.

LOCATION AND COMMENTS: The remonumented point as calculated by Dave Krumbein is 20 feet +/- North of old field berm with old fence posts East & West.

OREGON STATE PLANE COORDINATE, North Zone, NAD 83(91), International Feet:

N = 773281.45

E = 8607270.89

FIRM: Wells Surveying

P.O. Box 1696

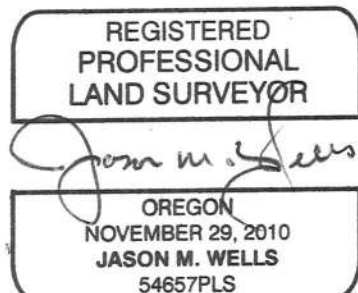
Pendleton, OR 97801

COMPASS DECLINATION: 18° East

Surveyor's Seal

Witnesses: Jason Wells, PLS
Dean Roy

/3N31A17



RENEWS: 6-30-16

15-052-C