

OREGON CORNER RESTORATION FORM

Section 6 Township 4N Range 31E
 County Umatilla Date: 11-10-2006

Corner Designation: 4N31E A1

Condition Report Only
 Not Found _____
 Remonumented _____
 Unrecorded _____
 Surveyed In _____
 Referenced Out _____

Previous Renewals / Surveys, etc.

07-1859 D.Thompson GLO Guide Meridian (81) "Set post post corner to Townships No's 4&5 North of Ranges 30&31 East and build a mound of Earth with pits trenches as per instructions.

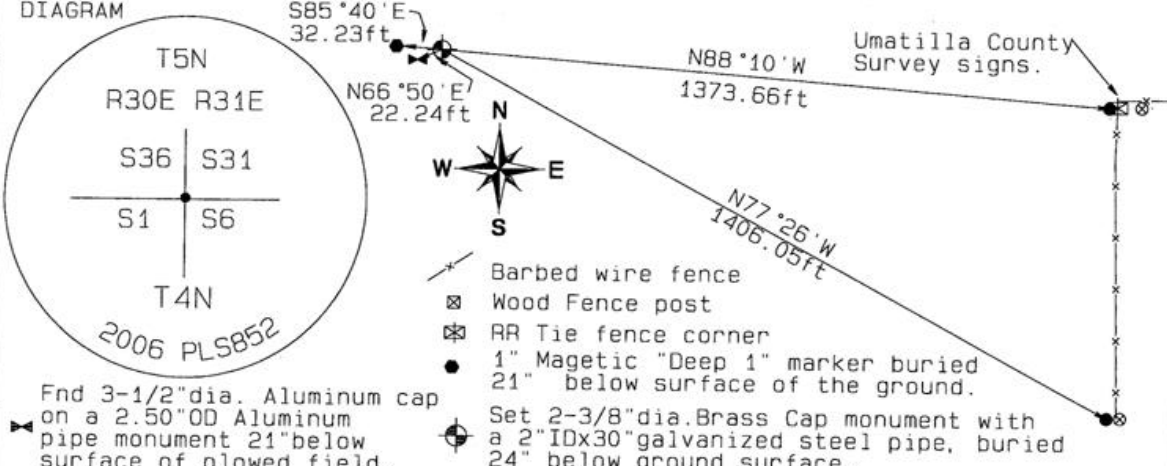
08-1865 H.Maxon & J.Hurd GLO Std Parallel (50) "Commence at the established corner to Townships No.4&5 North, of Ranges No.30&31 East of the Willamette Meridian, on the Guide Meridian, thence west through Ranges 30,29"

08-1865 W.Odell Et All Std Parallel (110) "Commenced the survey of the first Standard Parallel North of Base Line and East through Ranges 31,32,33,34,35,36+37. between Township 4+5 North, at the NorthEast-Corner of Township No 4 North in Range No 30 East of Willamette Meridian, Thence East on South Boundary of section 31 Town 5 North in Range 31 East."

12-1874 N.Walden Resurvey (209) "From the Standard Corner to Township 5 North Ranges 30 + 31 East - I ran East on a blank line along the South boundary of Sec.31 T5.N.R.31 E."

05-1974 D.Krumbein (I-25-B) Computed point
 06-1974 D.Krumbein (I-24-B) Computed point
 06-1974 D.Krumbein (I-167-B) Computed point
 05-1980 W.Kimmel BLM (83-195-B) "Set an aluminum post, 28 ins. long, 2-1/2 ins. diam., 46 ins. in the ground, the top 18 ins. below the surface of a cultivated field with aluminum cap mkd.
 05-2006 D.Haddock (06-263-C) "Found Brass cap"

Monument and Accessories Found: (condition and source)
 Found BLM 3-1/4" dia. Aluminum stamped cap on a 2-1/2" dia aluminum post 21" below the surface of the ground. (See notes below)



Found 3-1/2" dia. Aluminum cap on a 2.50" OD Aluminum pipe monument 21" below surface of plowed field.

Set 2-3/8" dia. Brass Cap monument with a 2" ID x 30" galvanized steel pipe, buried 24" below ground surface.

MONUMENT (S) AND ACCESSORIES SET (Procedures and Description)
 Set 2-3/8" dia. Brass cap monument (Stamped as shown above) on a 2" ID x 30" long galvanized steel pipe 24" below ground surface. Set a Umatilla County Survey Sign on the North and West faces of the Wood fence corner. Compass Declination 18° E

REFERENCES SET:
 Set two 5/8" x 30" Iron rebar with a 2" dia. red plastic cap as shown above.
 Made GPS tie to TRI Stations Oregon State Plane Coord North Zone
 LAURILA RESET RB 1379 and WALLS RB 1396 Northing 804573.87
 Latitude 45° 51' 49.34775" N Easting 8585414.85
 Longitude 118° 59' 43.07834" W Ortho Height 1174.82
 NAD 83 (1991) Ellipsoidal Height 1113.50

LOCATION AND COMMENTS:
 Proceed South 1.1 miles on Umatilla County Road 1172 (KOSMOS RD) around the curve West. Thence South on the access road 2.5 miles to the access road up the NorthEast Ravine. Thence NorthEast 0.75 miles to a North/South/East fence line. Thence East through the wire gate. Thence North 0.25 miles along the East side of the North/South fence line to the fence corner (as shown in the sketch above). Thence 0.25 miles West to the location of the BLM corner in the plowed field on the East slope at the head of a NorthWest draw.

**Note: The 1980 BLM monument is in error due to missed monument (T5NR31E1) & error in T5NR31E25 location. In addition ties to local corners by ODOT surveys 1934 (5B-1-1) and 1940 (5B-29-11) & 1907 J.Kimbrell (257) Bk2.

RECEIVED BY: Firm / Agency
 Date: 02-07 Haddock Surveying
 Rec'd By: *DAK* P. O. Box 1574
 No.: 07-1282 Pendleton, OR 97801
 (541) 276-2174

Surveyors Seal

REGISTERED
 PROFESSIONAL
 LAND SURVEYOR

David L. Haddock

OREGON
 JULY 12, 1968
 DAVID L. HADDOCK
 852

RENEWS 6-30-07