

OREGON CORNER RESTORATION FORM

Section 5 Township 3N
County Umatilla Date: 12/31/08

Range 29E

Corner Designation: 3N29A9

Section corner common to sections 5,4, T3N, R29E and sections 32,33, T4N, R29E, W.M.

- Condition Report Only
- Not Found
- Remonumented
- Unrecorded
- Surveyed In
- Referenced Out

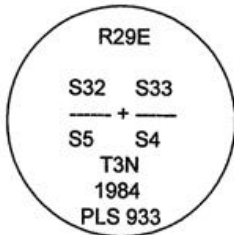
Previous Renewals / Surveys, etc.

Originally Surveyed by Gates in 1859. He set a post in a mound of earth.
 In 1984 Krumbain set a 2 1/2" B.C.
 In 1991 Krumbain found a 2 1/2" B.C.
 In 1995 Edwards found a 2 1/2" B.C.
 In 1998 Haddock found a 2 1/2" B.C.
 In 2002 Primm found a 2 1/2" B.C.

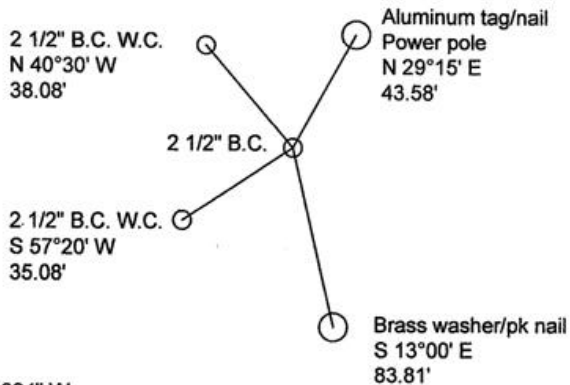
Monuments and Accessories Found: (Condition and Source)

A 2 1/2" B.C. W.C. #951, lies N 40°30' W, 38.08'.
 A 2 1/2" B.C. W.C. #951, lies S 57°20' W, 35.08'.
 An aluminum tag #951 and nail on a power pole lies N 29°15' E, 43.58'.
 A 2 1/2" B.C.

Diagram



Sketch



NAD 83/91
 OREGON STATE PLANE NORTH
 INTERNATIONAL FEET

N772036.64
 E8532497.80

LAT - 45° 46' 37.21822" N LON - 119° 12' 18.12094" W

Monument (s) Set (Procedures and Description)

None.

References Set:

A brass washer #43406 and pk nail on a power pole lies S 13°00' E, 83.81'.

Location and Comments

The corner is in the intersection of Edwards Rd. and Stage Gulch Rd.

Compass Declination
17° E

Surveyors Seal

REGISTERED
 PROFESSIONAL
 LAND SURVEYOR

Robert Douglas English
 OREGON
 JANUARY 11, 2005
 ROBERT DOUGLAS ENGLISH
 43406LS

RENEWAL DATE: 12/31/09

RECEIVED BY:

Date: 1-11
 Rec'd By: RK
 No. 11-008-B

Firm / Agency

Survey One, LLC.
 P.O. Box 382
 Pendleton, OR 97801
 (541) 276-2055