

OREGON CORNER RESTORATION FORM

SECTION 5,32 TOWNSHIP 4 & 3 NORTH RANGE 29 EAST Z-7
 COUNTY : UMATILLA DATE 01/02

CORNER DESIGNATION

1/4 CORNER

CONDITION REPORT ONLY

- NOT FOUND
- RENEWED
- UNCOVERED
- SURVEYED IN
- REFERENCED

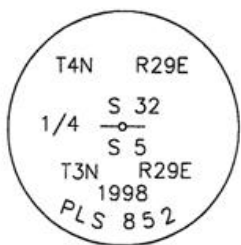
PREVIOUS RENEWALS / SURVEYS, ETC.

ORIGINALLY SURVEYED IN 1859 BY GATES UNDER CONTRACT #84. HE SET A POST IN A MOUND OF EARTH.
 KIMBRELL SET AN I.P. FOR COR. IN BLK. 2 OF RECORD OF PRIVATE SURVEYS, PG263.
 IN 1974 KRUMBEIN FOUND A B.C. AT THIS LOCATION.
 IN 1995 EDWARDS SET A 5/8" IRON ROD WITH A 2" ALUM. CAP.
 IN 1998 HADDOCK SET A 2 1/4" BRASS CAP OVER KIMBRELLS IRON PIPE.

MONUMENTS AND ACCESSORIES FOUND: CONDITION AND SOURCE

AN ALUMINUM TAG #951 ON A POWER POLE LIES N 60°39'15" W, 54.24 FEET.
 AN ALUMINUM TAG #951 ON A POWER POLE LIES S 53°02'10" W, 36.50 FEET.
 A BRASS CAP IN A MONUMENT CASE ORGIN UNKNOWN LIES N 10°17'25" E, 2.90 FEET.
 A 2" ALUMINUM CAP LIES S 21°12'22" E, 1.38 FEET.

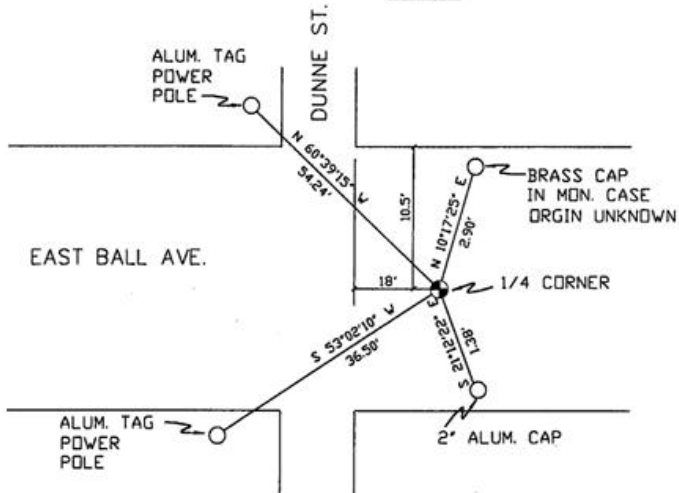
MONUMENT DETAIL



NAD 83/91
 OREGON STATE PLANE
 INTERNATIONAL FEET

771969.8482
 8529874.0170

SKETCH



MONUMENT SET (PROCEDURES AND DESCRIPTION)

NEW ACCESSORIES FROM WHICH

LOCATION AND COMMENTS

AT INTERSECTION OF DUNNE ST. AND BALL AVENUE.

COMPASS DEC.

FIRM/AGENCY
 PRIMM LAND SURVEYING
 P.O. BOX 1322
 HERMISTON, OREGON 97838

PARTY CHIEF
 KEITH P. PRIMM

NOTES

WITNESS
 BRIT L. PRIMM

RECEIVED BY

Umatilla County Surveyor

Date 2-02

Rec'd By KK

No. 02-49-9

SURVEYOR'S SEAL

REGISTERED
 PROFESSIONAL
 LAND SURVEYOR

Brit L. Primm
 OREGON
 JULY 13, 1999
 BRIT L. PRIMM
 48509

EXPIRATION DATE: 12/31/02