

OREGON CORNER RESTORATION FORM

Section 31,32,5,6
County Umatilla

Township 3N,4N
Date: 12/31/08

Range 29E

Corner Designation: 3N29A5

Section Corner

- Condition Report Only
- Not Found
- Remonumented
- Unrecorded
- Surveyed In
- Referenced Out

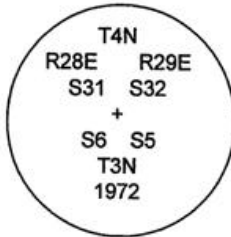
Previous Renewals / Surveys, etc.

Originally Surveyed by Gates in 1859. He set a post in a mound of earth.
 In 1972 Harris found an Iron Pipe.
 In 1988 Edwards set a 1"x30" iron pipe with a 2 3/8" brass cap in place of a 1 1/2" iron pipe.
 In 1998 Haddock found a 2 1/4" Brass cap.
 In 2002 Primm found a 2 3/8" Brass cap.

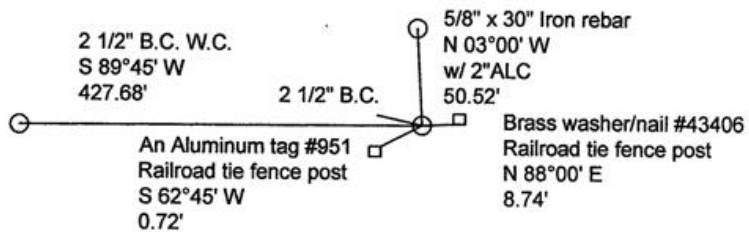
Monuments and Accessories Found: (Condition and Source)

An aluminum tag #951 on a railroad tie fence post lies S 62°45' W, 0.72'.
 A 5/8" x 30" Iron rebar w/ 2" Aluminum cap lies N 03°00' W, 50.52'.
 A 1" x 30" Iron rebar w/ 2 3/8" B.C. lies S 89°45' W, 427.68'.
 A 2 3/8" B.C.

Diagram



Sketch



NAD 83/91
 OREGON STATE PLANE NORTH
 INTERNATIONAL FEET

N771908.79
 E8527253.31

LAT - 45° 46' 36.77939" N LON - 119° 13' 32.13608" W

Monument (s) Set (Procedures and Description)

None.

References Set:

A brass washer #43406 and nail on a railroad tie fence post lies N 88°00' E, 8.74'.

Location and Comments

Heading West from Stanfield on Stanfield Meadows Rd. go app. .1 miles once you cross the Umatilla River. The corner is 450 feet east from the witness corner next to the bend in the road.

Compass Declination

17° E

Surveyors Seal

REGISTERED
 PROFESSIONAL
 LAND SURVEYOR

Robert D. English
 OREGON
 JANUARY 11, 2005
 ROBERT DOUGLAS ENGLISH
 43406LS

RECEIVED BY:

Date: 1-11
 Rec'd By: RK
 No. 11-058-B

Firm / Agency

Survey One, LLC.
 P.O. Box 382
 Pendleton, OR 97801
 (541) 276-2055

RENEWAL DATE: 12/31/09