

OREGON CORNER RESTORATION FORM

Section 31 Township 4N Range 29E

Z-3

County UMATILLA Date 3/95

CORNER DESIGNATION

S 1/4 cor

- Condition Report Only
- Not Found
- Renewed
- Unrecorded
- Surveyed In
- Referenced Out

Previous Renewals/Surveys, etc. ORIG SUR. by GATES 1859 cont. #87
He set post in mound. Krumbein set B.C. in place of "Wagon Axle"
1980 # S-15B. I set 2 1/2" B.C. in Conc. 8" Deep with RR spike in Btm.

Monument(s) & Accessories Found: (Condition and Source) 1988 sur. for Staley

Find 2 1/2" B.C. in Conc stamped as below

Find 2 1/2" B.C. Krumbein S 89° 57' 20" W 63.61 Ft.

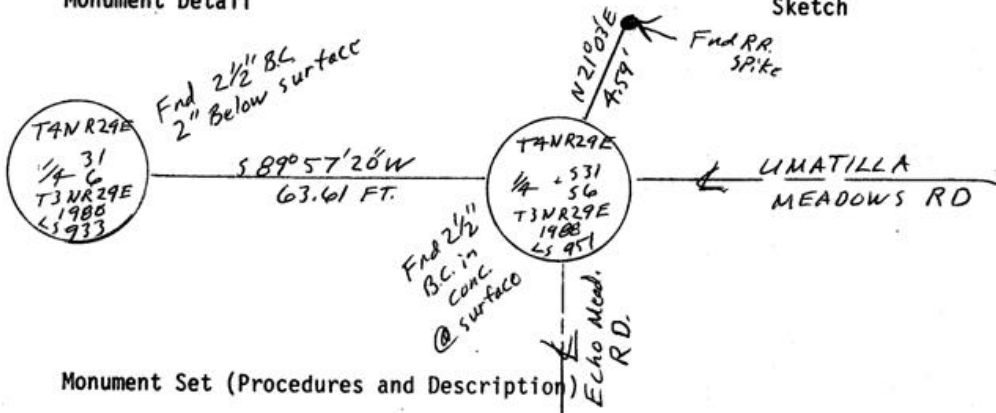
Find RR spike N 21° 03' E 4.59 Ft.

Find Alum Tag # 951 in 14" Locust S 60° 26' E 49.73 Ft.

Find Alum tag # 951 in RRTie F.C. S 43° 51' W 40.15 Ft.

Monument Detail

Sketch



Monument Set (Procedures and Description)

SEE MY 1994-1 CO. PUBLIC MON. SURVEY

New Accessories

Location & Comments

@ intersection

Compass Declination _____

UMATILLA MEADOWS RD. Firm/Agency EDWARDS

& ECHO MEADOWS RD. SURVEYING

Address P.O. Box 763

HERMISTON, OR 97838

Party Chief D. Edwards

Notes _____

Witness J. Coppock

Surveyor's Seal

REGISTERED PROFESSIONAL LAND SURVEYOR

D. Dennis Edwards

OREGON JULY 16, 1971 O. DENNIS EDWARDS 951

RENEWS 12/31/95

RECEIVED BY

Umatilla County Surveyor

Date _____

Rec'd By _____

No. 95-60-B