

OREGON CORNER RESTORATION FORM

SECTION 32.33 TOWNSHIP 4 NORTH RANGE 29 EAST

X-9

COUNTY : UMATILLA DATE 01/02

CORNER DESIGNATION

1/4 CORNER

- CONDITION REPORT ONLY
- NOT FOUND
- RENEWED
- UNCOVERED
- SURVEYED IN
- REFERENCED

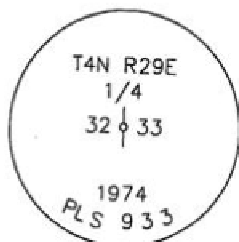
PREVIOUS RENEWALS / SURVEYS, ETC.

ORIGINALLY SURVEYED IN 1861 BY DAVENPORT UNDER CONTRACT #101. HE SET A POST IN A MOUND OF EARTH AND A CHARRED STAKE.
 IN 1949 FRALEY SET A 5/8" IRON ROD.
 IN 1974 KRUMBEIN SET A B.C. IN PLACE OF 5/8" IRON ROD.

MONUMENTS AND ACCESSORIES FOUND: CONDITION AND SOURCE

A 1/2" x 24" IRON ROD WITH A YELLOW PLASTIC CAP MKD "#951" LIES N 42°38'08" W, 43.20 FEET.
 AN ALUMINUM TAG #951 ON A POER POLE LIES N 57°31'08" E, 65.19 FEET.
 A 2 1/2" BRASS CAP 1974 LIES S 61°02'52" E, 38.08 FEET.

MONUMENT DETAIL

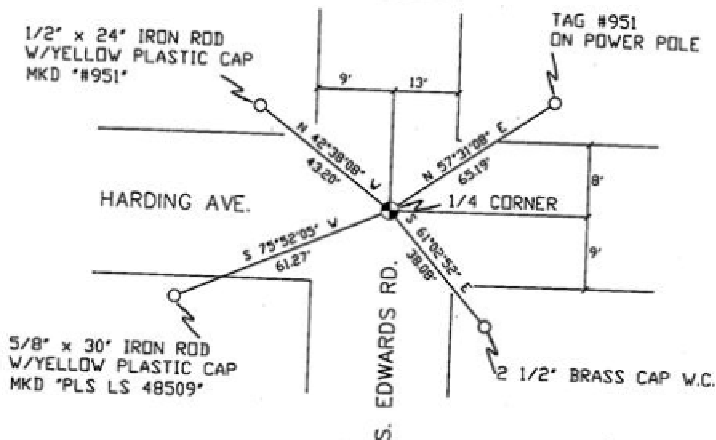


NAD 83/91
 OREGON STATE PLANE
 INTERNATIONAL FEET

774663.0479
 8532467.0972



SKETCH



MONUMENT SET (PROCEDURES AND DESCRIPTION)

NEW ACCESSORIES FROM WHICH

A 5/8" x 30" IRON ROD WITH A YELLOW PLASTIC CAP MKD "PLS LS 48509" LIES S 75°52'05" W, 61.27 FEET.

LOCATION AND COMMENTS

AT INTERSECTION OF HARDING
 AVE. AND EDWARDS ROAD.

COMPASS DEC.

FIRM/AGENCY

PRIMM LAND SURVEYING
 P.O. BOX 1322
 HERMISTON, OREGON 97838

PARTY CHIEF
 KEITH P. PRIMM

NOTES

WITNESS
 BRIT L. PRIMM

Umatilla County Surveyor

Date 2-02

Rec'd By KE

No. 02-49-9

SURVEYOR'S SEAL

REGISTERED
 PROFESSIONAL
 LAND SURVEYOR

Brit L. Primm
 OREGON
 JULY 13, 1999
 BRIT L. PRIMM
 48509

EXPIRATION DATE: 12/31/02