

OREGON CORNER RESTORATION FORM

SECTION 32 TOWNSHIP 4 NORTH RANGE 29 EAST X-7
COUNTY : UMATILLA DATE 01-2002

CORNER DESIGNATION

CTR 1/4

CONDITION REPORT ONLY
 NOT FOUND
 RENEWED
 UNCOVERED
 SURVEYED IN
 REFERENCED

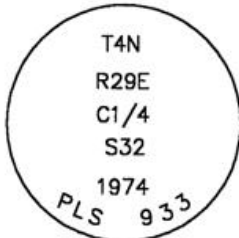
PREVIOUS RENEWALS / SURVEYS, ETC.
KRUMBEIN SET 2 1/2" BRASS CAP IN 1974.

MONUMENTS AND ACCESSORIES FOUND: CONDITION AND SOURCE

FOUND A 2 1/2" BRASS CAP STAMPED AS BELOW:
FROM WHICH:

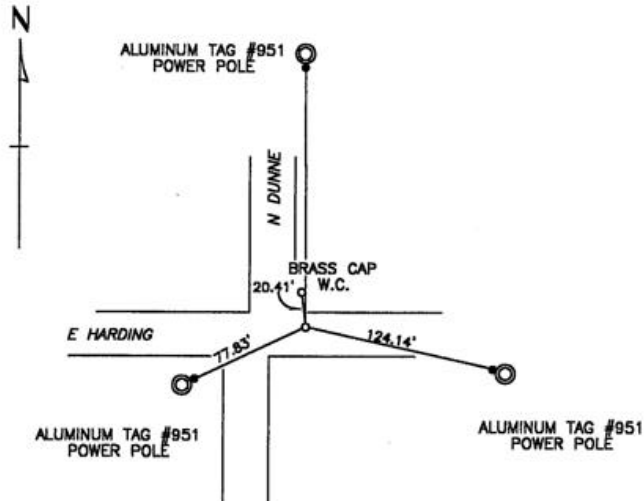
A 1"x30" IRON PIPE WITH A 2 3/8" BRASS CAP WITNESS CORNER BEARS N 5°48'00" W 20.41 FEET

MONUMENT DETAIL



NAD 83/91
OREGON STATE PLANE
INTERNATIONAL FEET
774615.9798
8529837.7302

SKETCH



MONUMENT SET (PROCEDURES AND DESCRIPTION)

NA

NEW ACCESSORIES FROM WHICH

AN ALUMINUM TAG #951 ON A POWER POLE BEARS S 64°53'39" W 77.83 FEET
AN ALUMINUM TAG #951 ON A POWER POLE BEARS N 0°10'36" W 167.49 FEET
AN ALUMINUM TAG #951 ON A POWER POLE BEARS S 77°30'27" E 124.14 FEET

LOCATION AND COMMENTS

AT THE INTERSECTION OF NORTH DUNNE
STREET AND EAST HARDING STREET
STANFIELD, OREGON

COMPASS DEC.

FIRM/AGENCY
EDWARDS SURVEYING
P.O. BOX 763
HERMISTON, OREGON 97838

PARTY CHIEF
CURTIS FAVOREL

NOTES

WITNESS
WALT MUNDELL

SURVEYOR'S SEAL

REGISTERED
PROFESSIONAL
LAND SURVEYOR

G. Dennis Edwards

OREGON
JULY 16, 1971
G. DENNIS EDWARDS
9 5 1
RENEWS 12/31/2003

03-53-9