

OREGON CORNER RESTORATION FORM

SECTION 31,36 TOWNSHIP 4 NORTH RANGE 28 & 29 EAST X-1
 COUNTY : UMATILLA DATE 01/02

CORNER DESIGNATION

1/4 CORNER

- CONDITION REPORT ONLY
 NOT FOUND
 RENEWED
 UNCOVERED
 SURVEYED IN
 REFERENCED

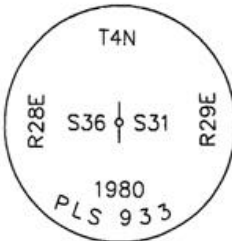
PREVIOUS RENEWALS / SURVEYS, ETC.

ORIGINALLY SURVEYED IN 1860 BY CAMPBELL UNDER CONTRACT #95. HE SET A POST IN A MOUND.
 IN 1980 KRUMBEIN SET A B.C. SEE SURVEY #S-156.

MONUMENTS AND ACCESSORIES FOUND: CONDITION AND SOURCE

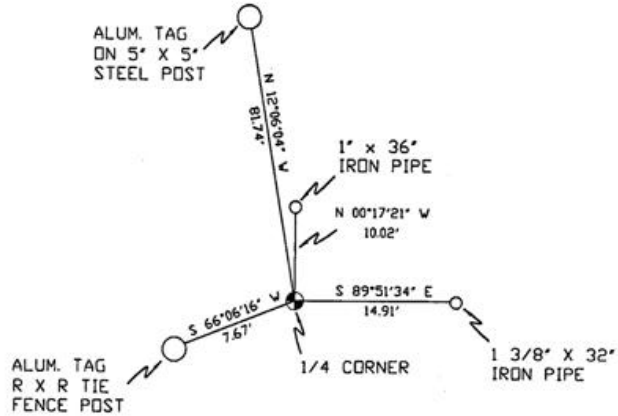
AN ALUMINUM TAG #951 ON A 5" X 5" STEEL POST LIES N 12°06'04" W, 81.74 FEET.
 AN ALUMINUM TAG #951 ON A R X R TIE FENCE POST LIES S 66°06'16" W, 7.67 FEET.
 A 1 3/8" X 32" I.D. IRON PIPE LIES S 89°51'34" E, 14.91 FEET.
 A 1" X 36" IRON PIPE LIES N 00°17'21" W, 10.02 FEET.

MONUMENT DETAIL



NAD 83/91
 OREGON STATE PLANE
 INTERNATIONAL FEET
 774451.0985
 8521362.4133

SKETCH



MONUMENT SET (PROCEDURES AND DESCRIPTION)

NEW ACCESSORIES FROM WHICH

LOCATION AND COMMENTS

FROM INTERSECTION OF ECHO MEADOWS RD. AND UMATILLA MEADOWS RD. GO WEST 1/2 MILE THEN NORTH 1/2 MILE ACROSS FIELDS TO COR.

COMPASS DEC.

FIRM/AGENCY
 PRIMM LAND SURVEYING
 P.O. BOX 1322
 HERMISTON, OREGON 97838

PARTY CHIEF
 KEITH P. PRIMM

NOTES

WITNESS
 BRIT L. PRIMM

RECEIVED BY

Umatilla County Surveyor

Date 2-02

Rec'd by KK

No. 02-49-g

SURVEYOR'S SEAL

REGISTERED
 PROFESSIONAL
 LAND SURVEYOR

Brit L. Primm

OREGON
 JULY 13, 1999
 BRIT L. PRIMM
 48509

EXPIRATION DATE:12/31/02