

OREGON CORNER RESTORATION FORM

SECTION 27 TOWNSHIP 4 NORTH RANGE 29 EAST V-17
 COUNTY : UMATILLA DATE 8-98

CORNER DESIGNATION

SE CORNER

— CONDITION REPORT ONLY
 — NOT FOUND
 — RENEWED
 — UNCOVERED
 X SURVEYED IN
 X REFERENCED

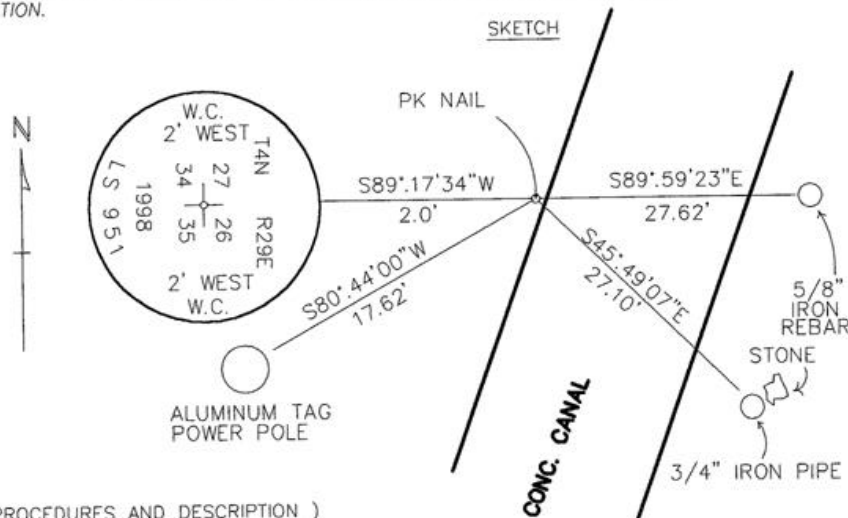
PREVIOUS RENEWALS / SURVEYS, ETC.

ORIGINALLY SURVEYED IN 1861 BY DAVENPORT UNDER CONTRACT #101. HE SET A POST IN A MOUND OF EARTH AND A CHARRED STAKE..

MONUMENTS AND ACCESSORIES FOUND: CONDITION AND SOURCE

I FOUND, S 45°.49'07" E, 27.10 FEET FROM THE CORNER, A 3/4" IRON PIPE LYING JUST SW OF A 12" X 6" X 5" STONE. (I SHOWED SAID STONE ON MY 1994-1 COUNTY SURVEY) I DID NOT USE SAID 3/4" IRON PIPE BECAUSE IT DOES NOT FIT IMPROVEMENTS AND IS ABOUT 20' EAST OF A PROPORTIONAL LOCATION.

MONUMENT DETAIL



MONUMENT SET (PROCEDURES AND DESCRIPTION)

AT THE INTERSECTION OF THE CENTERLINE OF TWO ROADS I SET A PK NAIL IN THE WEST EDGE OF A CONCRETE CANAL.

NEW ACCESSORIES FROM WHICH

A 1" X 30" IRON PIPE WITH A 2 3/8" BRASS CAP STAMPED AS ABOVE LIES S 89°.17'34" W, 2 FEET.
 A 5/8" X 30" IRON REBAR WITH PLASTIC CAP #951 LIES S 89°.59'00" E, 27.62 FEET.
 AN ALUMINUM TAG #951 IN A POWER POLE LIES S 80°.44'00" W, 17.62 FEET.

LOCATION AND COMMENTS

COMPASS DEC.

SURVEYOR'S SEAL

FIRM/AGENCY
 EDWARDS SURVEYING
 P.O. BOX 763
 HERMISTON, OREGON 97838
 97838

PARTY CHIEF
 D. EDWARDS

NOTES

WITNESS
 CURTIS J FAVOREL

REGISTERED
 PROFESSIONAL
 LAND SURVEYOR

G. Dennis Edwards

OREGON
 JULY 16, 1971
 G. DENNIS EDWARDS
 951

RENEWS 12/31/99

RECEIVED BY

Umatilla County Surveyor

Date 10-98

Rec'd By JK

No. 98-213-C