

# OREGON CORNER RESTORATION FORM

SECTION 27,26,35,34 TOWNSHIP 4 NORTH RANGE 29 EAST V-17  
 COUNTY : UMATILLA DATE 11/01

CORNER DESIGNATION

SECTION CORNER

- CONDITION REPORT ONLY
- NOT FOUND
- RENEWED
- UNCOVERED
- SURVEYED IN
- REFERENCED

PREVIOUS RENEWALS / SURVEYS, ETC.

ORIGINALLY SURVEYED IN 1861 BY DAVENPORT UNDER CONTRACT #101. HE SET A POST IN A MOUND OF EARTH AND A CHARRED STAKE.  
 IN 1998 EDWARDS SET A PK NAIL IN THE WEST EDGE OF A CONCRETE CANAL.

MONUMENTS AND ACCESSORIES FOUND: CONDITION AND SOURCE

AN ALUMINUM TAG #951 IN A POWER POLE LIES S 80°34'46" W, 17.62 FEET.  
 A 1" x 30" IRON PIPE WITH A 2 3/8" BRASS CAP MKD AS BELOW LIES S 88°42'44" W, 2.01 FEET.

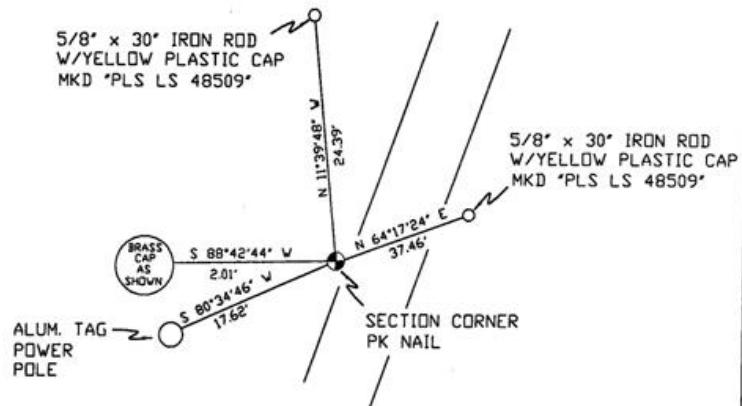
MONUMENT DETAIL



NAD 83/91  
 OREGON STATE PLANE  
 INTERNATIONAL FEET

777615.4549  
 8542942.0349

SKETCH



MONUMENT SET ( PROCEDURES AND DESCRIPTION )

NEW ACCESSORIES FROM WHICH

A 5/8" x 30" IRON ROD WITH A YELLOW PLASTIC CAP MKD "PLS LS 48509" LIES N 64°17'24" E, 37.46 FEET.  
 A 5/8" x 30" IRON ROD WITH A YELLOW PLASTIC CAP MKD "PLS LS 48509" LIES N 11°39'48" W, 24.39 FEET.

LOCATION AND COMMENTS

FROM INTERSECTION OF FEEDVILLE ROAD WITH LOOP ROAD GO SOUTH 1 MILE TO CORNER.

COMPASS DEC.

FIRM/AGENCY  
 PRIMM LAND SURVEYING  
 P.O. BOX 1322  
 HERMISTON, OREGON 97838

PARTY CHIEF  
 KEITH P. PRIMM

NOTES

WITNESS

BRIT L. PRIMM

RECEIVED BY

Umatilla County Surveyor

Date 12-01  
 Rec'd By KK

101-213-9

SURVEYOR'S SEAL

REGISTERED  
 PROFESSIONAL  
 LAND SURVEYOR

*Brit L. Primm*

OREGON  
 JULY 13, 1999  
 BRIT L. PRIMM  
 48509

EXPIRATION DATE: 12/31/02