

OREGON CORNER RESTORATION FORM

SECTION 27,34 TOWNSHIP 4 NORTH RANGE 29 EAST

V-15

COUNTY : UMATILLA DATE 11/01

CORNER DESIGNATION

1/4 CORNER

X CONDITION REPORT ONLY

- NOT FOUND
- RENEWED
- UNCOVERED
- SURVEYED IN
- REFERENCED

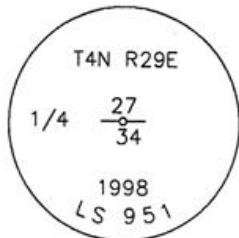
PREVIOUS RENEWALS / SURVEYS, ETC.

ORIGINALLY SURVEYED IN 1861 BY DAVENPORT UNDER CONTRACT #101. HE SET A POST IN A MOUND OF EARTH AND A CHARRED STAKE.
IN 1998 EDWARDS SET A 1" x 30" IRON PIPE WITH A 2 3/8" BRASS CAP BY SINGLE PROPORTION.

MONUMENTS AND ACCESSORIES FOUND: CONDITION AND SOURCE

AN ALUMINUM TAG #951 ON A BRACE POLE LIES N 44°16'21" E, 29.68 FEET.
AN ALUMINUM TAG #951 ON A POWER POLE LIES S 12°34'26" W, 82.44 FEET.
AN ALUMINUM TAG #951 ON A POWER POLE LIES N 37°35'14" W, 27.08 FEET.
A 1" x 30" IRON PIPE WITH A 2 3/8" BRASS CAP LIES N 89°55'09" W, 11.03 FEET.

MONUMENT DETAIL



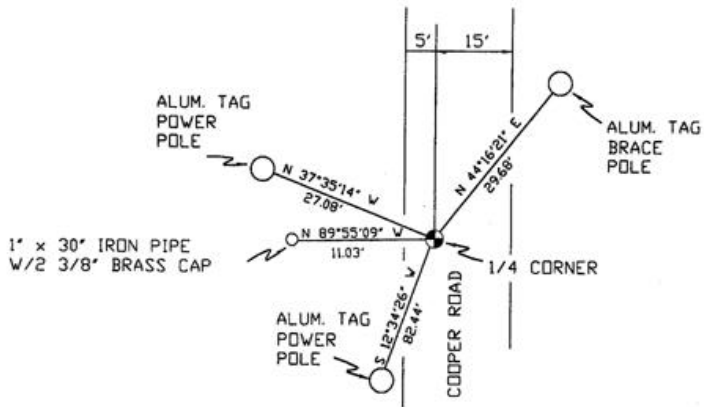
NAD 83/91
OREGON STATE PLANE
INTERNATIONAL FEET

777537.3753
8540299.1747



N.T.S

SKETCH



MONUMENT SET (PROCEDURES AND DESCRIPTION)

NEW ACCESSORIES FROM WHICH

LOCATION AND COMMENTS

FROM INTERSECTION OF FEEDVILLE ROAD WITH LOOP ROAD GO SOUTH 1 MILE AND WEST 1 MILE TO CORNER, FALLS IN COOPER ROAD.

COMPASS DEC.

FIRM/AGENCY
PRIMM LAND SURVEYING
P.O. BOX 1322
HERMISTON, OREGON 97838

PARTY CHIEF
KEITH P. PRIMM

NOTES

WITNESS
BRIT L. PRIMM

RECEIVED BY
Umatilla County Surveyor
Date 12-01
Rec'd By KK
No. 01-213-9

SURVEYOR'S SEAL

REGISTERED
PROFESSIONAL
LAND SURVEYOR

Brit L. Primm
OREGON
JULY 13, 1999
BRIT L. PRIMM
48509

EXPIRATION DATE:12/31/02